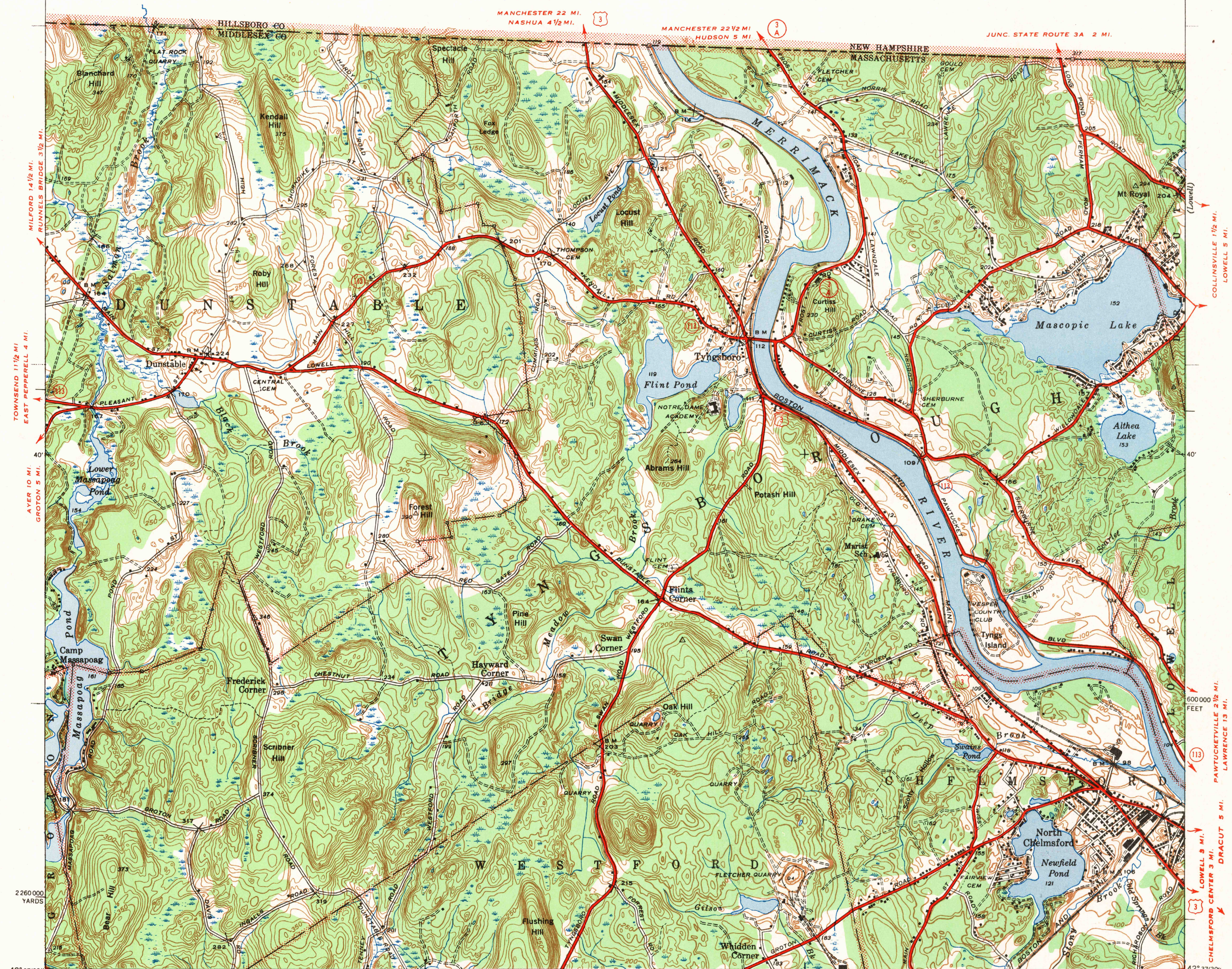


MASSACHUSETTS-NEW HAMPSHIRE
TYNGSBORO QUADRANGLE
7½-MINUTE SERIES

THIS AREA IS SHOWN ON THE MAP OF MANCHESTER 15 MINUTE
QUADRANGLE, SURVEYED IN 1931, SCALE 1:62500





ROUTES USUALLY TRAVELED

HARD IMPERVIOUS SURFACES _____

OTHER SURFACE IMPROVEMENTS _____

1940

 U.S. ROUTE

 STATE ROUTE

Class 6

Massachusetts
tem

U. S. BOARD ON
GEOGRAPHIC NAMES

MASS.-N. H.

722.575
Accession

1868-1868

Class

630-USGS

Massachusetts, 1943

Date

1943