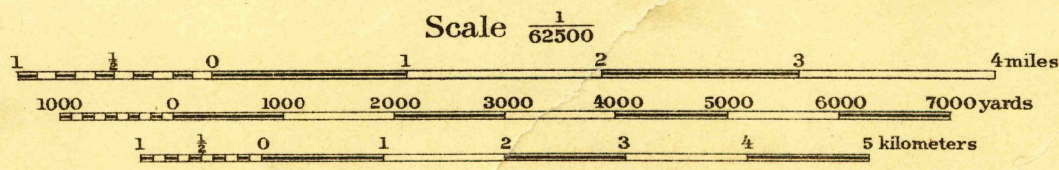


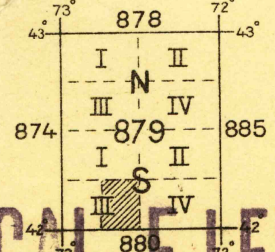
Field work and compilation under the direction of
Col. H. Taylor, Corps of Engineers, U.S.A.,
Department Engineer, Eastern Department,
Nov. 1915.
Field work under the immediate supervision of
Capt. W. H. Paine, 2nd Cavalry, U.S.A.,
2nd Lieut. F. R. Hunter, 2nd Cavalry, U.S.A.
Corrected under the direction of
Col. F. R. Shunk, C. of E., U.S.A.,
Dept. Engineer, Northeastern Dept.,
Jan. 1919.
Base map from U.S.G.S. engravings.
Corrections and additions by Department
Engineer, Eastern Department.



Contour Interval 20 feet
Datum is mean sea level

NOTE: OFFICERS USING THIS MAP WILL MARK HEREON CORRECTIONS AND ADDITIONS WHICH COME
TO THEIR ATTENTION AND MAIL DIRECT TO "THE CHIEF OF ENGINEERS, WASHINGTON, D.C."

Engineer Reproduction Plant, U.S. Army, Washington Barracks, D.C. 7230
1920



HISTORICAL FILES

(DO NOT REMOVE) COPY

RETURN TO CENTRAL FILE