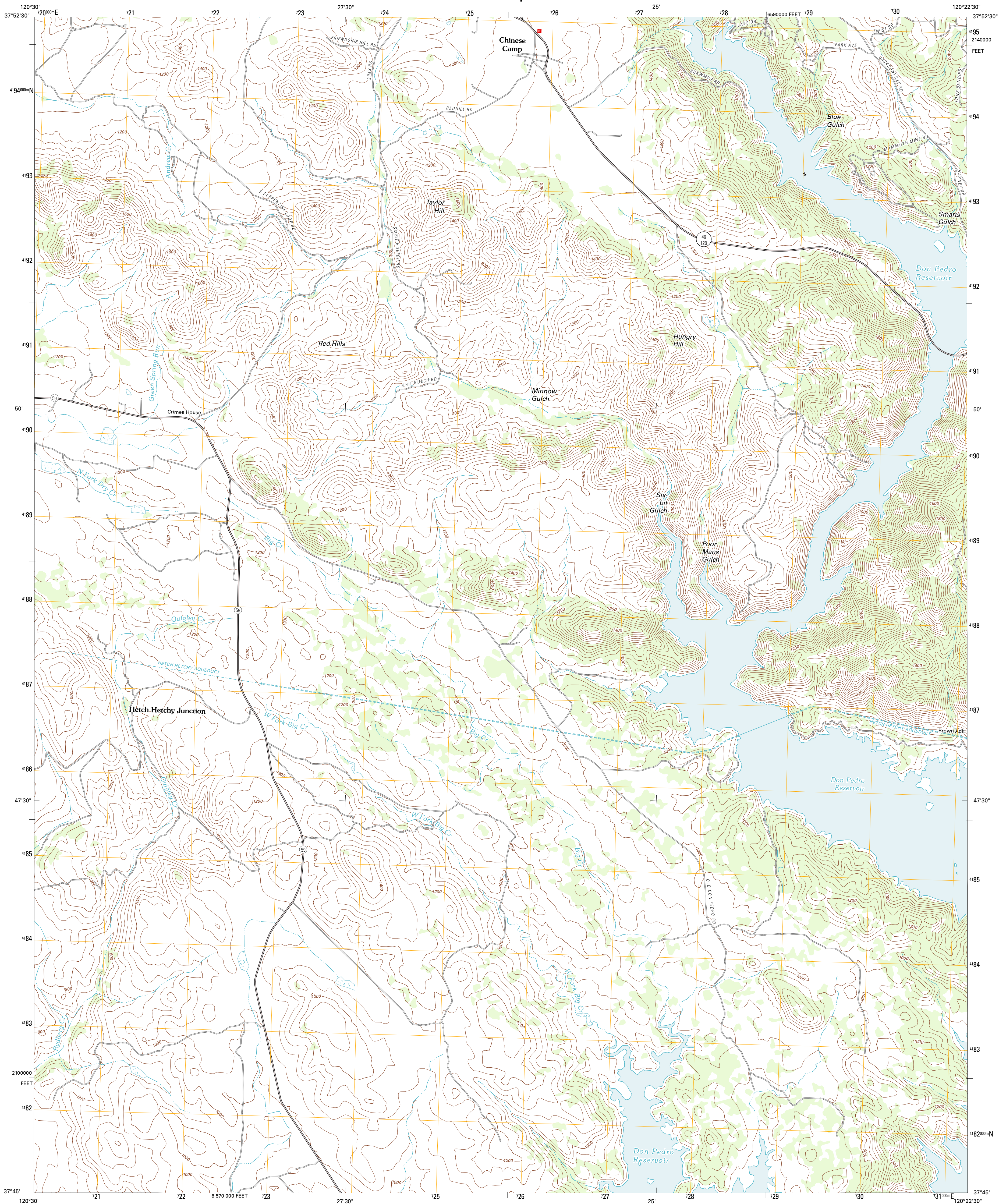




U.S. DEPARTMENT OF THE INTERIOR
U. S. GEOLOGICAL SURVEY

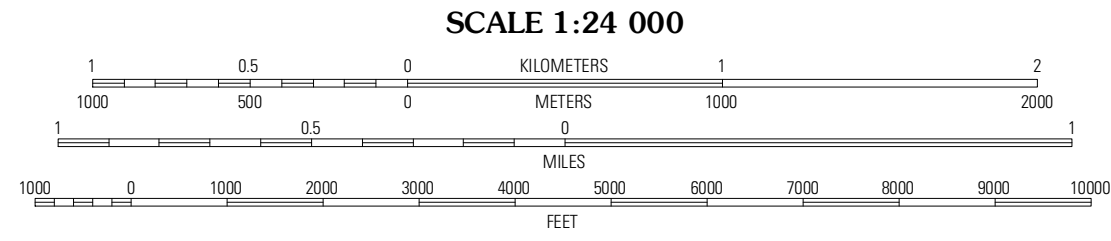
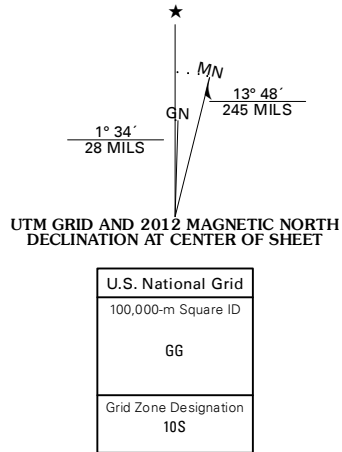


CHINESE CAMP QUADRANGLE
CALIFORNIA-TUOLUMNE CO.
7.5-MINUTE SERIES



Produced by the United States Geological Survey
North American Datum of 1983 (NAD83)
World Geodetic System of 1984 (WGS84). Projection and
1 000-meter grid. Universal Transverse Mercator, Zone 10S
10 000-foot ticks. California Coordinate System of 1983
(zone 3)

Imagery.....NAIP, June 2010 - August 2010
Roads.....©2006-2011 TomTom
Names.....GNIS, 2011
Hydrography.....National Hydrography Dataset, 2010
Contours.....National Elevation Dataset, 2001
Boundaries.....Census, IBWC, IBC, USGS, 1972 - 2010

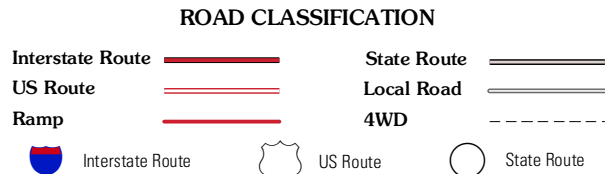


CONTOUR INTERVAL 40 FEET
NORTH AMERICAN VERTICAL DATUM OF 1988
This map was produced to conform with the
National Geospatial Program US Topo Product Standard, 2011.
A metadata file associated with this product is draft version 0.6.1



New Melones Dam	Sonoma	Standard
Keystone	Chinese Camp	Moccasin
Cooperstown	La Grange	Pinon Blanco Peak

ADJOINING 7.5' QUADRANGLES



CHINESE CAMP, CA
2012