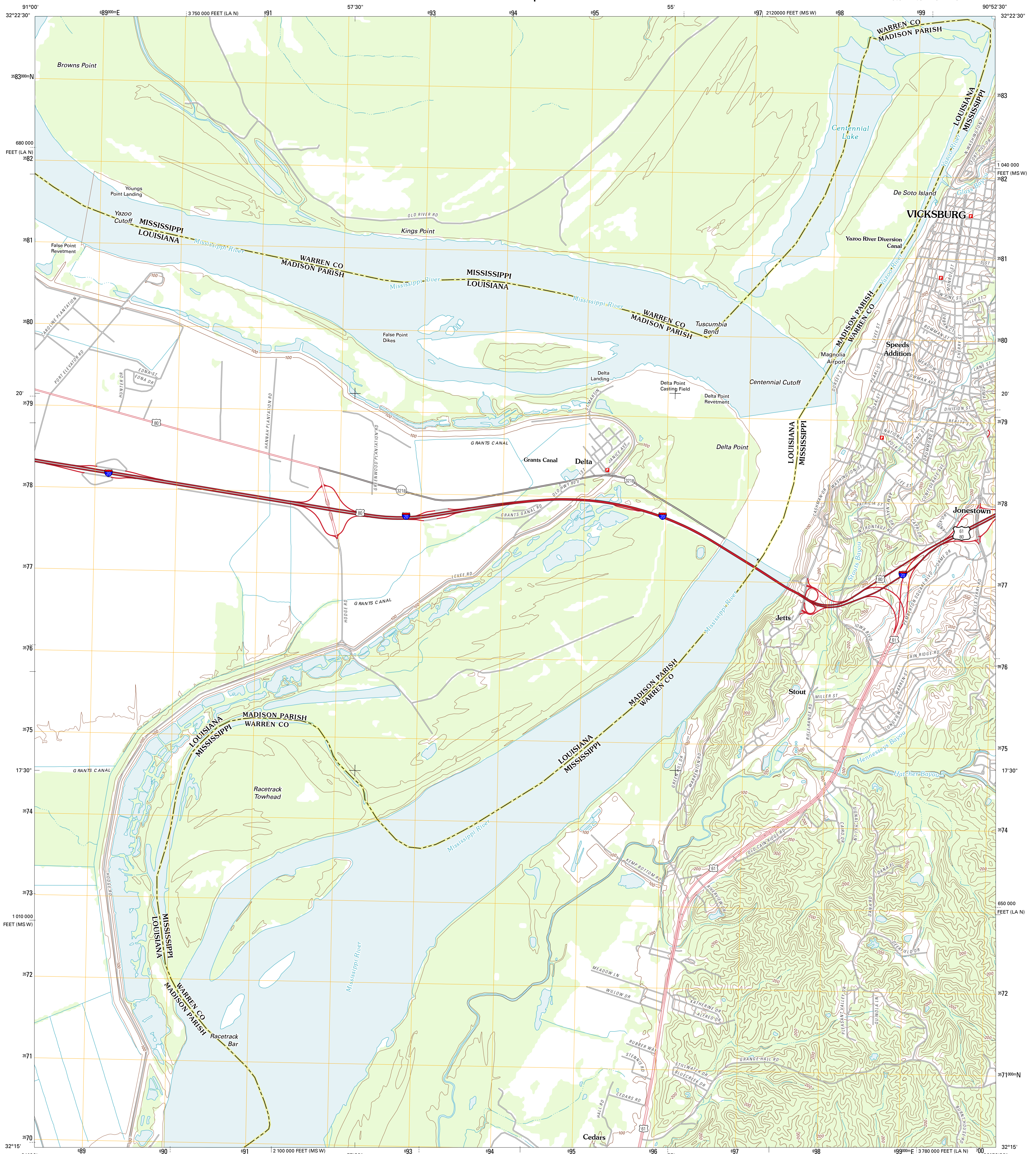




U.S. DEPARTMENT OF THE INTERIOR
U. S. GEOLOGICAL SURVEY



VICKSBURG WEST QUADRANGLE
MISSISSIPPI-LOUISIANA
7.5-MINUTE SERIES

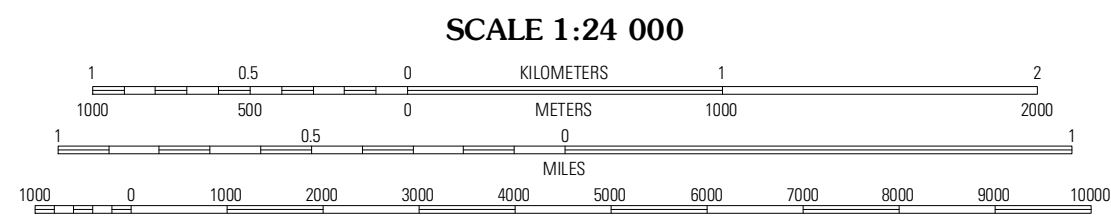


Produced by the United States Geological Survey
North American Datum of 1983 (NAD83)
World Geodetic System of 1984 (WGS84), Projection and
1 000-meter grid; Universal Transverse Mercator, Zone 15S
10 000-foot ticks; Mississippi Coordinate System of 1983
(west zone), Louisiana Coordinate System of 1983 (north
zone)

Imagery..... NAD, May 2010
Roads..... ©2006-2011, TomTom
Names..... GNIS, 2011
Hydrography..... National Hydrography Dataset, 2010
Contours..... National Elevation Dataset, 2008
Boundaries..... Census, IBWC, IBC, USGS, 1972 - 2010

UTM GRID AND 2012 MAGNETIC NORTH
DECLINATION AT CENTER OF SHEET

U.S. National Grid
100,000-m Square ID
10
XR YR
Grid Zone Designation
15S



CONTOUR INTERVAL 20 FEET
NORTH AMERICAN VERTICAL DATUM OF 1988
This map was produced to conform with the
National Geospatial Program US Topo Product Standard, 2011.
A metadata file associated with this product is draft version 0.6.2



Ashby	Long Lake	Redwood
Mound	Vicksburg West	Vicksburg East
Bedford	Vickena	Big Black

ADJOINING 7.5 QUADRANGLES

ROAD CLASSIFICATION
Interstate Route
US Route
Ramp
State Route
Local Road
4WD

VICKSBURG WEST, MS-LA
2012