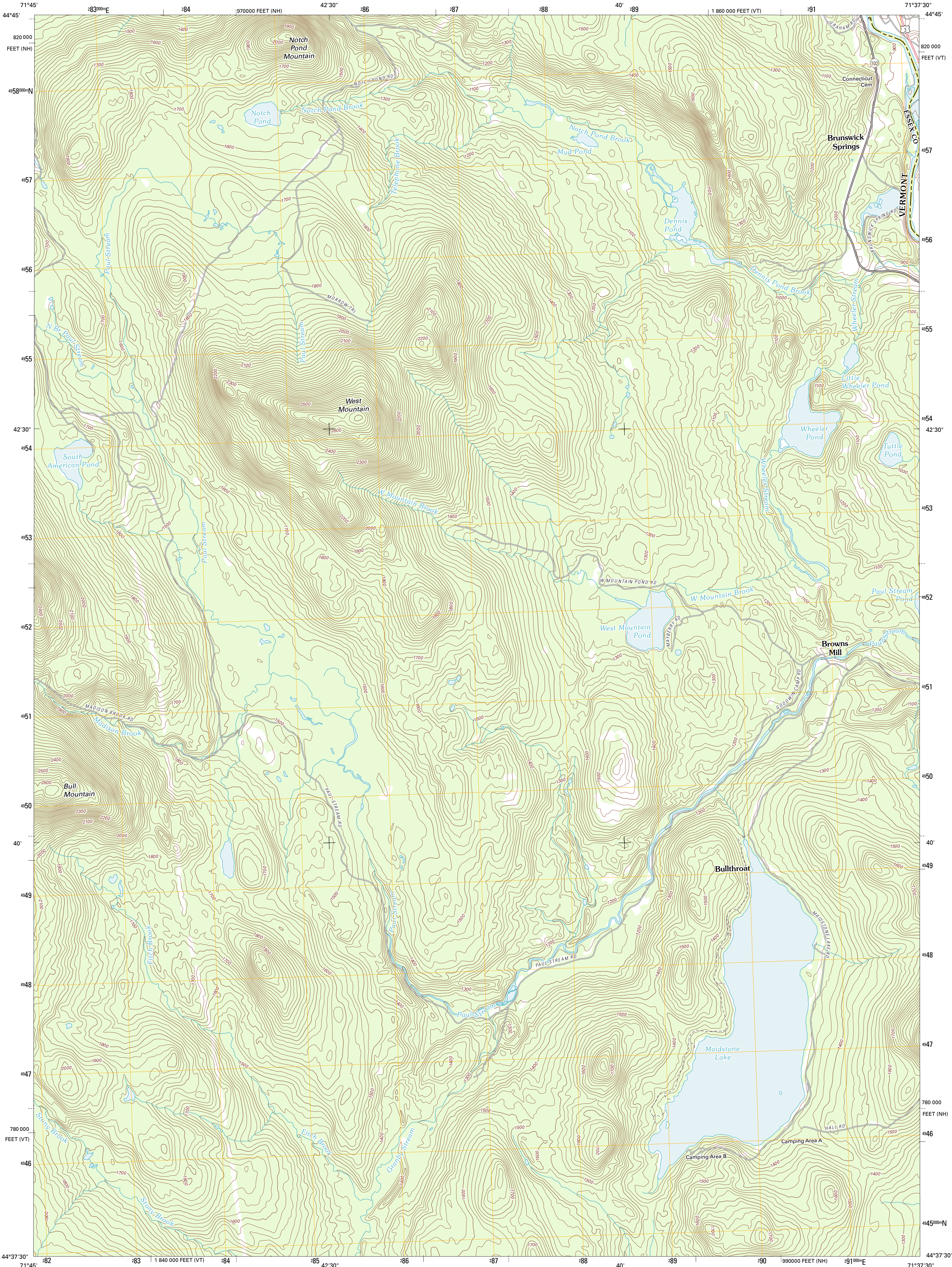




U.S. DEPARTMENT OF THE INTERIOR
U. S. GEOLOGICAL SURVEY

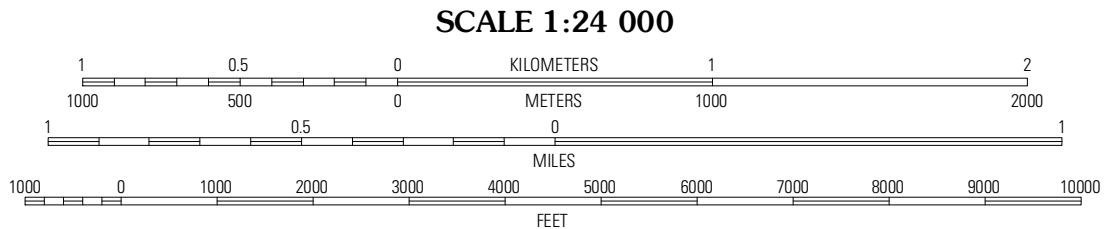
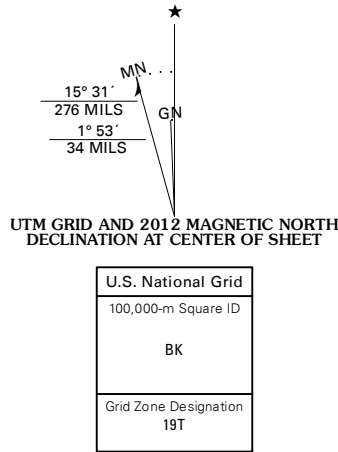


MAIDSTONE LAKE QUADRANGLE
VERMONT-NEW HAMPSHIRE
7.5-MINUTE SERIES



Produced by the United States Geological Survey
North American Datum of 1983 (NAD83)
World Geodetic System of 1984 (WGS84). Projection and
1 000-meter grid: Universal Transverse Mercator, Zone 19T
10 000-foot ticks: Vermont Coordinate System of 1983, New
Hampshire Coordinate System of 1983

Imagery.....NAP, September 2011
Roads.....©2006-2011 TomTom
Names.....GNIS, 2011
Hydrography.....National Hydrography Dataset, 2011
Contours.....National Elevation Dataset, 2011
Boundaries.....Census, IBWC, IBC, USGS, 1972 - 2010



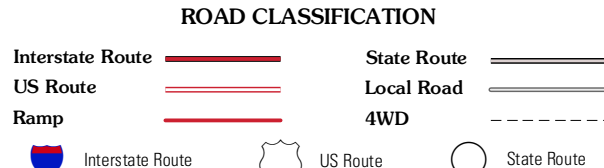
CONTOUR INTERVAL 20 FEET
NORTH AMERICAN VERTICAL DATUM OF 1988
This map was produced to conform with the
National Geospatial Program US Topo Product Standard, 2011.
A metadata file associated with this product is draft version 0.6.2



QUADRANGLE LOCATION

Spectacle Pond	Bloomfield	Tinkerville
Seneca Mountain	Maidstone Lake	Stratford
Gallup Mills	Stone Mountain	Groveton

ADJOINING 7.5' QUADRANGLES



MAIDSTONE LAKE, VT-NH
2012