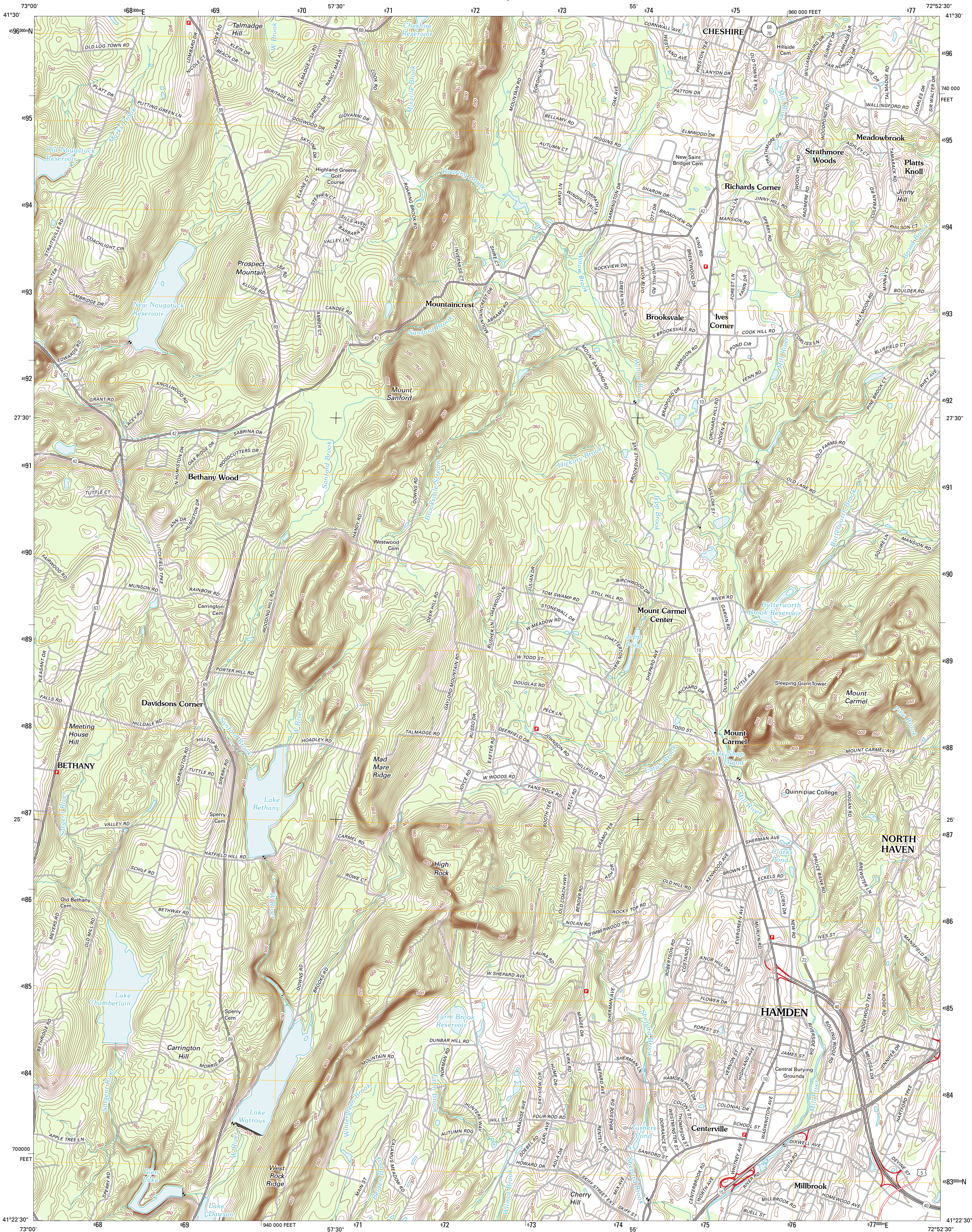




U.S. DEPARTMENT OF THE INTERIOR
U. S. GEOLOGICAL SURVEY

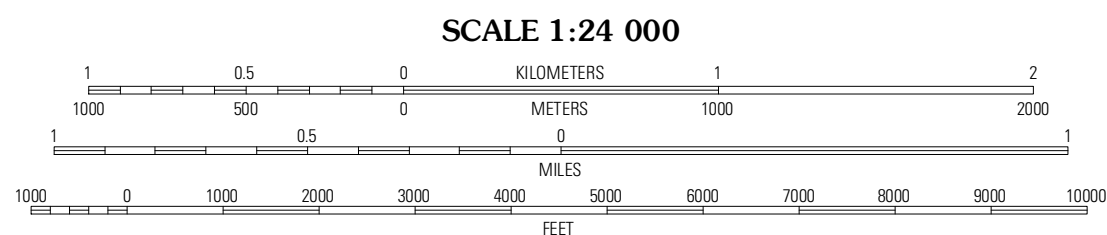
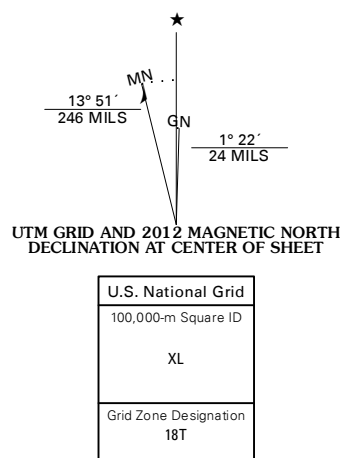


MOUNT CARMEL QUADRANGLE
CONNECTICUT-NEW HAVEN CO.
7.5-MINUTE SERIES

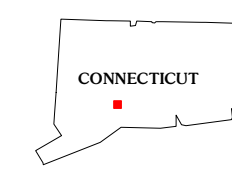


Produced by the United States Geological Survey
North American Datum of 1983 (NAD83)
World Geodetic System of 1984 (WGS84). Projection and
1 000-meter grid: Universal Transverse Mercator, Zone 18T
10 000-foot ticks: Connecticut Coordinate System of 1983

Imagery.....NAIP, August 2010
Names.....©2006-2011 TomTom
Hydrography.....National Hydrography Dataset, 2010
Contours.....National Elevation Dataset, 2012
Boundaries.....Census, IBWC, IBC, USGS, 1972 - 2010



CONTOUR INTERVAL 10 FEET
NORTH AMERICAN VERTICAL DATUM OF 1988
This map was produced to conform with the
National Geospatial Program US Topo Product Standard, 2011.
A metadata file associated with this product is draft version 0.6.2



Waterbury	Southington	Meriden
Naugatuck	Mount Carmel	Wallingford
Ansonia	New Haven	Brantford

ROAD CLASSIFICATION		
Interstate Route	State Route	Local Road
US Route	US Route	4WD
Ramp	Interstate Route	US Route

MOUNT CARMEL, CT
2012