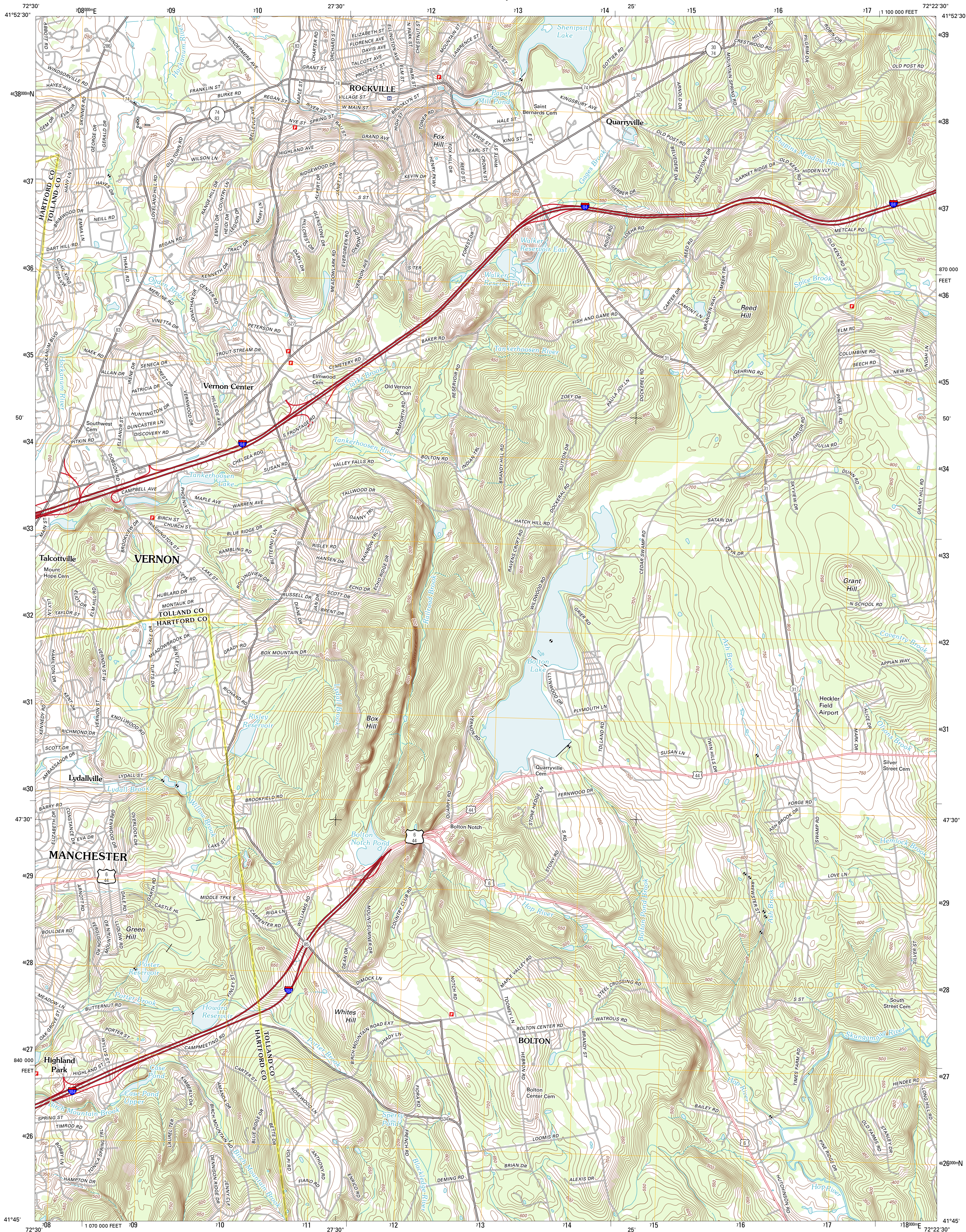




U.S. DEPARTMENT OF THE INTERIOR  
U. S. GEOLOGICAL SURVEY

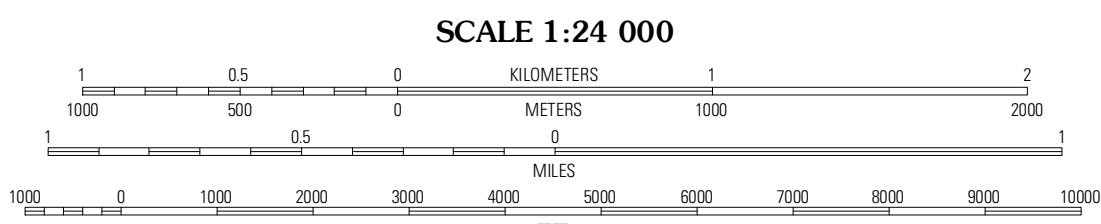
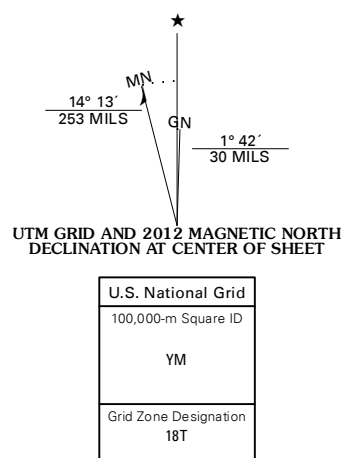


ROCKVILLE QUADRANGLE  
CONNECTICUT  
7.5-MINUTE SERIES

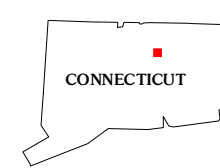


Produced by the United States Geological Survey  
North American Datum of 1983 (NAD83)  
World Geodetic System of 1984 (WGS84). Projection and  
1 000-meter grid: Universal Transverse Mercator, Zone 18T  
10 000-foot ticks: Connecticut Coordinate System of 1983

Imagery:.....NAIP, August 2010  
Roads:.....©2006-2011 TomTom  
Names:.....GNS, 2011  
Hydrography:.....National Hydrography Dataset, 2010  
Contours:.....National Elevation Dataset, 2012  
Boundaries:.....Census, IBWC, IBC, USGS, 1972 - 2010



CONTOUR INTERVAL 10 FEET  
NORTH AMERICAN VERTICAL DATUM OF 1988  
This map was produced to conform with the  
National Geospatial Program US Topo Product Standard, 2011.  
A metadata file associated with this product is draft version 0.6.2



Broad Brook	Ellington	Stafford Springs
Manchester	Rockville	Coventry
Glastonbury	Middletown	Columbia

ROAD CLASSIFICATION			
Interstate Route	State Route	Local Road	4WD
US Route	US Route	State Route	

ROCKVILLE, CT  
2012