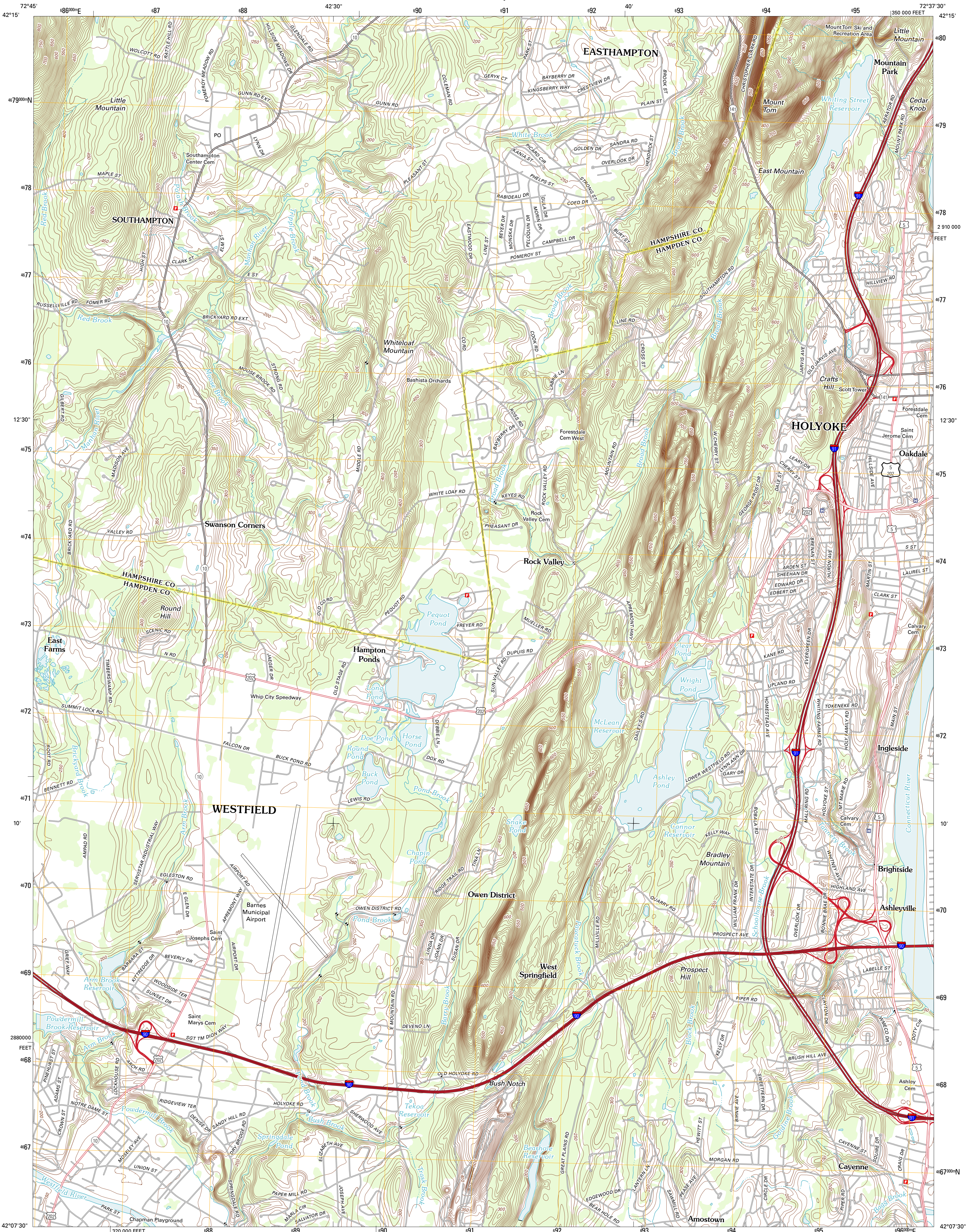




U.S. DEPARTMENT OF THE INTERIOR
U. S. GEOLOGICAL SURVEY

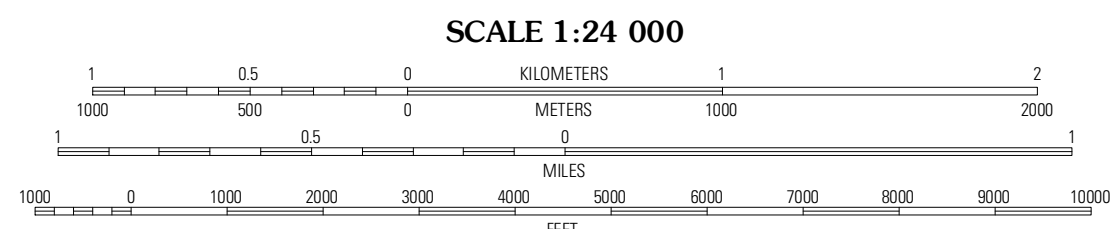
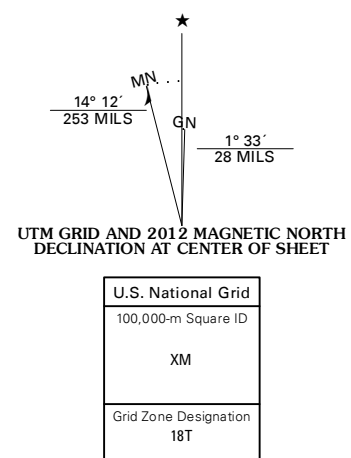


MOUNT TOM QUADRANGLE
MASSACHUSETTS
7.5-MINUTE SERIES



Produced by the United States Geological Survey
North American Datum of 1983 (NAD83)
World Geodetic System of 1984 (WGS84). Projection and
1 000-meter grid: Universal Transverse Mercator, Zone 18T
10 000-foot ticks: Massachusetts Coordinate System of 1983
(mainland zone)

Imagery.....NAIP, August 2010
Roads.....©2006-2011, TomTom
Names.....GNSS, 2011
Hydrography.....National Hydrography Dataset, 2010
Contours.....National Elevation Dataset, 2012
Boundaries.....Census, IBWC, IBC, USGS, 1972 - 2010



CONTOUR INTERVAL 10 FEET
NORTH AMERICAN VERTICAL DATUM OF 1988
This map was produced to conform with the
National Geospatial Program US Topo Product Standard, 2011.
A metadata file associated with this product is draft version 0.6.2



| | | |
|-------------|------------------|-------------------|
| Westhampton | Easthampton | Mount Holyoke |
| Woronocho | Mount Tom | Springfield North |
| Southwick | West Springfield | Springfield South |

| ROAD CLASSIFICATION | |
|---------------------|-------------|
| Interstate Route | State Route |
| US Route | Local Road |
| Ramp | 4WD |
| Interstate Route | US Route |
| | State Route |

MOUNT TOM, MA
2012