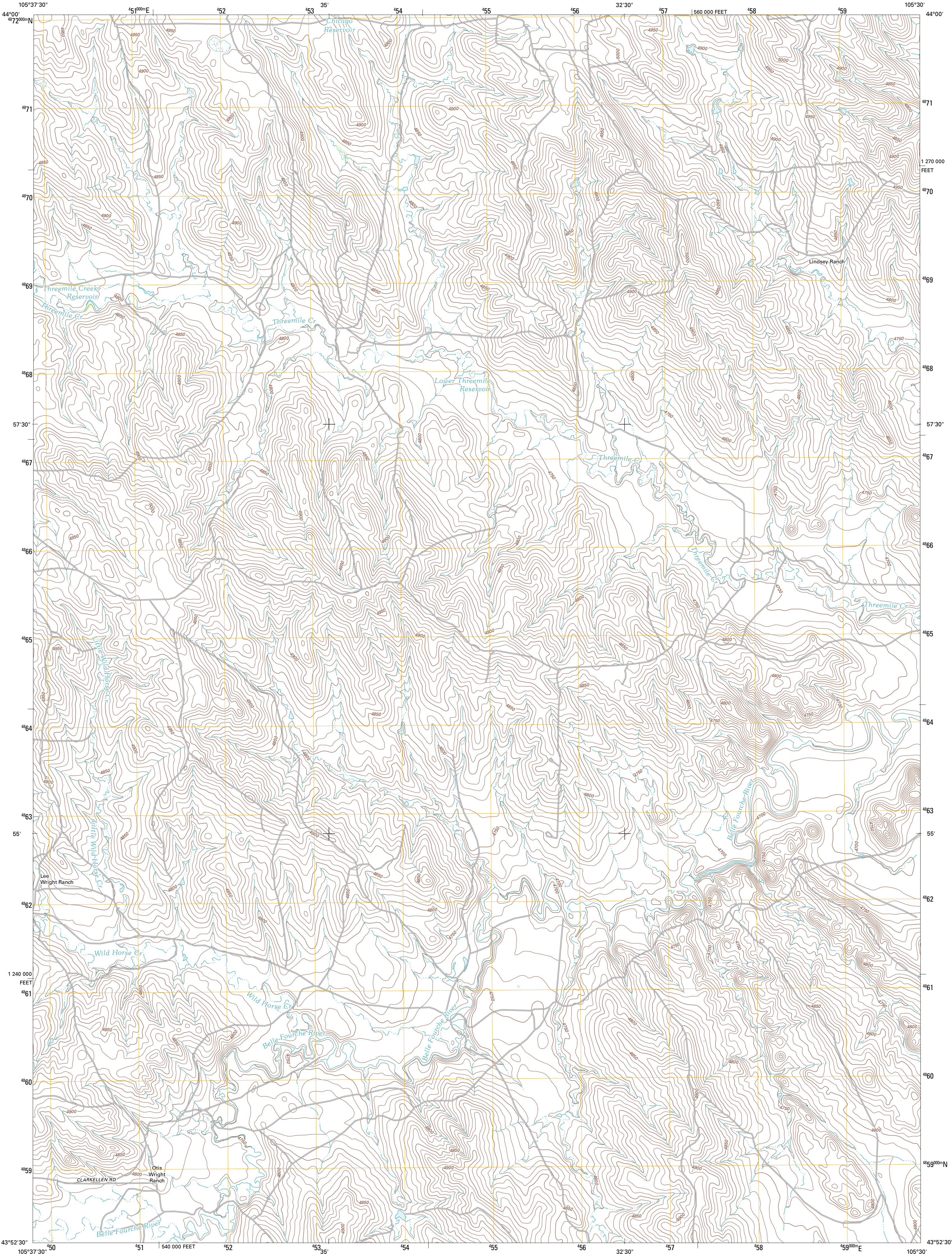




U.S. DEPARTMENT OF THE INTERIOR
U. S. GEOLOGICAL SURVEY

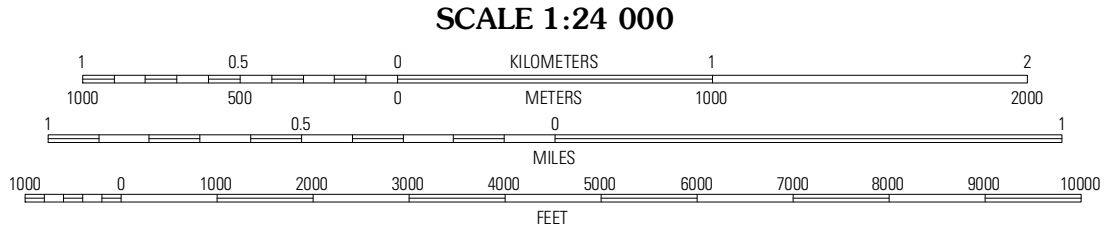
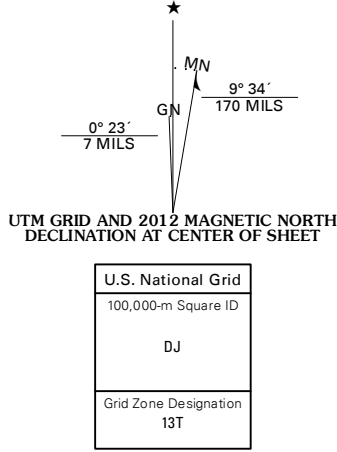


THREEMILE CREEK RESERVOIR QUADRANGLE
WYOMING-CAMPBELL CO.
7.5-MINUTE SERIES

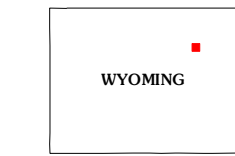


Produced by the United States Geological Survey
North American Datum of 1983 (NAD83)
World Geodetic System of 1984 (WGS84). Projection and
1 000-meter grid: Universal Transverse Mercator, Zone 13T
10 000-foot ticks: Wyoming Coordinate System of 1983 (east zone)

Imagery.....NAIP, August 2009
Roads.....©2006-2011 TomTom
Names.....GNIS, 2011
Hydrography.....National Hydrography Dataset, 2009
Contours.....National Elevation Dataset, 2005
Boundaries.....Census, IBVC, USGS, 1972 - 2010
Public Land Survey System.....BLM, 2006 - 2008



CONTOUR INTERVAL 10 FEET
NORTH AMERICAN VERTICAL DATUM OF 1988
This map was produced to conform with the
National Geospatial Program US Topo Product Standard, 2011.
A metadata file associated with this product is draft version 0.6.3



Pleasantdale	Scaper Reservoir	The Gap SW
Person Draw	Threemile Creek Reservoir	Eagle Rock
Greenwood Reservoir	Rocky Butte Gulch	Reno Junction

ROAD CLASSIFICATION			
Interstate Route	State Route	Local Road	4WD
US Route			
Ramp			
Interstate Route	US Route	State Route	

THREEMILE CREEK RESERVOIR, WY
2012