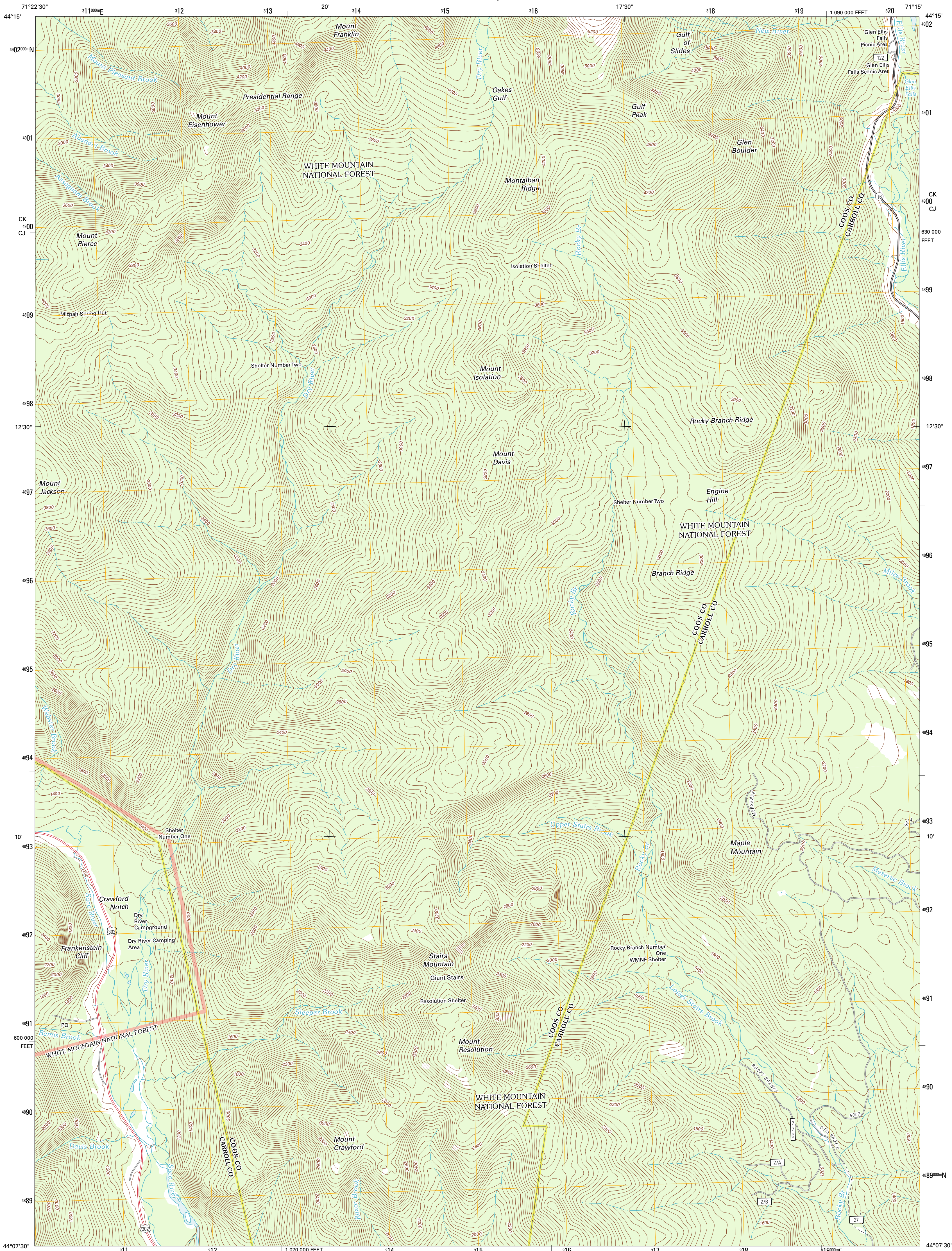




U.S. DEPARTMENT OF THE INTERIOR
U. S. GEOLOGICAL SURVEY

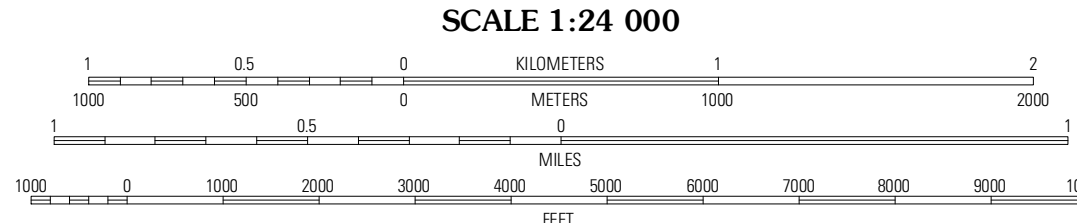
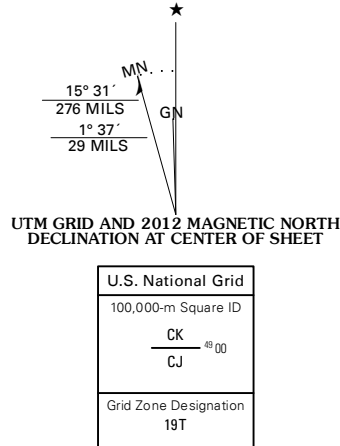


STAIRS MOUNTAIN QUADRANGLE
NEW HAMPSHIRE
7.5-MINUTE SERIES



Produced by the United States Geological Survey
North American Datum of 1983 (NAD83)
World Geodetic System of 1984 (WGS84). Projection and
1 000-meter grid. Universal Transverse Mercator, Zone 19T
10 000-foot ticks: New Hampshire Coordinate System of
1983

Imagery.....NAIP, September 2011
Roads.....©2006-2011 TomTom
Roads within US Forest Service Lands.....FS Topo Data
with limited Forest Service updates, 2009
Names.....GNIS, 2011
Hydrography.....National Hydrography Dataset, 2011
Contours.....National Elevation Dataset, 2001
Boundaries.....Census, IBWC, IBC, USGS, 1972 - 2010



CONTOUR INTERVAL 40 FEET
NORTH AMERICAN VERTICAL DATUM OF 1988
This map was produced to conform with the
National Geospatial Program US Topo Product Standard, 2011.
A metadata file associated with this product is draft version 0.6.2



QUADRANGLE LOCATION		
Mount Dartmouth	Mount Washington	Carter Dome
Crawford Notch	Stairs Mountain	Jackson
Mount Carraigan	Bartlett	North Conway West

ROAD CLASSIFICATION		
Interstate Route	State Route	Local Road
US Route	AWD	
Ramp		
Interstate Route	US Route	State Route
FS Primary Route	FS Passenger Route	FS High Clearance Route

Check with local Forest Service unit
for current travel conditions and restrictions.

STAIRS MOUNTAIN, NH
2012