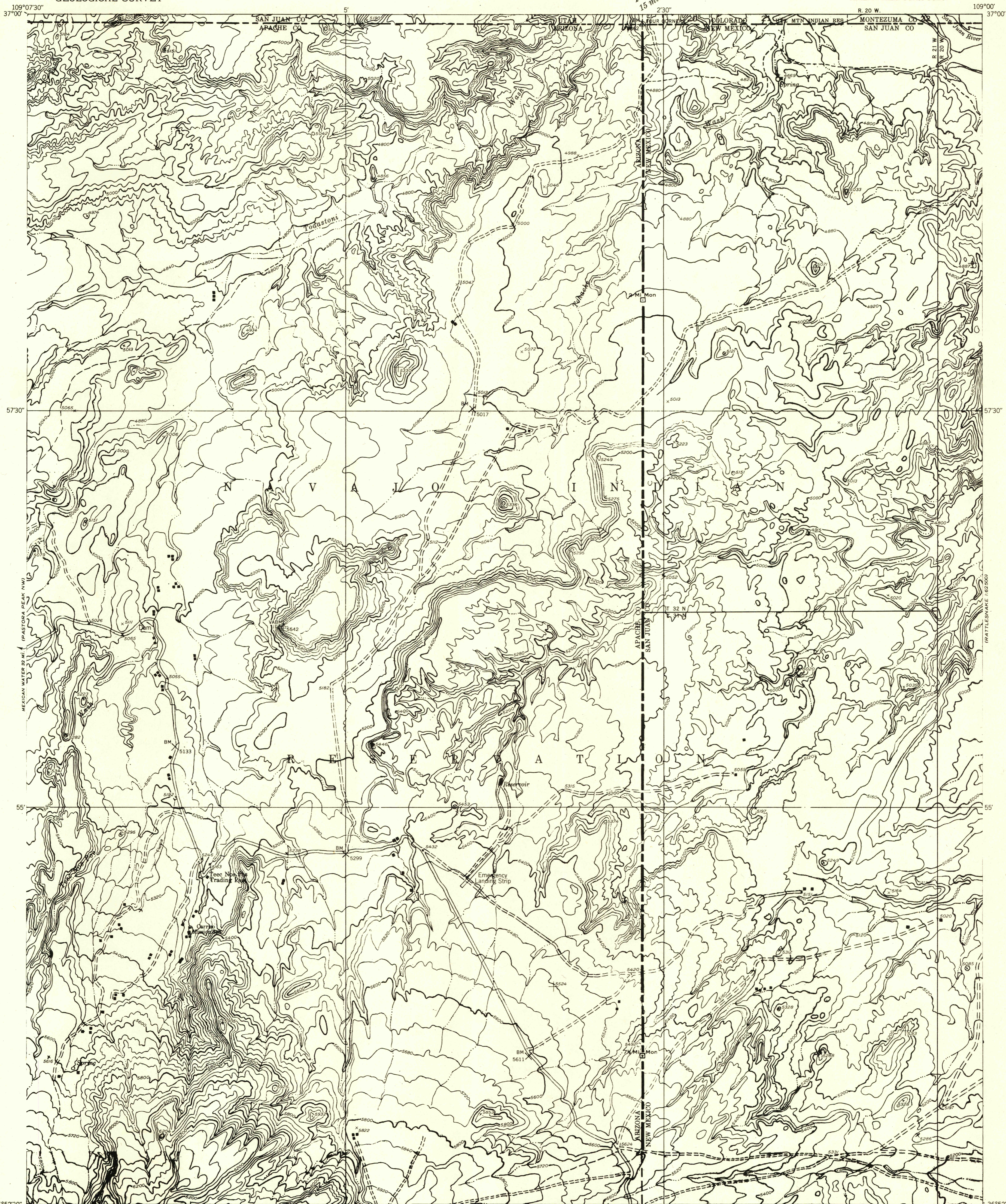


DEPARTMENT OF THE INTERIOR
GEOLOGICAL SURVEY

Preliminary edition
Pending completion of 1:62,500 scale
15 minute maps covering this area

FILE COPY
Inspection and Editing

PASTORA PEAK NE QUADRANGLE
ARIZ.-N. MEX.-UTAH-COLO.



Mapped by the Geological Survey 1953
Topography by multiplex methods from
aerial photographs taken 1950

TRUE NORTH
MAGNETIC NORTH
APPROXIMATE MEAN
DECLINATION, 1953

SCALE 1:24,000
1 0 1000 2000 3000 4000 5000 6000 7000 FEET
1 MILE

CONTOUR INTERVAL 40 FEET
DATUM IS MEAN SEA LEVEL

INTERIOR—GEOLOGICAL SURVEY WASHINGTON, D. C. 20541

USGS
Historical File
Topographic Division

ROAD CLASSIFICATION

Unimproved

PASTORA PEAK NE, ARIZ.-N. MEX.-UTAH-COLO.
N3652.5-W10900.7.5

JUN 23 1954