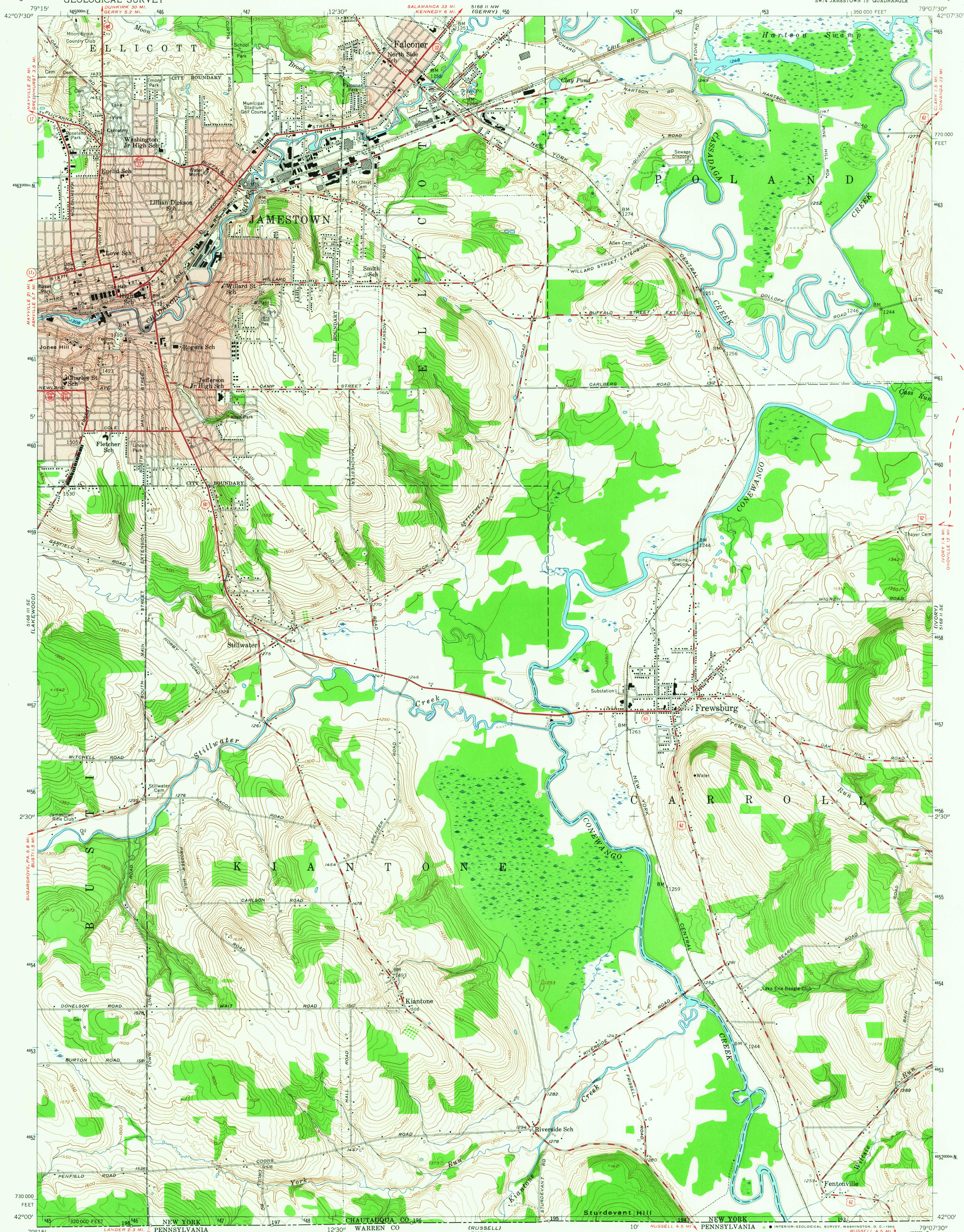


UNITED STATES  
DEPARTMENT OF THE INTERIOR  
GEOLOGICAL SURVEY

JAMESTOWN QUADRANGLE  
NEW YORK—CHAUTAUQUA CO.  
7.5 MINUTE SERIES (TOPOGRAPHIC)  
SW 1/4 JAMESTOWN 15' QUADRANGLE



Mapped, edited, and published by the Geological Survey

Control by USGS and USC&GS

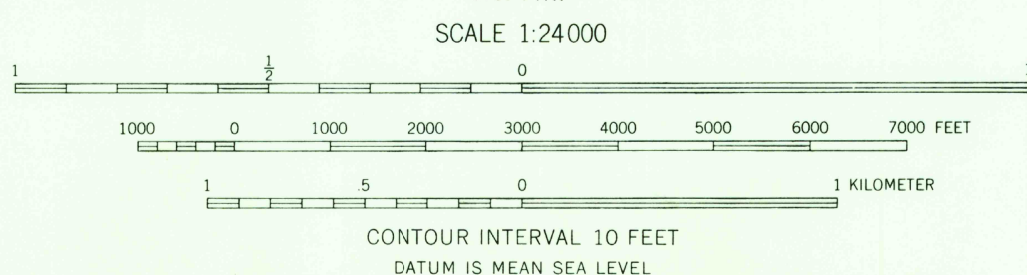
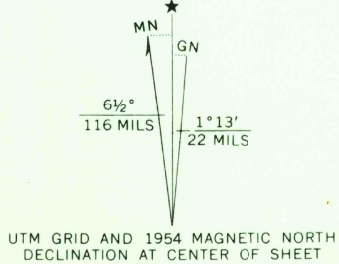
Topography from aerial photographs by photogrammetric methods. Aerial photographs taken 1953. Field check 1954

Polyconic projection. 1927 North American datum  
10,000-foot grid based on New York coordinate system,  
west zone

Red tint indicates areas in which only  
landmark buildings are shown

Unchecked elevations are shown in brown

1000-meter Universal Transverse Mercator grid ticks,  
zone 17, shown in blue



THIS MAP COMPLIES WITH NATIONAL MAP ACCURACY STANDARDS  
FOR SALE BY U.S. GEOLOGICAL SURVEY, WASHINGTON, D. C. 20242  
A FOLDER DESCRIBING TOPOGRAPHIC MAPS AND SYMBOLS IS AVAILABLE ON REQUEST

USGS  
Historical File  
Topographic Division



ROAD CLASSIFICATION  
Heavy-duty ——— Light-duty ———  
Medium-duty ——— Unimproved dirt ———  
U.S. Route ——— State Route ———

U.S.G.S.  
FILE COPY  
TOPOGRAPHIC DIVISION

JAMESTOWN, N. Y.  
SW 1/4 JAMESTOWN 15' QUADRANGLE  
N 4200—W 7907.5/7.5

1954

AMS 5168 II SW—SERIES V821

SEP 28 1965

3167