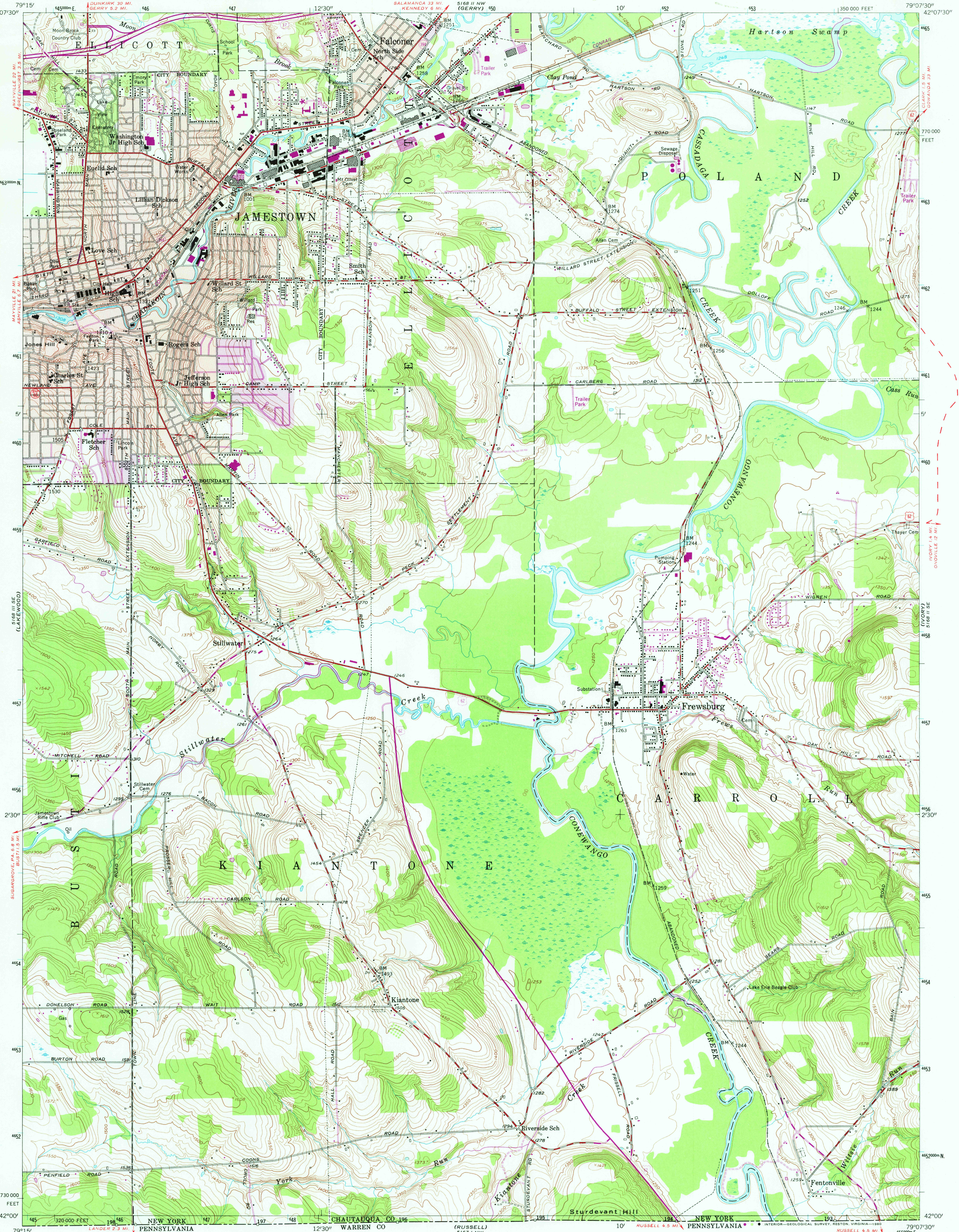


UNITED STATES
DEPARTMENT OF THE INTERIOR
GEOLOGICAL SURVEY



JAMESTOWN QUADRANGLE
NEW YORK—CHAUTAUQUA CO.
7.5 MINUTE SERIES (TOPOGRAPHIC)



Mapped, edited, and published by the Geological Survey

Control by USGS and USC&GS

Topography from aerial photographs by photogrammetric methods. Aerial photographs taken 1953. Field check 1954

Polyconic projection. 1927 North American datum

10,000-foot grid based on New York coordinate system, west zone

Red tint indicates areas in which only landmark buildings are shown

Unchecked elevations are shown in brown

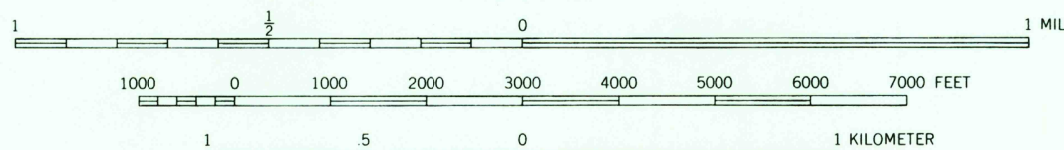
1000-meter Universal Transverse Mercator grid ticks, zone 17, shown in blue

Purple tint indicates extension of urban areas

Revisions shown in purple and woodland compiled from aerial photographs taken 1976 and other source data
This information not field checked. Map edited 1979

THIS MAP COMPLIES WITH NATIONAL MAP ACCURACY STANDARDS
FOR SALE BY U.S. GEOLOGICAL SURVEY, RESTON VIRGINIA 22092
A FOLDER DESCRIBING TOPOGRAPHIC MAPS AND SYMBOLS IS AVAILABLE ON REQUEST

SCALE 1:24,000



CONTOUR INTERVAL 10 FEET
NATIONAL GEODETIC VERTICAL DATUM OF 1929



USGS
Historical File
Topographic Division

JAMESTOWN, N. Y.
N4200—W7905.7/5

1954
PHOTOREVISED 1979
AMS 5168 II SW—SERIES V821

APR 18 1980

1500