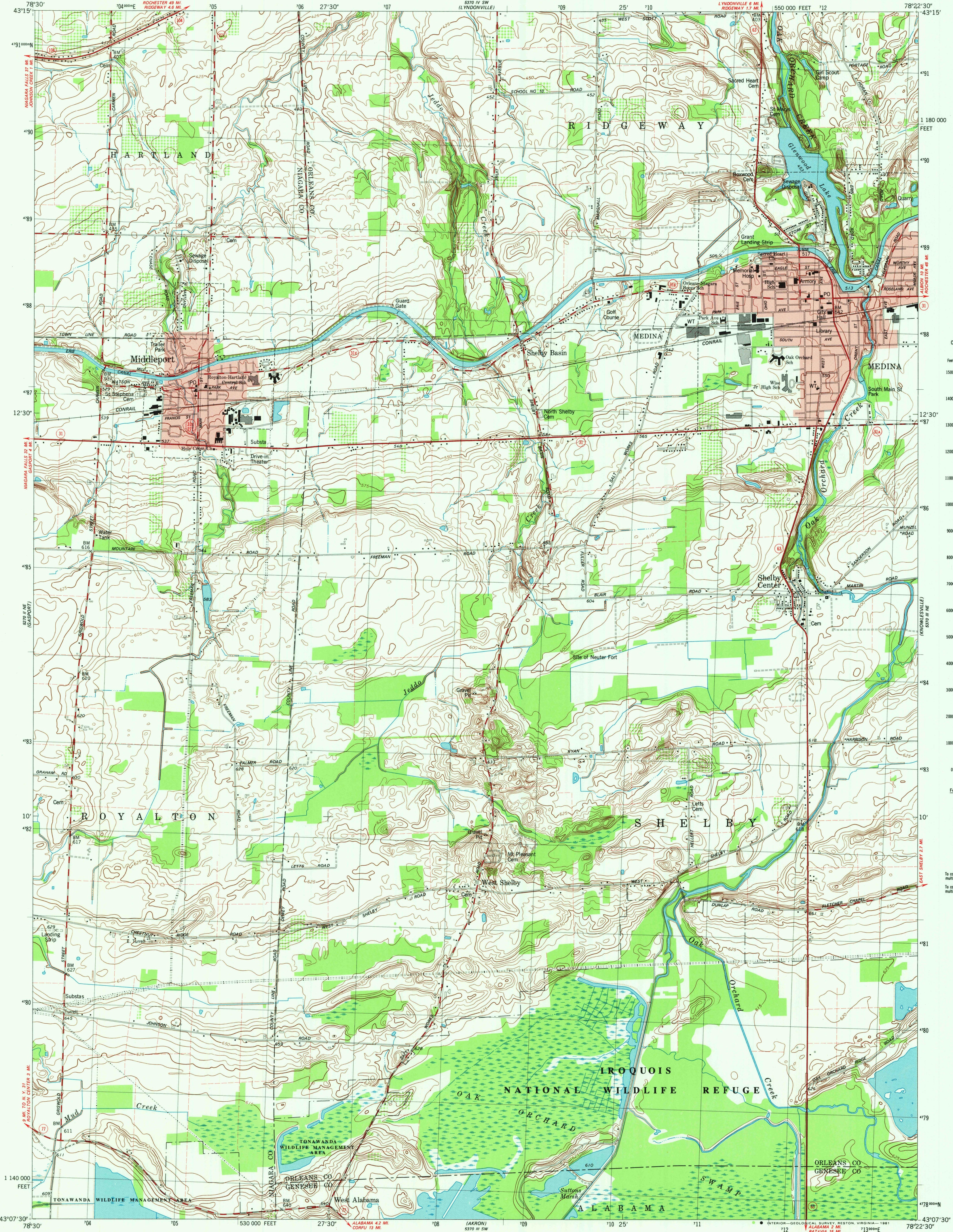


UNITED STATES
DEPARTMENT OF THE INTERIOR
GEOLOGICAL SURVEY

STATE OF NEW YORK
DEPARTMENT OF TRANSPORTATION

MEDINA QUADRANGLE
NEW YORK
7.5 MINUTE SERIES (TOPOGRAPHIC)
NW/4 MEDINA 15' QUADRANGLE



CONVERSION SCALES

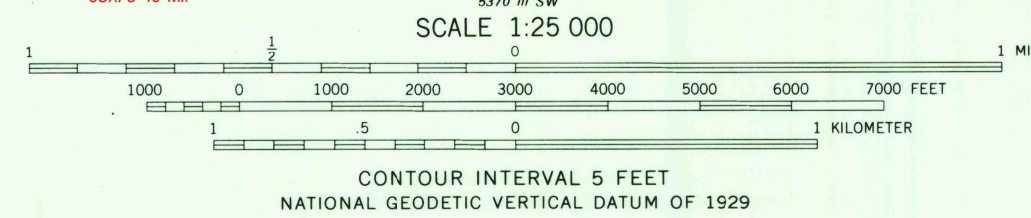
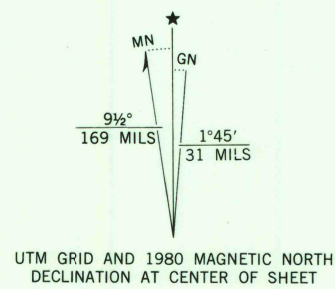
Feet	Meters
15000	4500
14000	4000
13000	3500
12000	3000
11000	2500
10000	2000
9000	1500
8000	1000
7000	700
6000	500
5000	300
4000	200
3000	100
2000	50
1000	25
500	12.5
250	6.25
100	2.5
50	1.25
0	0

Feet Meters

1	3048
2	6096
3	9144
4	12192
5	15240
6	18288
7	21336
8	24384
9	27432
10	30480

To convert feet to meters multiply by 3048
To convert meters to feet multiply by 3.2808

Mapped, edited, and published by the Geological Survey
Control by USGS and NOS/NOAA
Topography by photogrammetric methods from aerial photographs taken 1972. Field checked 1973. Map edited 1980
Projection and 10,000-foot grid ticks: New York coordinate system, west zone (transverse Mercator)
1000-meter Universal Transverse Mercator grid, zone 17
1927 North American Datum
To place on the predicted North American Datum 1983 move the projection lines 2 meters south and 21 meters west as shown by dashed corner ticks
Fine red dashed lines indicate selected fence and field lines where generally visible on aerial photographs. This information is unchecked
Red tint indicates areas in which only landmark buildings are shown
There may be private inholdings within the boundaries of the National or State reservations shown on this map



ROAD CLASSIFICATION

Primary highway, hard surface	Light-duty road, hard or improved surface
Secondary highway, hard surface	Unimproved road
Interstate Route	U. S. Route
	State Route



MEDINA, N. Y.
NW/4 MEDINA 15' QUADRANGLE
N4307.5-W7822.5/7.5
1980
DMA 5370 III NW-SERIES 7821

Oct. 20, 1981

22 30