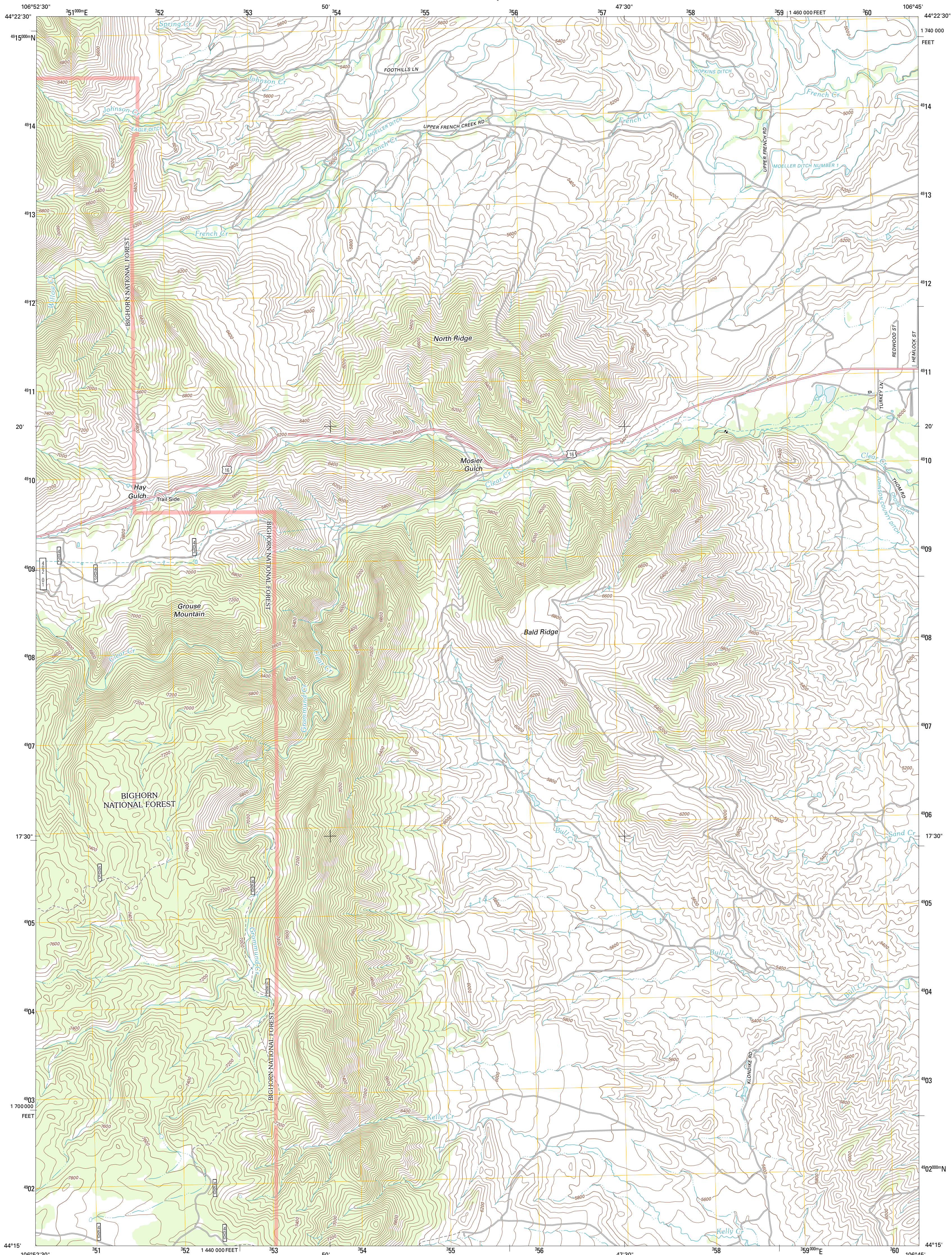




U.S. DEPARTMENT OF THE INTERIOR
U. S. GEOLOGICAL SURVEY

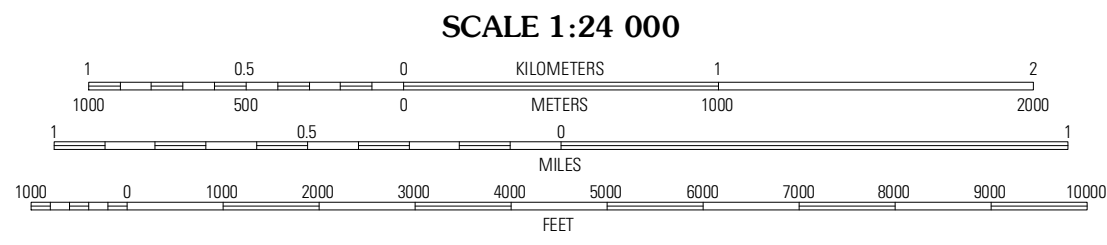
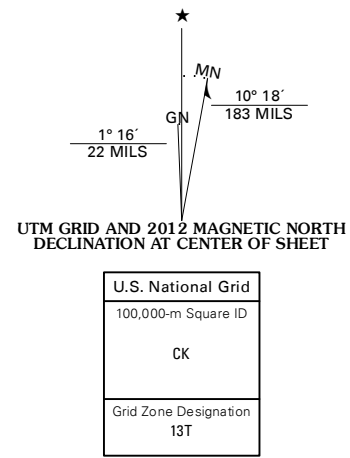


NORTH RIDGE QUADRANGLE
WYOMING-JOHNSON CO.
7.5-MINUTE SERIES

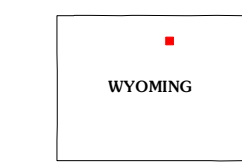


Produced by the United States Geological Survey
North American Datum of 1983 (NAD83)
World Geodetic System of 1984 (WGS84). Projection and
1 000-meter grid: Universal Transverse Mercator, Zone 13T
10 000-foot ticks: Wyoming Coordinate System of 1983 (east
central zone)

Imagery.....NAIP, August 2009
Roads.....©2006-2011 TomTom
Roads within US Forest Service Lands.....FS Topo Data
with limited Forest Service updates, 2009
Names.....©2006-2011 TomTom
Hydrography.....National Hydrography Dataset, 2009
Contours.....National Elevation Dataset, 2004
Boundaries.....Census, IBWC, IBC, USGS, 1972 - 2010
Public Land Survey System.....BLM, 2006 - 2008



CONTOUR INTERVAL 40 FEET
NORTH AMERICAN VERTICAL DATUM OF 1988
This map was produced to conform with the
National Geospatial Program US Topo Product Standard, 2011.
A metadata file associated with this product is draft version 0.6.3



Stone Mountain	Lake De Smet West	Lake De Smet East
Hunter Mesa	North Ridge	Buffalo
Caribou Creek	Klondike Ranch	T A Ranch

ROAD CLASSIFICATION			
Interstate Route	State Route	US Route	State Route
US Route	Local Road	FS Passenger Route	FS High Clearance Route
Ramp	4WD		

Check with local Forest Service unit
for current travel conditions and restrictions.

NORTH RIDGE, WY
2012