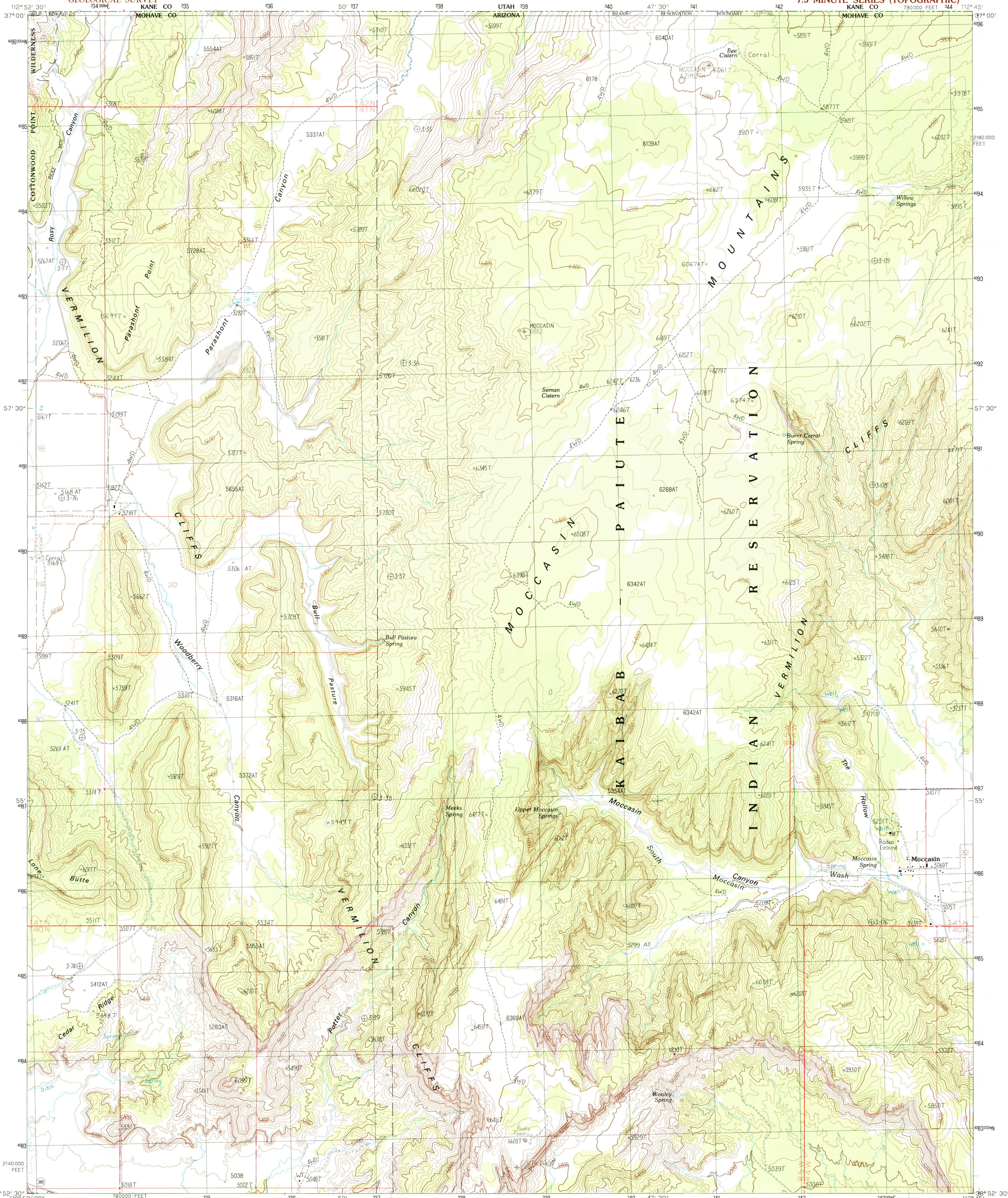


UNITED STATES
DEPARTMENT OF THE INTERIOR
GEOLOGICAL SURVEY

MOCCASIN QUADRANGLE
ARIZONA-MOHAVE CO.
7.5 MINUTE SERIES (TOPOGRAPHIC)



PRODUCED BY THE UNITED STATES GEOLOGICAL SURVEY
CONTROL BY U.S.G.S. NGS/NOAA
COMPILED FROM AERIAL PHOTOGRAPHS TAKEN 1983
FIELD CHECKED 1985 MAP EDITED 1988
PROJECTION TRANSVERSE MERCATOR
GRID 100-METER UNIVERSAL TRANSVERSE MERCATOR
ZONE 12
1000-FOOT STATE GRID TICKS
UTM GRID DECLINATION 1° 05' WEST
1988 MAGNETIC NORTH DECLINATION 13° 30' EAST
VERTICAL DATUM NATIONAL GEODETIC VERTICAL DATUM OF 1929
HORIZONTAL DATUM 1983 NORTH AMERICAN DATUM
To place on the predicted North American Datum of 1983,
move the projection lines as shown by dashed corner ticks
(6 meters north and 68 meters east).
There may be private inholdings within the boundaries of any
Federal and State Reservations shown on this map.
No distinction made between houses, barns, and other buildings.
Where omitted, land lines have not been established.

PROVISIONAL MAP
Produced from original
manuscript drawings. Infor-
mation shown as of date of
photography. 1

SCALE 1:24 000
CONTOUR INTERVAL 40 FEET
THIS MAP COMPLIES WITH NATIONAL MAP ACCURACY STANDARDS
FOR SALE BY U.S. GEOLOGICAL SURVEY, DENVER, COLORADO 80225
OR RESTON, VIRGINIA 22092

QUADRANGLE LOCATION		
1	2	3
4	5	6
7	8	9

1	2	3
4	5	6
7	8	9

ADJOINING 7.5' QUADRANGLE NAMES

ROAD LEGEND
Improved Road
Unimproved Road
Trail
Interstate Route
U.S. Route
State Route
MOCCASIN, ARIZONA
PROVISIONAL EDITION 1988
36112-H7-024

RECD FILE COPY
JUL 29 1988
U.S. GEOLOGICAL SURVEY