

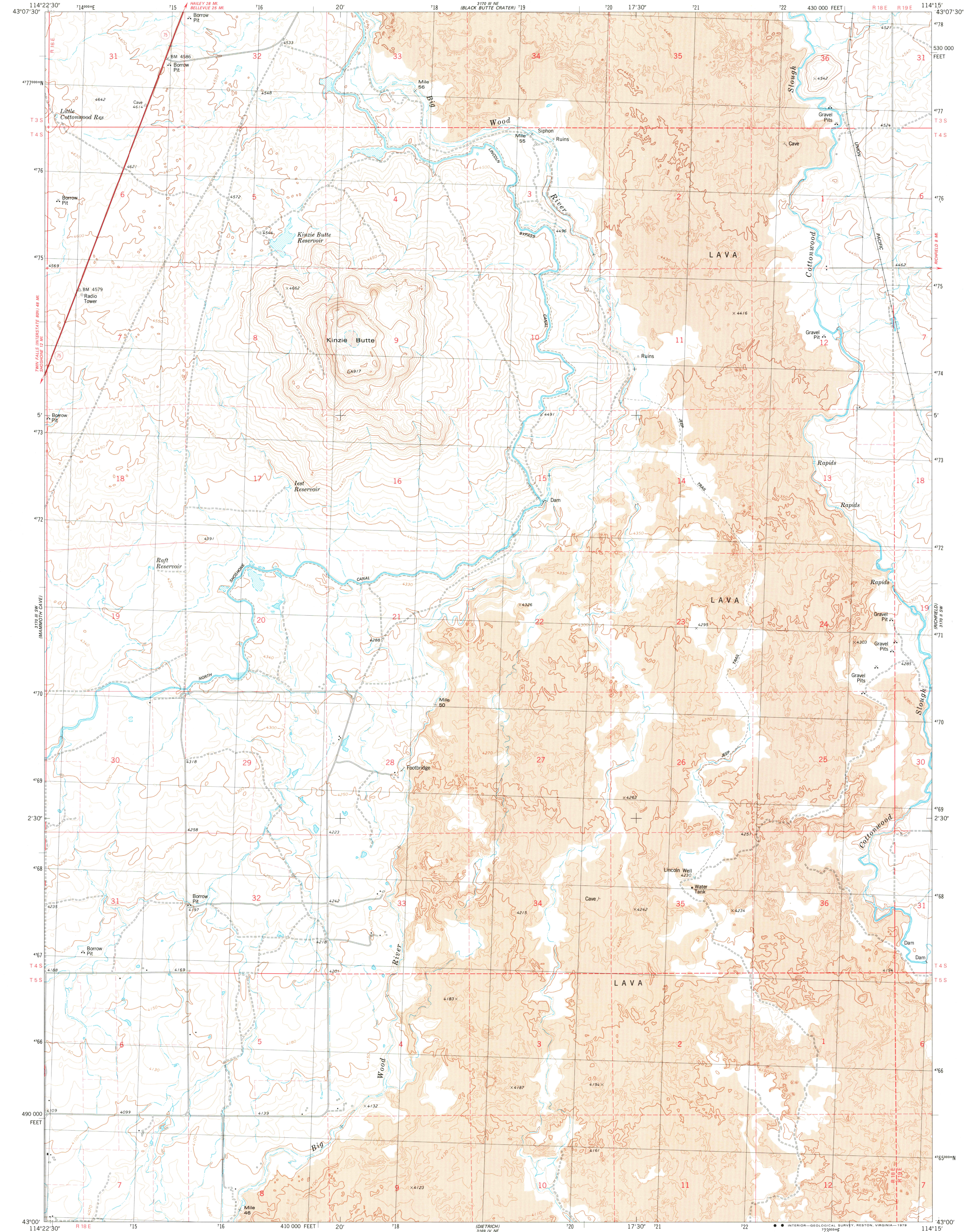
3170 III NW  
(SUMMIT RES.)

UNITED STATES  
DEPARTMENT OF THE INTERIOR  
GEOLOGICAL SURVEY

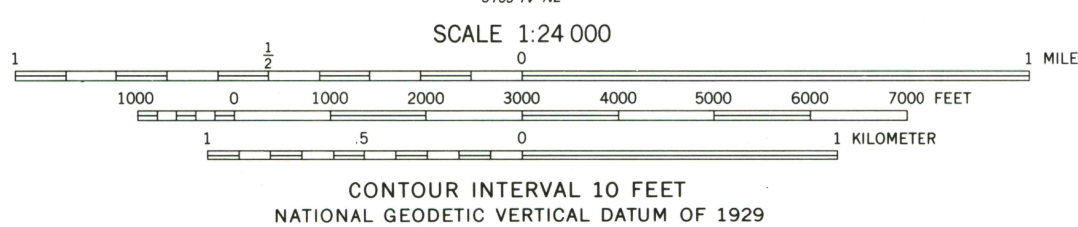
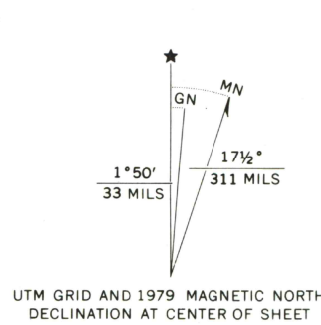


KINZIE BUTTE QUADRANGLE  
IDAHO-LINCOLN CO.  
7.5 MINUTE SERIES (TOPOGRAPHIC)

3170 III NW  
(PAPER MAP)



Mapped, edited, and published by the Geological Survey  
Control by USGS and NOS/NOAA  
Topography by photogrammetric methods from aerial  
photographs taken 1971. Field checked 1973  
Map edited 1979  
Projection and 10,000-foot grid ticks: Idaho coordinate  
system, central zone (transverse Mercator)  
1000-meter Universal Transverse Mercator grid, zone 11  
1927 North American datum  
To place on the predicted North American Datum 1983  
move the projection lines 14 meters north and  
72 meters east as shown by dashed corner ticks  
Fine red dashed lines indicate selected fence and field lines  
where generally visible on aerial photographs  
This information is unchecked



ROAD CLASSIFICATION  
Primary highway, hard surface  
Secondary highway, hard surface  
Unimproved road  
Interstate Route  
U. S. Route  
State Route

KINZIE BUTTE, IDAHO  
N4300-W11415/7.5

1979

DMA 3170 III SE-SERIES V893

THIS MAP COMPLIES WITH NATIONAL MAP ACCURACY STANDARDS  
FOR SALE BY U. S. GEOLOGICAL SURVEY, DENVER, COLORADO 80225, OR RESTON, VIRGINIA 22092  
A FOLDER DESCRIBING TOPOGRAPHIC MAPS AND SYMBOLS IS AVAILABLE ON REQUEST