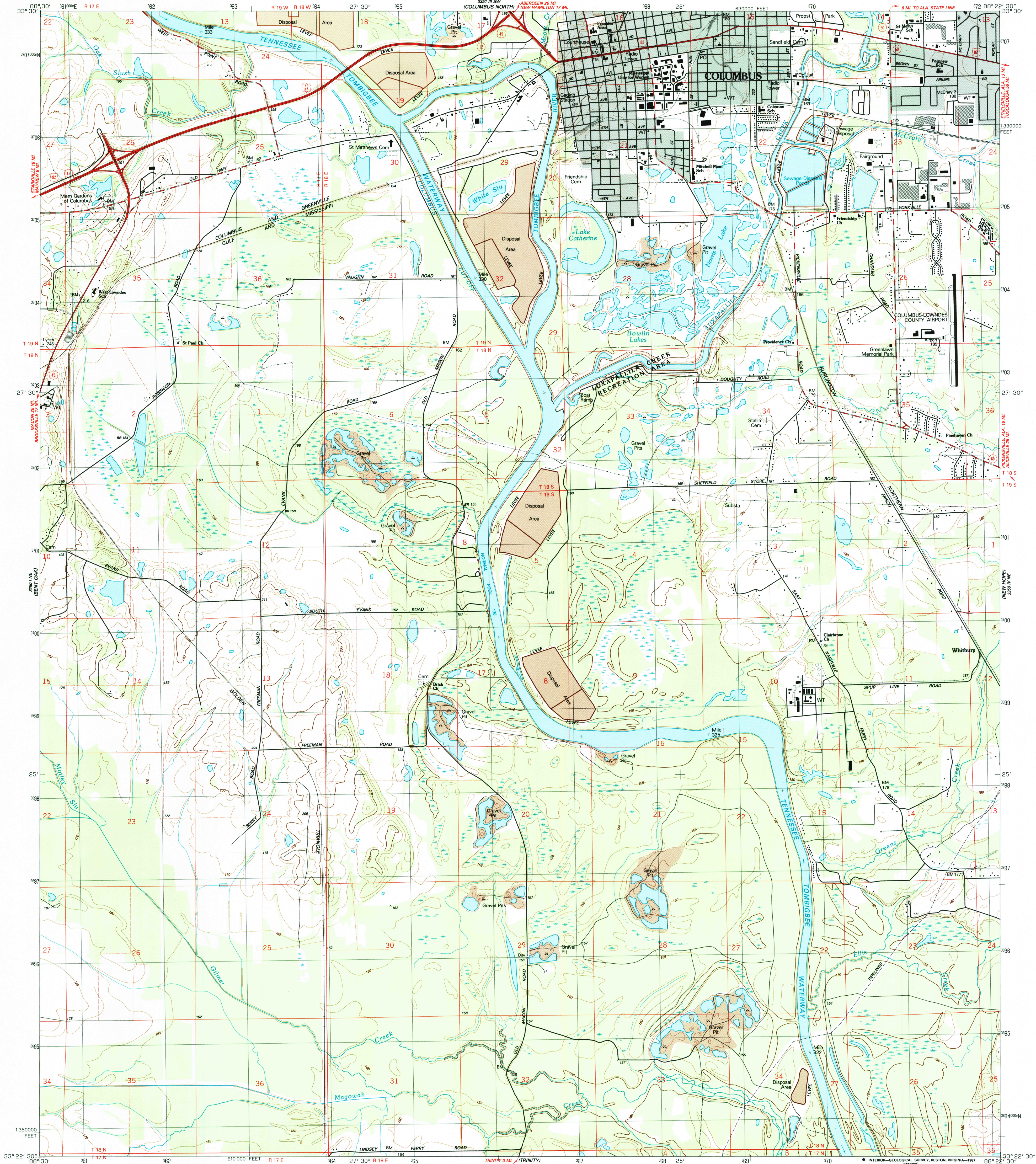
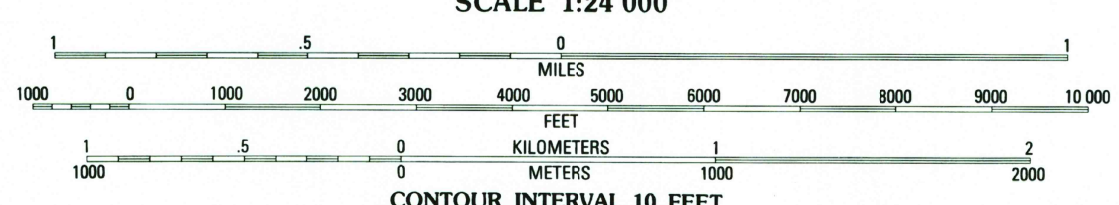
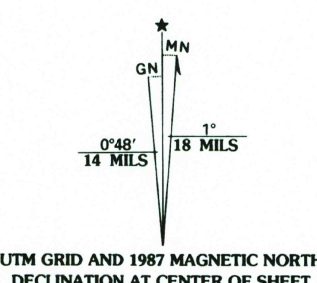


UNITED STATES
DEPARTMENT OF THE INTERIOR
GEOLOGICAL SURVEY

COLUMBUS SOUTH QUADRANGLE
MISSISSIPPI-LOWNDES CO.
7.5 MINUTE SERIES (TOPOGRAPHIC)
NW 1/4 COLUMBUS 15' QUADRANGLE

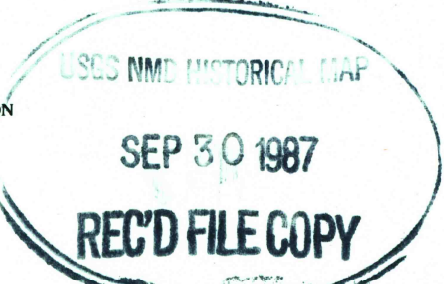


Produced by the United States Geological Survey
Control by USGS and NOS/NOAA
Topography by photogrammetric methods from aerial photographs
taken 1955. Revised from aerial photographs taken 1983
Field checked 1986. Map edited 1987
Projection and 10,000-foot grid ticks: Mississippi coordinate
system, east zone (transverse Mercator)
1000-meter Universal Transverse Mercator grid, zone 16
1927 North American Datum
To place on the predicted North American Datum 1983,
move the projection lines 11 meters south and
3 meters east as shown by dashed corner ticks
There may be private inholdings within the boundaries of
the National or State reservations shown on this map
Gray tint indicates areas in which only landmark buildings are shown
Fine red dashed lines indicate selected fence and field lines where
generally visible on aerial photographs. This information is unchecked



THIS MAP COMPLIES WITH NATIONAL MAP ACCURACY STANDARDS
FOR SALE BY U. S. GEOLOGICAL SURVEY, DENVER, COLORADO 80225, OR RESTON, VIRGINIA 22092
A FOLDER DESCRIBING TOPOGRAPHIC MAPS AND SYMBOLS IS AVAILABLE ON REQUEST

ROAD CLASSIFICATION
Primary highway, hard surface Light-duty road, hard or improved surface
Secondary highway, hard surface Unimproved road
Interstate Route U. S. Route State Route



COLUMBUS SOUTH, MISS.
NW 1/4 COLUMBUS 15' QUADRANGLE
33088-D4-TF-024
1987
DMA 3350 IV NW-SERIES V843