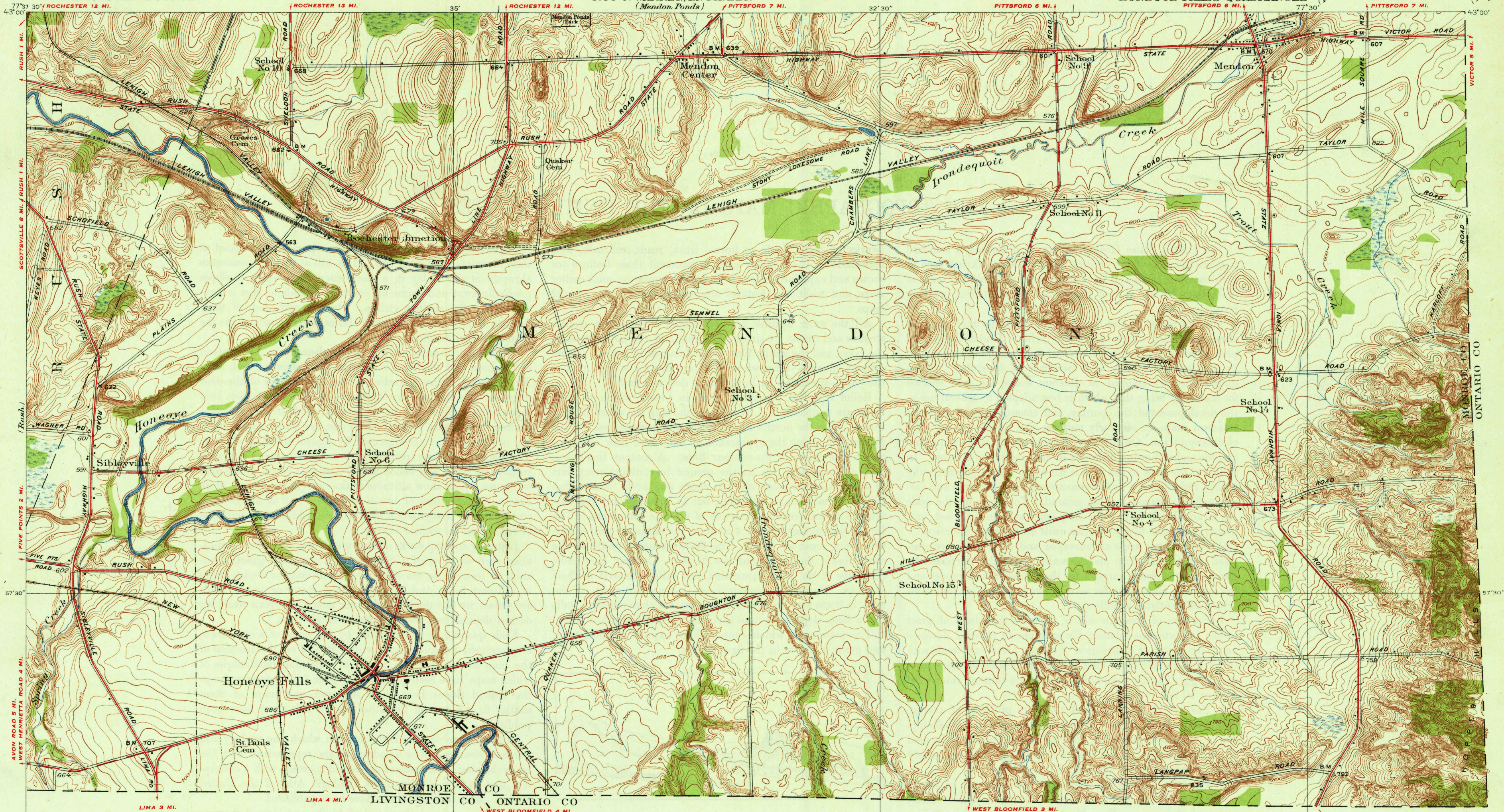


DEPARTMENT OF THE INTERIOR
U. S. GEOLOGICAL SURVEY

MONROE COUNTY, NEW YORK
REGIONAL PLANNING BOARD
DONALD S. BARROWS, CHAIRMAN, HAROLD G. DOBSON, VICE CHAIRMAN
ANDREW H. BOWN, ESTEN A. FLETCHER, FRANK W. MOFFETT, GEORGE C. WRIGHT
J. FRANKLIN BONNER, SECRETARY
ROY P. WARREN, ENGINEER
(Mendon Ponds)

U. S. G. S.
FILE COPY
Inspection and Editing.

NEW YORK
(MONROE COUNTY)
HONEYE FALLS QUADRANGLE
PITTSFORD 6 MI. I.
ROCHESTER 12 MI. I.
PITTSFORD 7 MI. I.



THIS AREA IS SHOWN ON THE MAP OF HONEYE
QUADRANGLE, SURVEYED IN 1901, SCALE 1:62,500

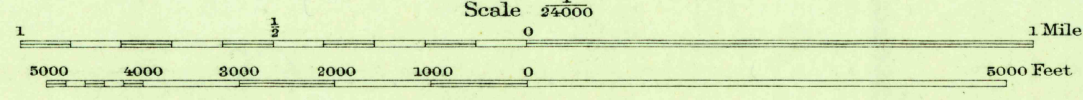
U. S. G. S.
FILE COPY
Inspection and Editing.

USGS
Historical File
Topographic Division

U. S. G. S.
FILE COPY
Inspection and Editing.

Topography by K.W. Trimble, R.H. Runyan, H.B. Smith and Crawford Dickey
Culture and drainage in part compiled from aerial photographs
Control by U.S. Geological Survey
Surveyed in 1932

APPROXIMATE MEAN
SECESSION, 1922



Polyconic projection, North American datum
5000 yard grid based upon U.S. zone system, B

HONEYE FALLS, N.Y.
Edition of 1934

2656:4375/1/99;

JUL 30 1934

(3445)

3445