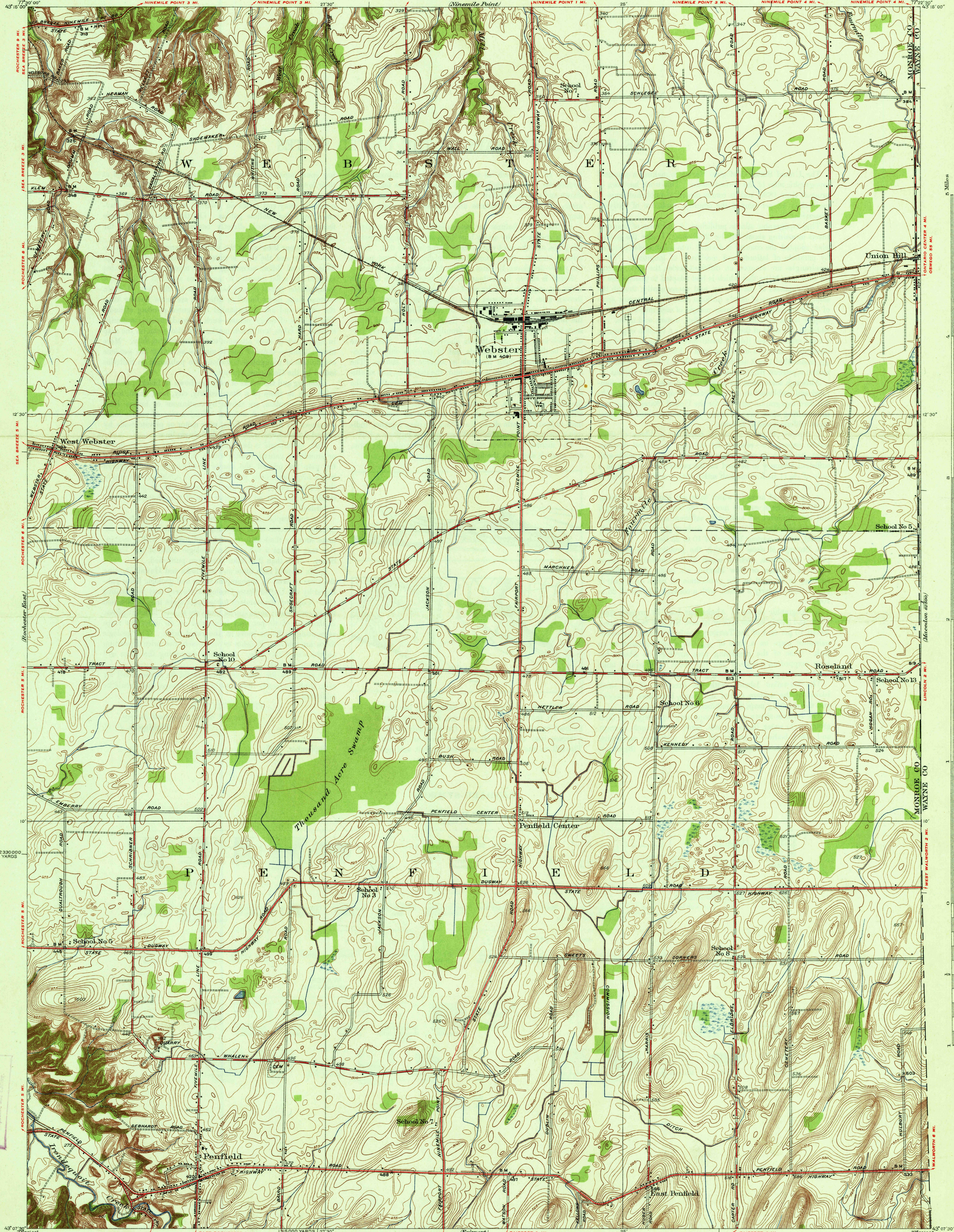


MONROE COUNTY, NEW YORK
REGIONAL PLANNING BOARD
DONALD S. BARROWS, CHAIRMAN, HAROLD G. DOBSON, VICE CHAIRMAN
ANDREW H. BOWN, ESTEN A. FLETCHER, FRANK W. MOFFETT, GEORGE C. WRIGHT
J. FRANKLIN BONNER, SECRETARY
ROY P. WARREN, ENGINEER

DEPARTMENT OF THE INTERIOR
U.S. GEOLOGICAL SURVEY

NEW YORK
(MONROE COUNTY)
WEBSTER QUADRANGLE



Topography by K.W. Trimble and J.L. Watkins
Culture and drainage in part compiled from aerial photographs
Control by U.S. Geological Survey and U.S. Coast and Geodetic Survey
Surveyed in 1931 and 1932

Scale 25,000
Contour interval 5 feet
Datum is mean sea level

USGS
Historical File
Topographic Division
Inspection and Editing

Polyconic projection, North American datum
5000 yard grid based upon U. S. zone system, B
THROUGH ROUTES
OTHER MAIN TRAVELED ROADS
INFORMATION FURNISHED BY MONROE COUNTY, 1933

WEBSTER, N.Y.
Edition of 1934
2556:5405; 29;

JUL 16 1934 (3925)

3925