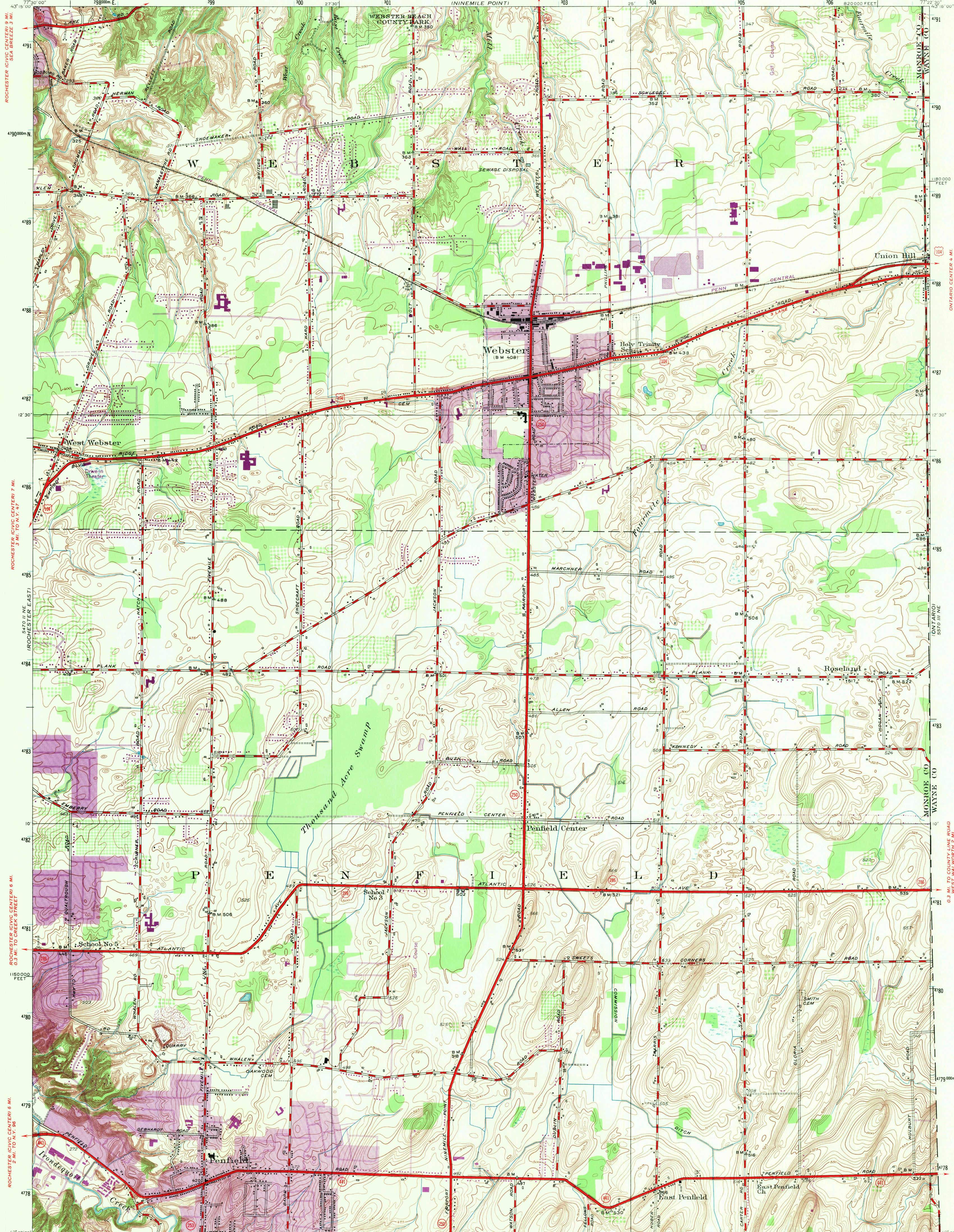


UNITED STATES
DEPARTMENT OF THE INTERIOR
GEOLOGICAL SURVEY

MONROE COUNTY, NEW YORK
REGIONAL PLANNING BOARD

NEW YORK
(MONROE COUNTY)
WEBSTER QUADRANGLE



Topography by K.W. Trimble and J.L. Watkins
Culture and drainage in part compiled from aerial photographs
Control by U.S. Geological Survey and U.S. Coast and Geodetic Survey
Surveyed in 1931 and 1932; Revised in 1952

Revisions shown in purple and recombination of woodland areas compiled from
aerial photographs taken 1969. This information not field checked
Purple tint indicates extension of urban areas

ROAD CLASSIFICATION

Heavy-duty ——— Light-duty ———
Medium-duty ——— Unimproved dirt ———
U. S. Route ——— State Route ———

UTM GRID AND 1969 MAGNETIC NORTH
DECLINATION AT CENTER OF SHEET

CONTOUR INTERVAL 5 FEET
DATUM IS MEAN SEA LEVEL

FOR SALE BY U. S. GEOLOGICAL SURVEY, WASHINGTON, D. C. 20242
A FOLDER DESCRIBING TOPOGRAPHIC MAPS AND SYMBOLS IS AVAILABLE ON REQUEST

Historical File
Topographic Division



WEBSTER, N. Y.

N4307.5-W7722.5/7.5

1952

PHOTOREVISED 1969

AMS 5570 III NW-SERIES V821

SEP 21 1970