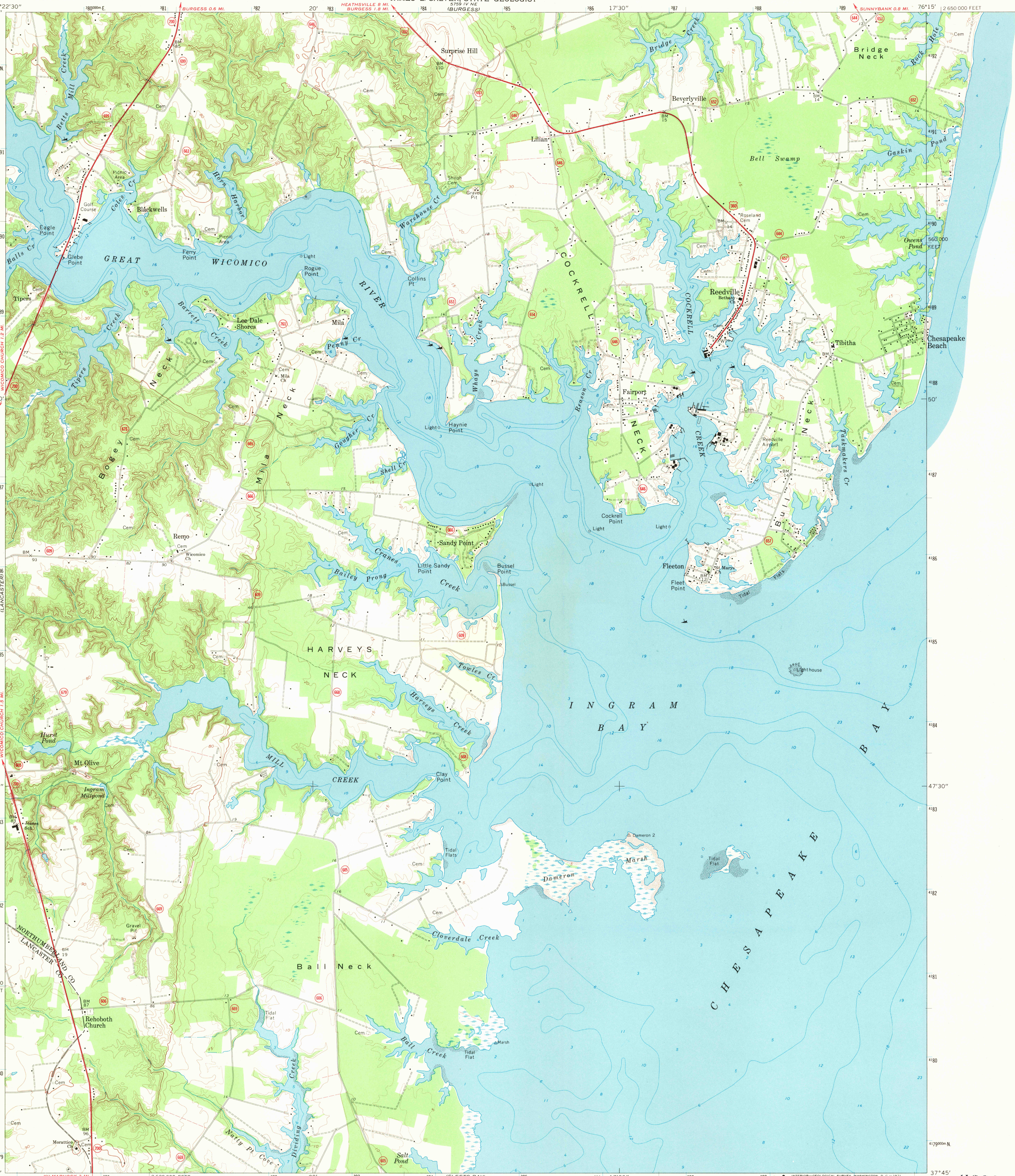


HEATHSVILLE 1.8 MI.
WICOMICO CHURCH 1.2 MI.
WICOMICO CHURCH 1.3 MI.
NORTHUMBERLAND CO. LANCASTER
KILMARNOCK 3 MI.
IRVINGTON 5.9 MI. NW

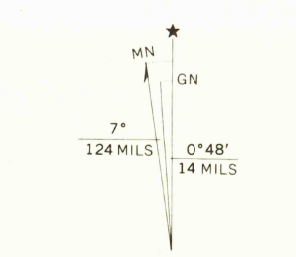
UNITED STATES
DEPARTMENT OF THE INTERIOR
GEOLOGICAL SURVEY

COMMONWEALTH OF VIRGINIA
DIVISION OF MINERAL RESOURCES
JAMES L. CALVER, STATE GEOLOGIST

REEDVILLE QUADRANGLE
VIRGINIA
7.5 MINUTE SERIES (TOPOGRAPHIC)
SE/4 HEATHSVILLE 15' QUADRANGLE



Mapped, edited, and published by the Geological Survey
Control by USGS and USC&GS
Topography by photogrammetric methods from aerial
photographs taken 1967. Field checked 1968
Supersedes Army Map Service map dated 1944
Selected hydrographic data compiled from USC&GS Chart 534 (1969)
This information is not intended for navigational purposes
Polyconic projection. 1927 North American datum
10,000-foot grid based on Virginia coordinate system, south zone
1000-meter Universal Transverse Mercator grid ticks,
zone 18, shown in blue
Fine red dashed lines indicate selected fence and field lines where
generally visible on aerial photographs. This information is unchecked



SCALE 1:24,000
CONTOUR INTERVAL 10 FEET
DOTTED LINES REPRESENT 5-FOOT CONTOURS
DATUM IS MEAN SEA LEVEL
DEPTH CURVES AND SOUNDINGS IN FEET—DATUM IS MEAN LOW WATER
SHORELINE SHOWN REPRESENTS THE APPROXIMATE LINE OF MEAN HIGH WATER
THE MEAN RANGE OF TIDE IS APPROXIMATELY 1:1000
THIS MAP COMPLIES WITH NATIONAL MAP ACCURACY STANDARDS
FOR SALE BY U. S. GEOLOGICAL SURVEY, WASHINGTON, D. C. 20242
AND VIRGINIA DIVISION OF MINERAL RESOURCES, CHARLOTTESVILLE, VIRGINIA 22903
A FOLDER DESCRIBING TOPOGRAPHIC MAPS AND SYMBOLS IS AVAILABLE ON REQUEST



ROAD CLASSIFICATION
Primary highway, all weather, Light-duty road, all weather,
hard surface, improved surface
Unimproved road, fair or dry
weather
U. S. Route State Route

REEDVILLE, VA.
SE/4 HEATHSVILLE 15' QUADRANGLE
N3745—W7615/7.5

U.S.G.S.
FILE COPY
TOPOGRAPHIC DIVISION

3345
DEC 22 1970

1968
AMS 5759 IV SE—SERIES V834