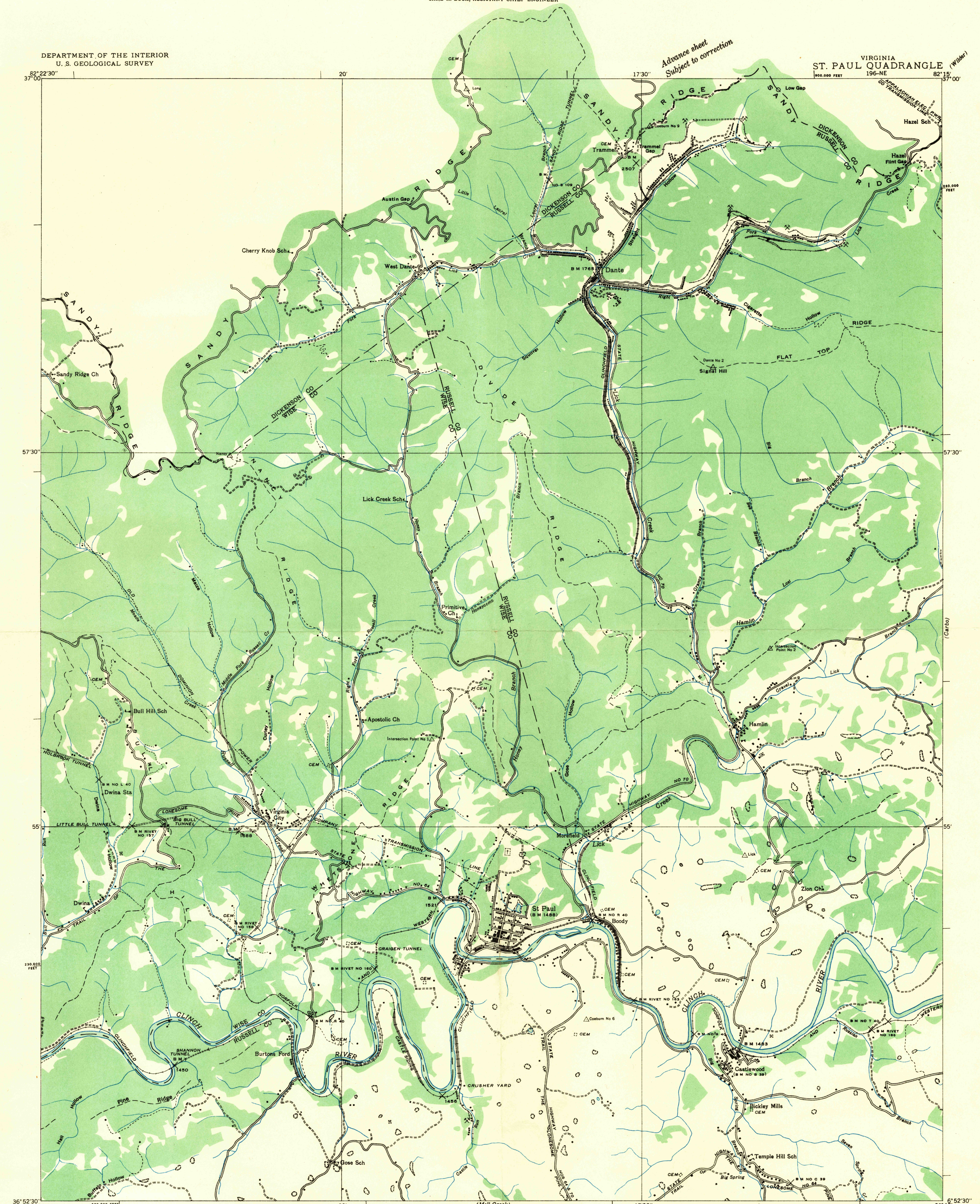
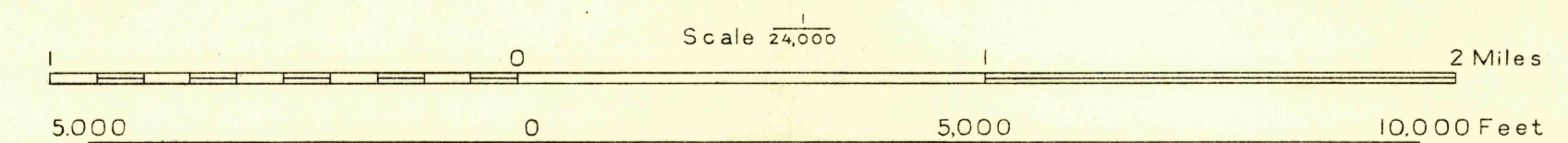


DEPARTMENT OF THE INTERIOR
U. S. GEOLOGICAL SURVEY

VIRGINIA
ST. PAUL QUADRANGLE
196-NE
100,000 FEET



Albert Pike, Division Engineer
Compiled by U. S. Geological Survey from aerial photographs
Control by U. S. Geological Survey U. S. Coast and Geodetic Survey and
Clinchfield Coal Corporation
Field examination in 1935



Datum is mean sea level

Polyconic projection. 1927 North American datum
10,000 foot grid based on Virginia (South)
rectangular coordinate system

USGS
Historical File
Topographic Division

ST. PAUL, VA.
196-NE

Legend:
Ridge line
Trail
Sinks