

(Oven Fork)
(Estillville)
(Estillville)
(Estillville)

DEPARTMENT OF THE INTERIOR
FRANKLIN K. LANE, SECRETARY
U. S. GEOLOGICAL SURVEY
GEORGE OTIS SMITH, DIRECTOR

768-N-1-E/2
TOPOGRAPHY
STATE OF VIRGINIA
GEOLOGICAL SURVEY
THOMAS L. WATSON, DIRECTOR
(Pound)

Advance sheet
Subject to correction

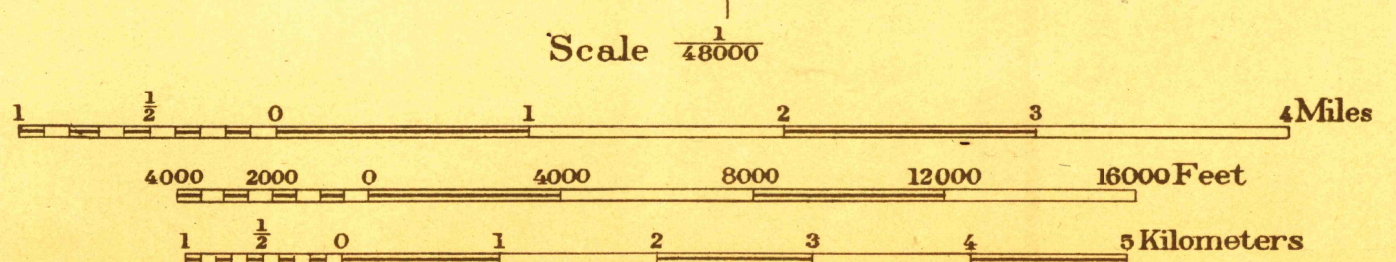
VIRGINIA
WISE QUADRANGLE

(Clintwood)
(Coeburn)

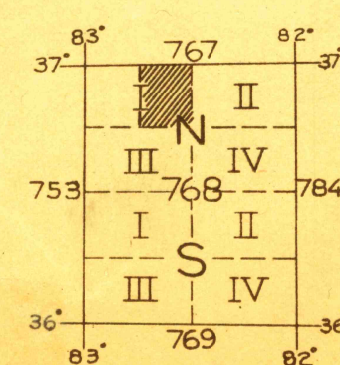


R. B. Marshall, Chief Geographer.
Frank Sutton, Geographer in charge.
Topography by Fred McLaughlin, T. F. Slaughter,
J. B. Leavitt and Kostka Mudd
Control by Clinchfield Coal Corporation S. S. Gannett
Fred McLaughlin, L. F. Biggs, and J. B. Metcalfe, Jr.
Surveyed in 1916.

SURVEYED IN COOPERATION WITH THE STATE OF VIRGINIA



Contour interval 50 feet.
Datum is mean sea level.



II STORICAL FILES
FILE COPIES
(DO NOT REMOVE)

APPROXIMATE MEAN
DECLINATION 1916

WISE