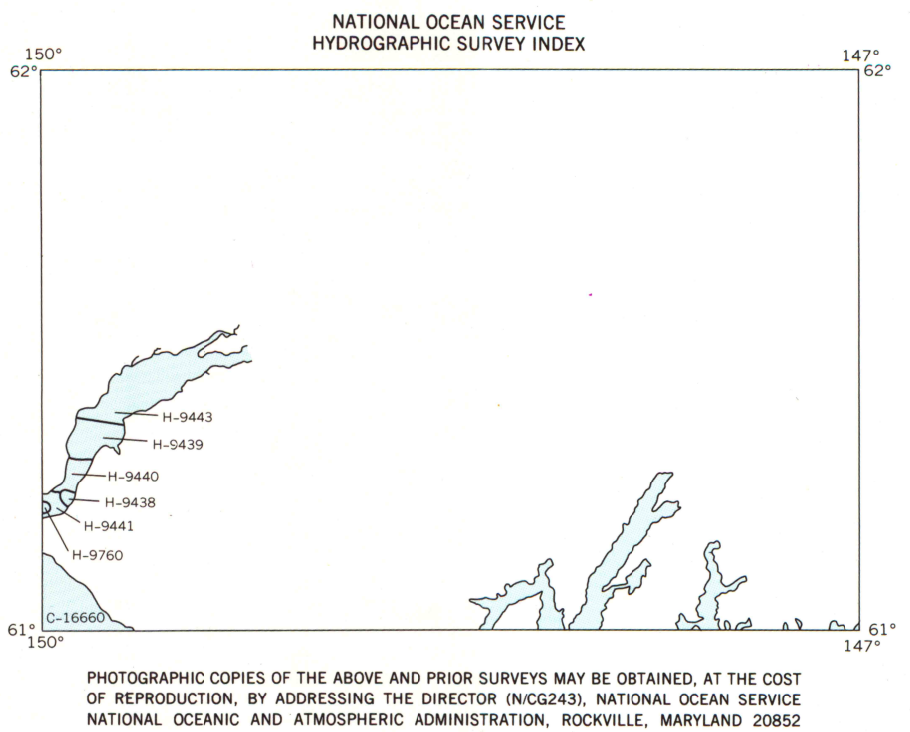
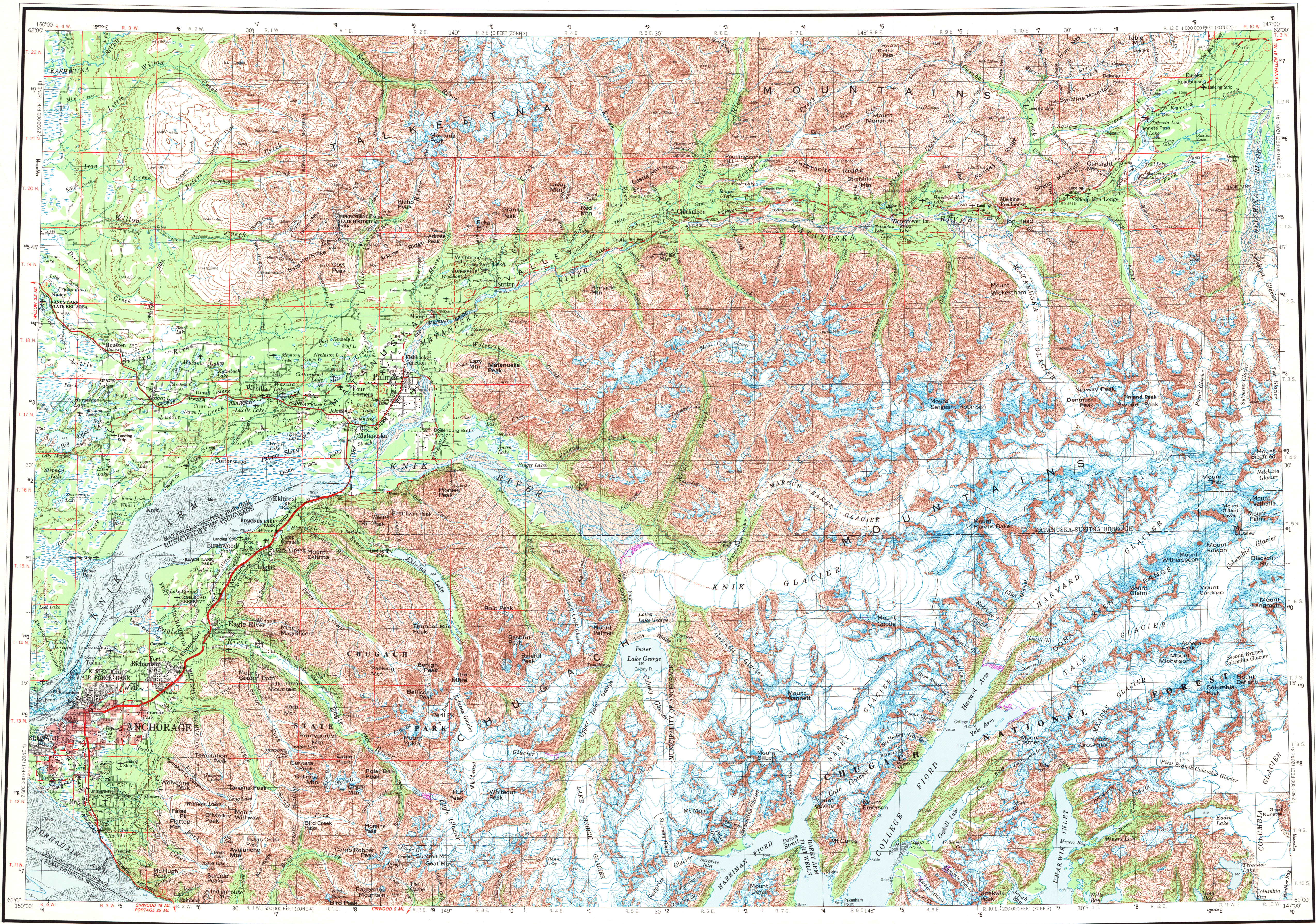


ANCHORAGE

ALASKA
TOPOGRAPHIC-BATHYMETRIC SERIES

UNITED STATES
DEPARTMENT OF THE INTERIOR
GEOLOGICAL SURVEY

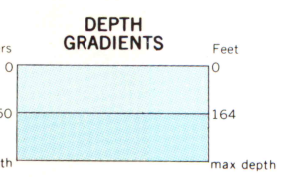


NATIONAL OCEAN SERVICE
HYDROGRAPHIC SURVEY INFORMATION

SURVEY NUMBER	SURVEY DATE	SURVEY SCALE	SURVEY LINE SPACING (NAUT. MILES)
H-9438	1974	1:50,000	02-05
H-9439	1974	1:50,000	03-10
H-9440	1974	1:50,000	02-05
H-9441	1974	1:50,000	01-05
H-9442	1974	1:50,000	02-10
H-9765	1978	1:50,000	03-07

BATHYMETRY COMPILED IN 1982 BY NATIONAL OCEAN SERVICE. BATHYMETRY WAS COMPILED FROM NOS HYDROGRAPHIC SURVEYS (SEE INDEX). BATHYMETRY SURVEY DATA COMPLY WITH INTERNATIONAL HYDROGRAPHIC ORGANIZATION SPECIAL PUBLICATION 44 ACCURACY STANDARDS AND/OR STANDARDS USED AS OF THE DATE OF THE SURVEY. THIS INFORMATION IS NOT INTENDED FOR NAVIGATIONAL PURPOSES.

U.S. Regional
Depository Copy
DO NOT DISCARD



A.H. ROBINSON
MAP LIBRARY
NOV 20 1989
University of Wisconsin
Madison

CONVERSION TABLE			
Meters	Feet	Feet	Meters
1	3.2808	1	3.048
2	6.5617	2	6.096
3	9.8425	3	9.144
4	13.1234	4	12.192
5	16.4042	5	15.240
6	19.6850	6	18.288
7	22.9659	7	21.336
8	26.2467	8	24.384
9	29.5275	9	27.432
10	32.8084	10	30.480
To convert meters to feet multiply by 3.2808		To convert feet to meters multiply by 0.3048	

MAPPED, EDITED, AND PUBLISHED BY THE GEOLOGICAL SURVEY

CONTROL BY USGS, NOS/NOAA, AND USACE

COMPILED IN 1965 FROM U. S. GEOLOGICAL SURVEY 1:63,360-SCALE MAPS, AND ANCHORAGE AND VICINITY 1:24,000-SCALE MAPS, SURVEYED 1948, 1950, 1952, 1960, AND 1962. REVISED IN PART FROM AERIAL PHOTOGRAPHS TAKEN 1978 AND 1979. PURPLE SCREENED PATTERN SHOWN ON GLACIAL FEATURES INDICATES GLACIAL ADVANCE OR RECESSSION, VISIBLE AS OF THE DATE OF PHOTOGRAPHY. MAP NOT FIELD CHECKED.

PROJECTION AND 10,000-METER GRID
UNIVERSAL TRANSVERSE MERCATOR, ZONE 6
100,000-FOOT GRID TICS BASED ON ALASKA COORDINATE SYSTEM, ZONES 4 AND 3
1927 NORTH AMERICAN DATUM. TO PLACE ON THE PREDICTED NORTH AMERICAN DATUM 1983 MOVE THE PROJECTION LINE 62 METERS NORTH AND 117 METERS EAST.

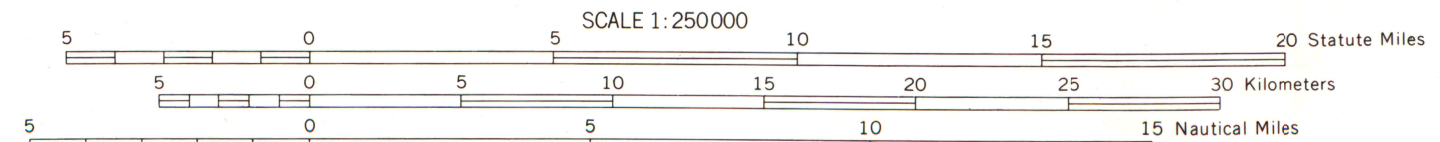
RED TINT INDICATES AREAS IN WHICH ONLY LANDMARK BUILDINGS ARE SHOWN.
GRAY LAND LINES REPRESENT UNSURVEYED AND UNMARKED LOCATIONS
PREDETERMINED BY THE BUREAU OF LAND MANAGEMENT
FOLIOS S-1, S-2, S-13, AND S-14, SEWARD MERIDIAN, AND FOLIOS CR-4 AND CR-5, COPPER RIVER MERIDIAN

SWAMPS, AS PORTRAYED, INDICATE ONLY THE WETTER AREAS.
USUALLY OF LOW RELIEF, AS INTERPRETED FROM AERIAL PHOTOGRAPHS.
LAKE ELEVATIONS ARE UNCHECKED.

FEDERAL RESERVATION BOUNDARIES ESTABLISHED BY THE ALASKA NATIONAL INTEREST LANDS CONSERVATION ACT, PL. 96-487, DEC. 2, 1980 ARE SHOWN AS COMPILED BY THE ADMINISTERING AGENCIES.

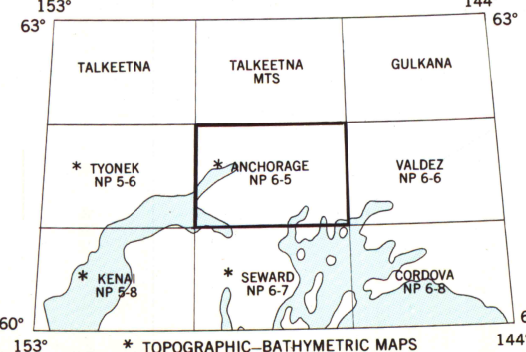
THE ALASKA MARITIME NATIONAL WILDLIFE REFUGE CONSISTS OF ALL THE PUBLIC LANDS IN THE COASTAL WATERS AND ADJACENT SEAS OF ALASKA CONSISTING OF ISLANDS, ISLETS, ROCKS, REEFS, CAYS AND SPURTS, AS WELL AS DESIGNATED MAINLAND AREAS.

THERE MAY BE PRIVATE INHOLDINGS WITHIN THE BOUNDARIES OF THE NATIONAL OR STATE RESERVATIONS SHOWN ON THIS MAP.



CONTOUR INTERVAL 200 FEET
NATIONAL GEODETIC VERTICAL DATUM OF 1929
BATHYMETRIC CONTOUR INTERVAL 10 METERS TO MAXIMUM DEPTH
SUPPLEMENTED BY 5 METER INTERVALS
DATUM IS MEAN LOWER LOW WATER
THE RELATIONSHIP BETWEEN THE TWO DATUMS IS VARIABLE
SHOULDER SHOWN REPRESENTS THE APPROXIMATE LINE OF MEAN HIGH WATER
1985 MAGNETIC DECLINATION AT SOUTH EDGE OF SHEET VARIES FROM 25° TO 26°30' EAST
FOR SALE BY THE U. S. GEOLOGICAL SURVEY, FAIRBANKS, ALASKA 99701, DENVER, COLORADO 80225
OR RESTON, VIRGINIA 22092 AND BY NATIONAL OCEAN SERVICE, RIVERDALE, MARYLAND 20737
A FOLDER DESCRIBING TOPOGRAPHIC MAPS AND SYMBOLS IS AVAILABLE UPON REQUEST

INDEX TO ADJOINING SHEETS



ROAD CLASSIFICATION

HEAVY DUTY MEDIUM DUTY
LIGHT DUTY UNIMPROVED DIRT
STATE ROUTE

ANCHORAGE, ALASKA

61147-A1-TB-250

1962

LIMITED REVISION 1985

4370
523D
146