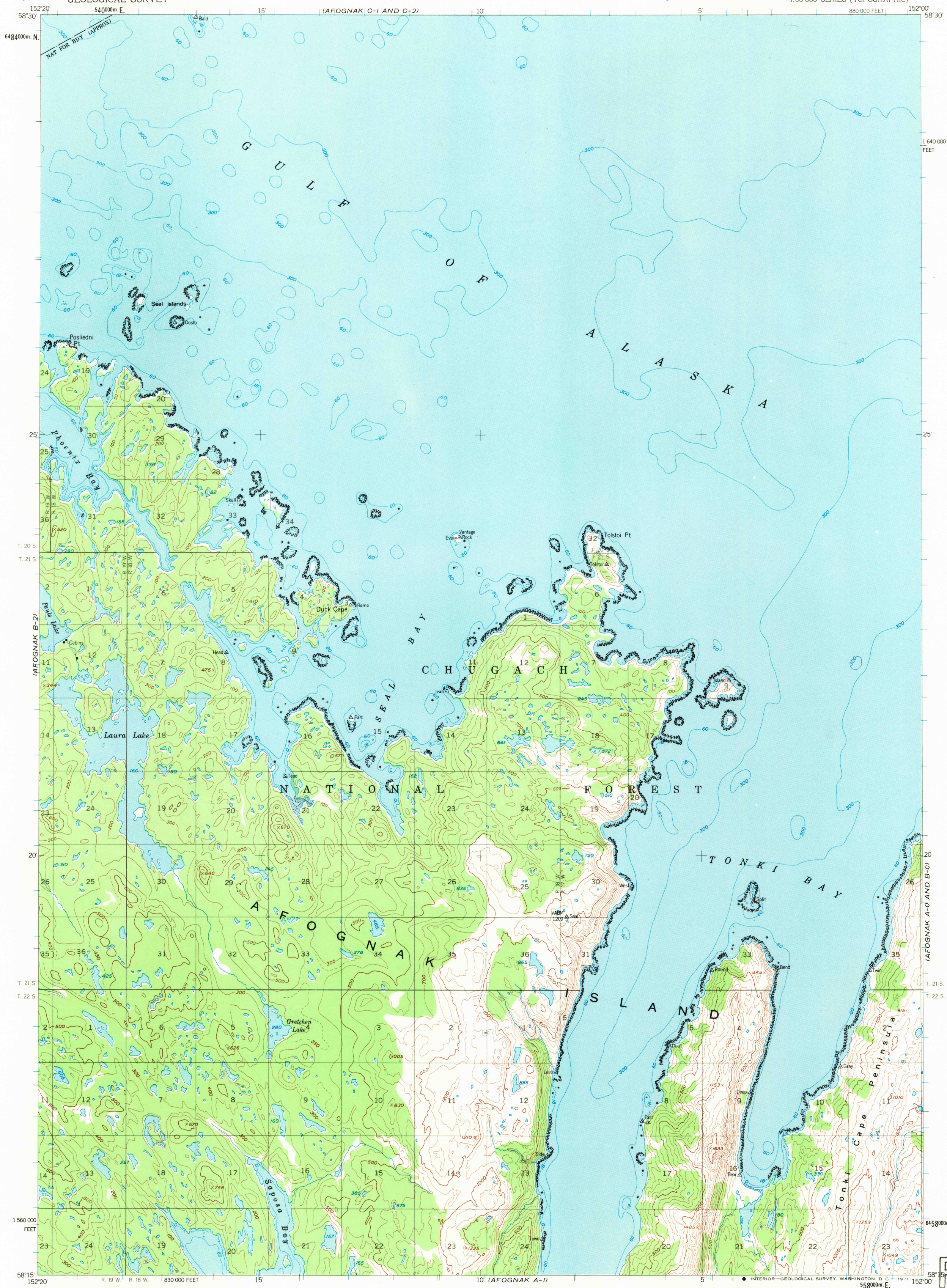


UNITED STATES
DEPARTMENT OF THE INTERIOR
GEOLOGICAL SURVEY

AFOGNAK (B-1) QUADRANGLE
ALASKA-KODIAK ISLAND BOROUGH
1:63 360 SERIES (TOPOGRAPHIC)



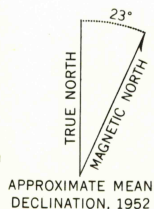
Mapped, edited, and published by the Geological Survey
Control by USC&GS and USCE

Topography by photogrammetric methods from aerial photographs
taken 1951 and 1952. Map not field checked

Selected hydrographic data compiled from USC&GS
Chart 8533 (1952). This information is not intended
for navigational purposes

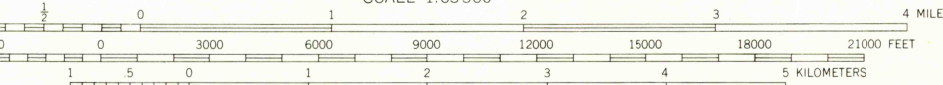
Universal Transverse Mercator projection, 1927 North American datum
10,000-foot grid based on Alaska coordinate system, zone 5
1000-meter Universal Transverse Mercator grid ticks,
zone 5, shown in blue

Land lines represent unsurveyed and unmarked locations
predetermined by the Bureau of Land Management
Folio S-23, Seward Meridian



APPROXIMATE MEAN
DECLINATION, 1952

SCALE 1:63 360



CONTOUR INTERVAL 100 FEET

DASHED LINES REPRESENT 50-FOOT CONTOURS

DATUM IS MEAN SEA LEVEL

DEPTH CURVES IN FEET-DATUM IS MEAN LOWER LOW WATER

SHORELINE SHOWN REPRESENTS THE APPROXIMATE LINE OF MEAN HIGH WATER

THE AVERAGE RANGE OF TIDE IS APPROXIMATELY 9 FEET

FOR SALE BY U.S. GEOLOGICAL SURVEY

FAIRBANKS, ALASKA 99701, DENVER, COLORADO 80225, OR WASHINGTON, D. C. 20242
A FOLDER DESCRIBING TOPOGRAPHIC MAPS AND SYMBOLS IS AVAILABLE ON REQUEST



QUADRANGLE LOCATION

ROAD CLASSIFICATION
No roads or trails in this area

AFOGNAK (B-1), ALASKA
N5815-W15200/15X20

1952
MINOR REVISIONS 1970

USGS
Historical File
Topographic Division

U.S.G.S.

FILE COPY
TOPOGRAPHIC DIVISION

HISTORICAL

1695

JUL 1 1971