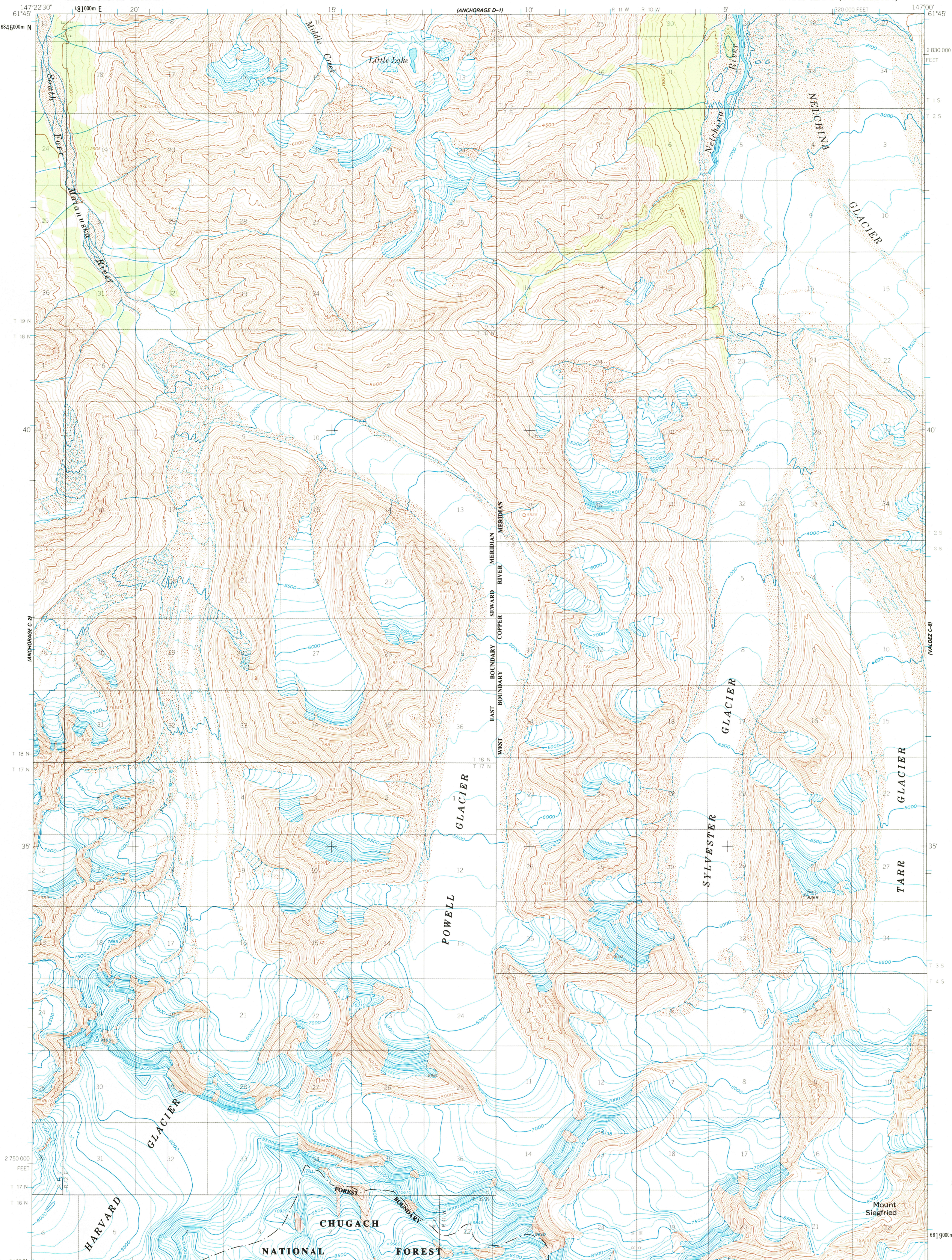


ANCHORAGE D-1

UNITED STATES
DEPARTMENT OF THE INTERIOR
GEOLOGICAL SURVEY

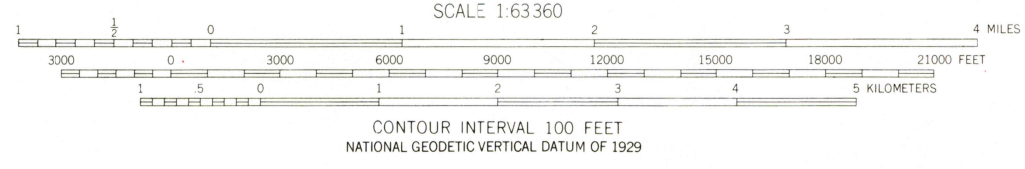
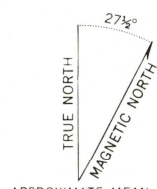
ANCHORAGE (C-1) QUADRANGLE
ALASKA-MATANUSKA-SUSITNA BOROUGH
1:63 360 SERIES (TOPOGRAPHIC)

ANCHORAGE D-1



ANCHORAGE B-1

Mapped, edited, and published by the Geological Survey
Control by USGS and NOS/NOAA
Topography by photogrammetric methods from aerial photographs
taken 1948, 1950, 1954, and 1957, field annotated 1960
Map not field checked
Projection and 1000-meter grid ticks shown in blue:
Universal Transverse Mercator, zone 6
10,000-foot grid ticks based on Alaska coordinate
system, zone 3. 1927 North American Datum
To place on the predicted North American Datum 1983 move
the projection lines 60 meters north and 114 meters east
Land lines represent unsurveyed and unmarked locations
predetermined by the Bureau of Land Management
Folios CR-5, Copper River Meridian, and S-1, and S-14,
Seward Meridian
Federal reservation boundaries established by The Alaska National
Interest Lands Conservation Act, PL 96-487, Dec. 2, 1980, are
shown as compiled by the administering agencies
There may be private inholdings within the boundaries of
the National or State reservations shown on this map



ROAD CLASSIFICATION
No roads or trails in this area

FOR SALE BY U.S. GEOLOGICAL SURVEY
FAIRBANKS, ALASKA 99701, DENVER, COLORADO 80225, OR RESTON, VIRGINIA 22092
A FOLDER DESCRIBING TOPOGRAPHIC MAPS AND SYMBOLS IS AVAILABLE ON REQUEST

ANCHORAGE (C-1), ALASKA
61147-E1-TF-063
1960
MINOR REVISION 1986

