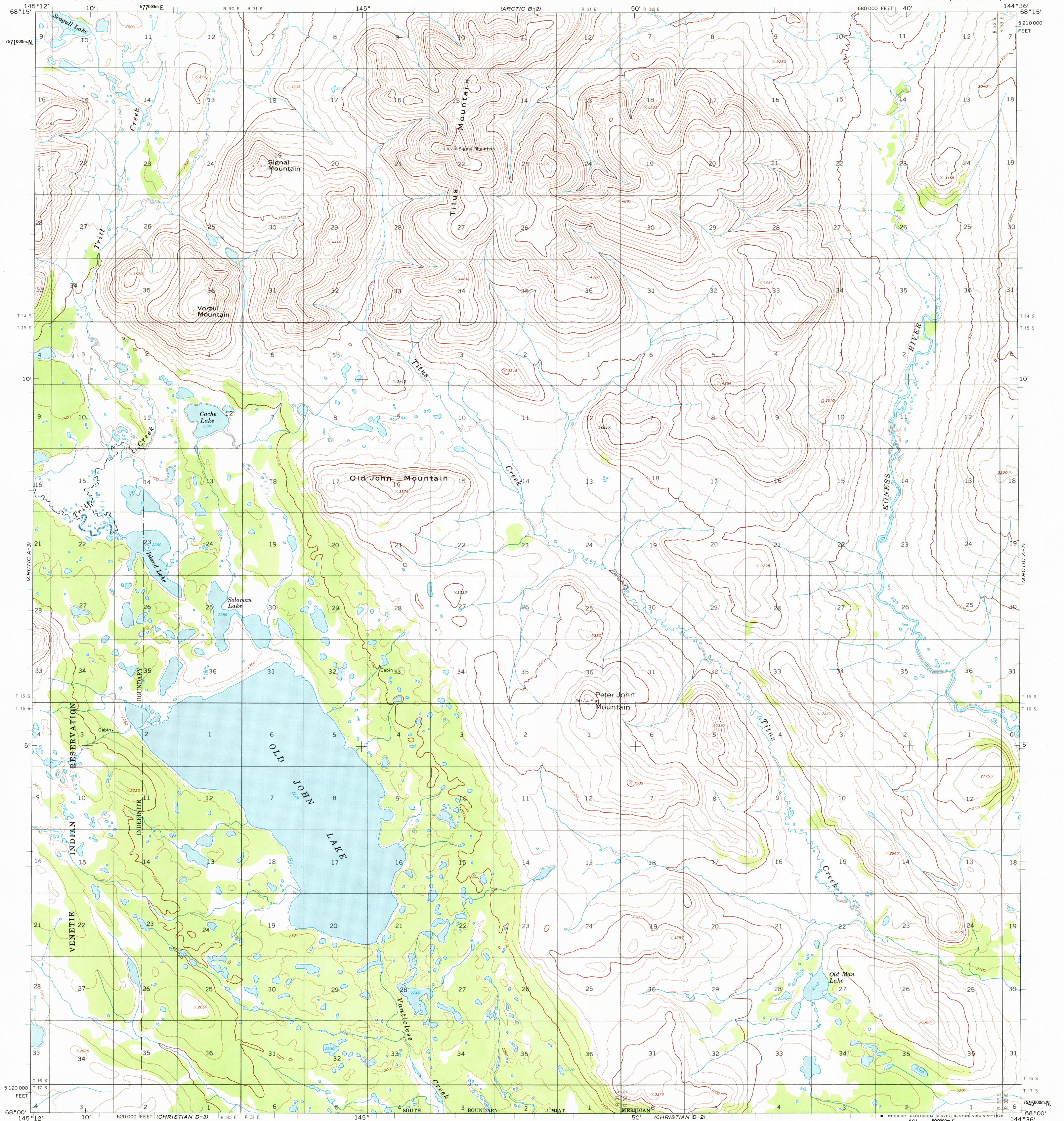


UNITED STATES
DEPARTMENT OF THE INTERIOR
GEOLOGICAL SURVEY

ARCTIC (A-2) QUADRANGLE
ALASKA
1:63 360 SERIES (TOPOGRAPHIC)



Mapped, edited, and published by the Geological Survey

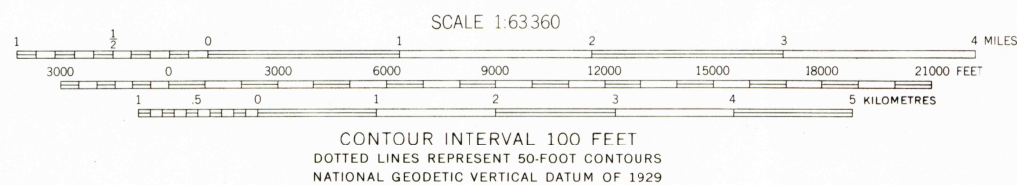
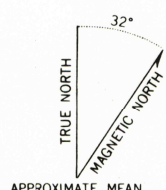
Control by USGS and NOS/NOAA

Topography by photogrammetric methods from aerial photographs taken 1972, field annotated 1972. Map not field checked

Projection and 1,000-metre grid ticks: Universal Transverse Mercator, zone 6
10,000-foot grid ticks based on Alaska coordinate system, zone 3. 1927 North American datum

Land lines represent unsurveyed and unmarked locations predetermined by the Bureau of Land Management
Folios U-12 and U-13, Umiat Meridian

Swamps as portrayed, indicate only the wetter areas, usually of low relief, as interpreted from aerial photographs



FOR SALE BY U.S. GEOLOGICAL SURVEY
FAIRBANKS, ALASKA 99701, DENVER, COLORADO 80225, OR RESTON, VIRGINIA 22092
A FOLDER DESCRIBING TOPOGRAPHIC MAPS AND SYMBOLS IS AVAILABLE ON REQUEST

ROAD CLASSIFICATION
No roads or trails in this area

ARCTIC (A-2), ALASKA
N6800-W14436/15 X 36

1972

APR 0 8 1976

USGS
Historical File
Topographic Division