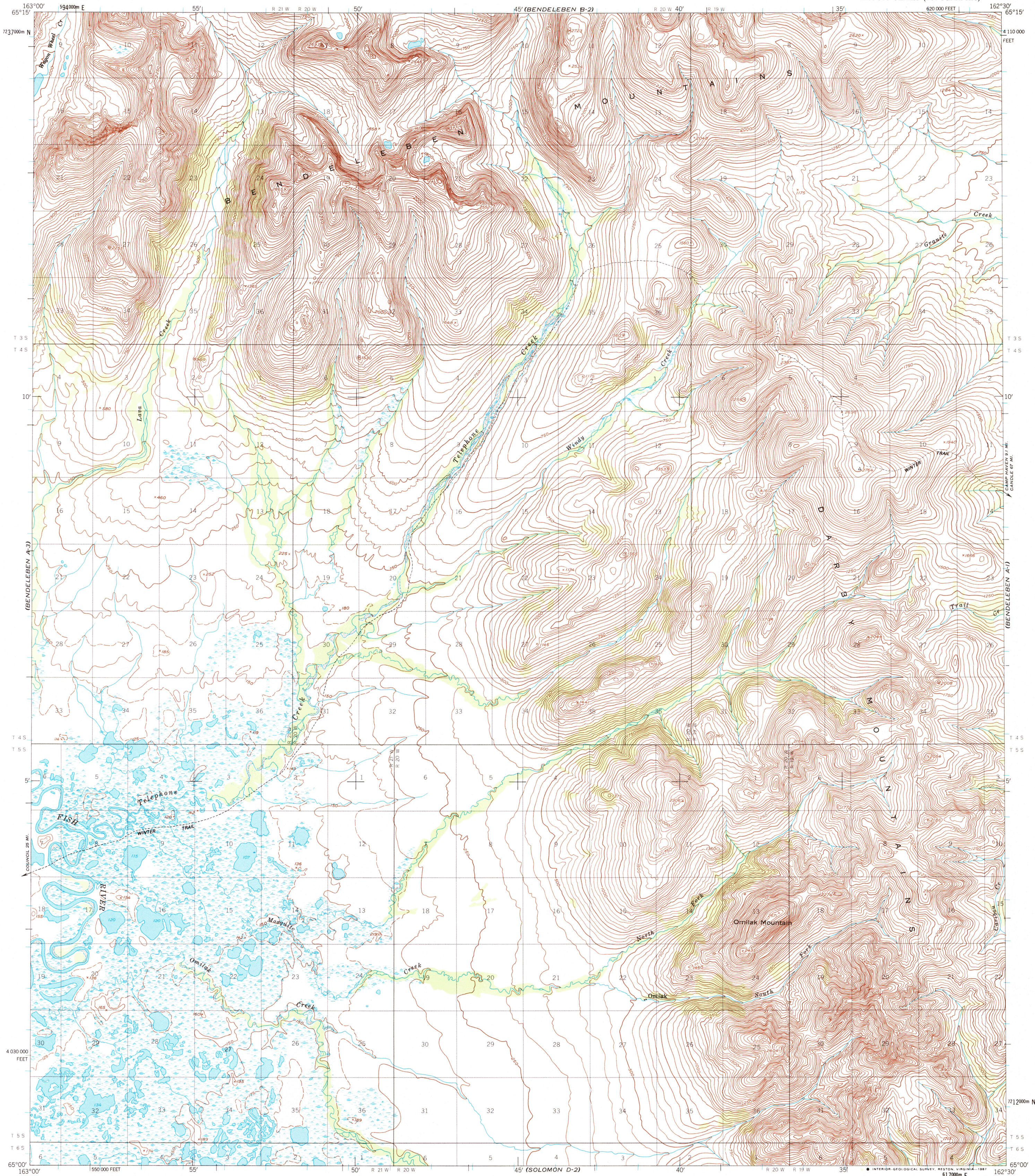
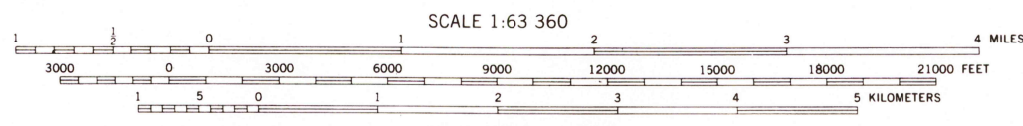
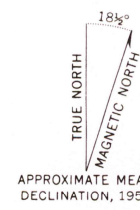


UNITED STATES  
DEPARTMENT OF THE INTERIOR  
GEOLOGICAL SURVEY

BENDELEBEN (A-2) QUADRANGLE  
ALASKA  
1:63 360 SERIES (TOPOGRAPHIC)



Mapped by the Defense Mapping Agency  
Published for civil use by the Geological Survey  
Control by USGS, NOS/NOAA, and USCE  
Topography by photogrammetric methods from aerial photographs  
taken 1950. Map not field checked.  
Projection and 1000-meter grid ticks shown in blue:  
Universal Transverse Mercator, zone 3  
10,000-foot grid ticks based on Alaska coordinate  
system, zone 7, 1927 North American Datum  
To place on the predicted North American Datum 1983 move  
the projection lines 81 meters north and 128 meters east  
Land lines represent unsurveyed and unmarked locations  
predetermined by the Bureau of Land Management  
Folio K-13, Kateel River Meridian  
Swamps, as portrayed, indicate only the wetter areas,  
usually of low relief, as interpreted from aerial photographs



CONTOUR INTERVAL 50 FEET  
DASHED LINES REPRESENT 25-FOOT CONTOURS  
NATIONAL GEODETIC VERTICAL DATUM OF 1929

FOR SALE BY U.S. GEOLOGICAL SURVEY  
FAIRBANKS, ALASKA 99701, DENVER, COLORADO 80225, OR RESTON, VIRGINIA 22092  
A FOLDER DESCRIBING TOPOGRAPHIC MAPS AND SYMBOLS IS AVAILABLE ON REQUEST

ROAD CLASSIFICATION  
Trails



BENDELEBEN (A-2), ALASKA  
65162-A5-TF-063  
1950  
MINOR REVISION 1963

