

(BENDELEBEN C-5)

(BENDELEBEN C-3)

UNITED STATES
DEPARTMENT OF THE INTERIOR
GEOLOGICAL SURVEY

UNITED STATES
DEPARTMENT OF THE ARMY
CORPS OF ENGINEERS

BENDELEBEN (B-4) QUADRANGLE
ALASKA—SECOND JUDICIAL DIVISION
1:63 360 SERIES (TOPOGRAPHIC)

U.S.G.S.
FILE COPY
TOPOGRAPHIC DIVISION

USGS
Historical File
Topographic Division

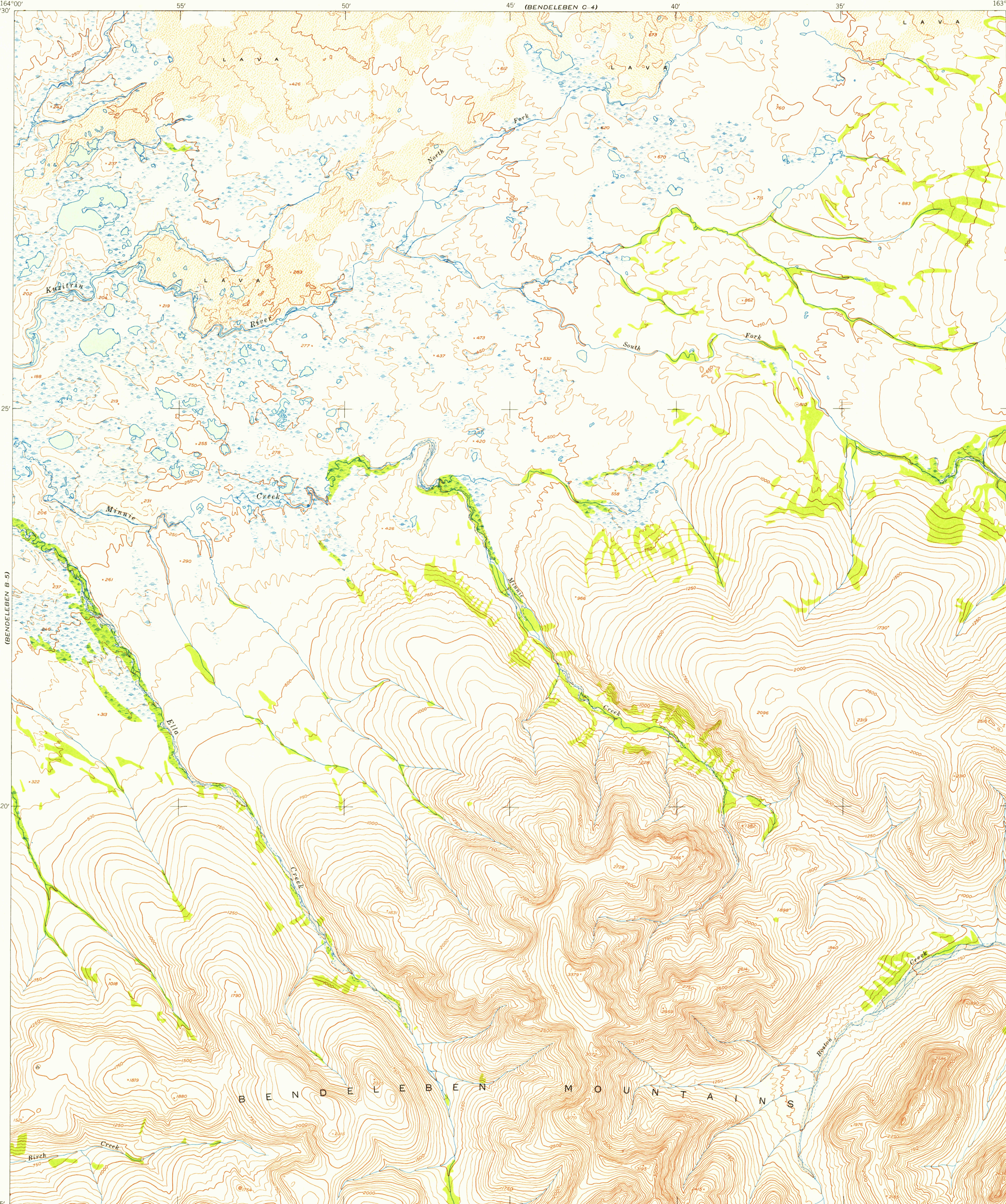
U.S.G.S.
FILE COPY
TOPOGRAPHIC DIVISION

HISTORICAL

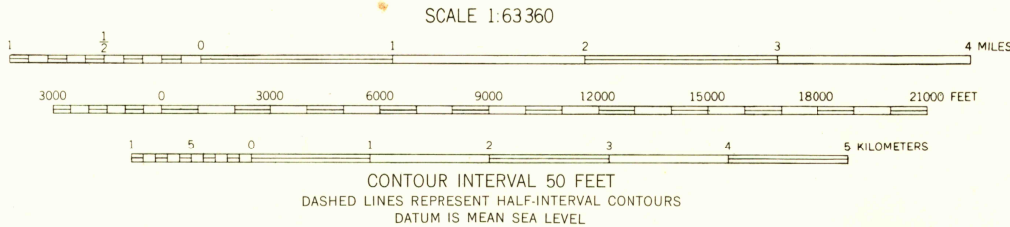
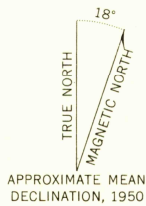
(BENDELEBEN A-3)

(BENDELEBEN A-5)

(BENDELEBEN A-3)



Mapped by the Army Map Service
Published for civil use by the Geological Survey
Control by USGS, USC&GS, and USCE
Topography from aerial photographs by multiplex methods
Aerial photographs taken 1949-1950. Map not field checked
Universal Transverse Mercator projection, zone 3
1927 North American datum
Unchecked elevations are shown in brown



| ROAD CLASSIFICATION | |
|---------------------|-------------------|
| ALL WEATHER ROADS | DRY WEATHER ROADS |
| Hard-surface | None |
| Improved dirt | None |
| Other | None |
| Trails | None |

BENDELEBEN (B-4), ALASKA
N6515-W16330/15x30
1950

FOR SALE BY U. S. GEOLOGICAL SURVEY
FAIRBANKS, ALASKA FEDERAL CENTER, DENVER, COLORADO WASHINGTON 25, D. C.
A FOLDER DESCRIBING TOPOGRAPHIC MAPS AND SYMBOLS IS AVAILABLE ON REQUEST

DEC 2 2 1955

1995