

(TELLER C-1)

UNITED STATES  
DEPARTMENT OF THE INTERIOR  
GEOLOGICAL SURVEY

UNITED STATES  
DEPARTMENT OF THE ARMY  
CORPS OF ENGINEERS

BENDELEBEN (B-6) QUADRANGLE  
ALASKA—SECOND JUDICIAL DIVISION  
1:63 360 SERIES (TOPOGRAPHIC)

U.S.G.S.  
FILE COPY  
TOPOGRAPHIC DIVISION

USCS  
Historical File  
Topographic Division

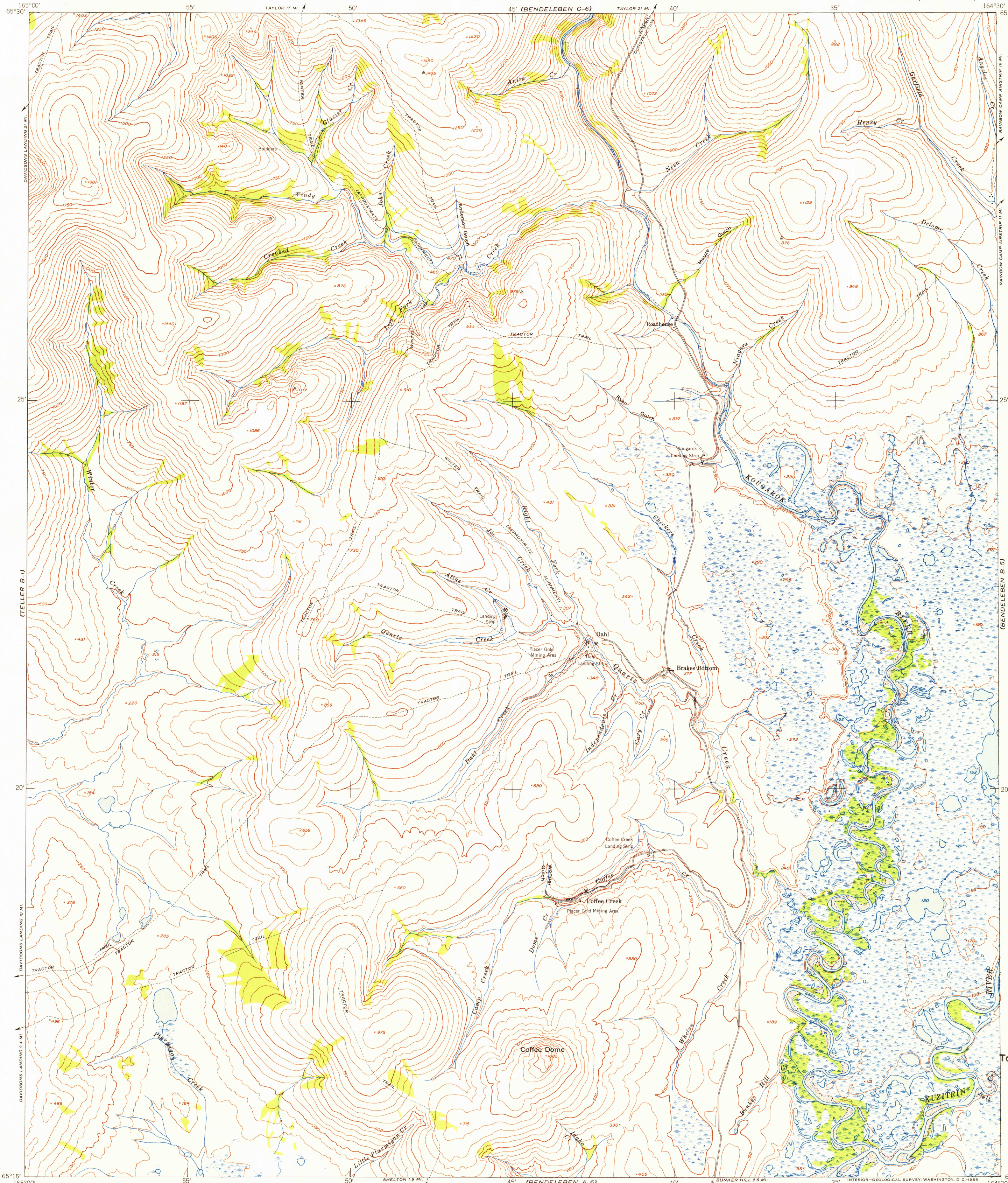
U.S.G.S.  
FILE COPY  
TOPOGRAPHIC DIVISION

[HISTORICAL]

(BENDELEBEN C-5)

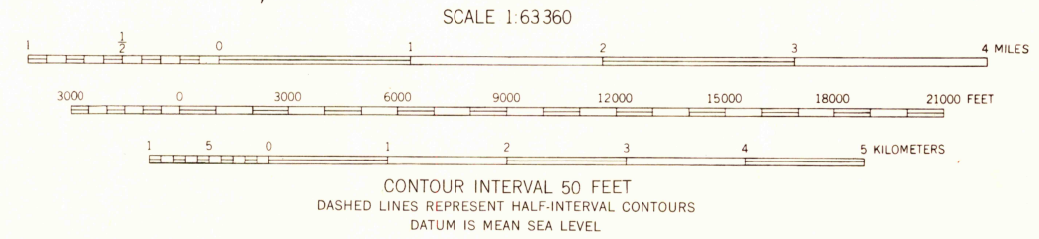
(BENDELEBEN B-5)

(BENDELEBEN A-5)



Maped by the Army Map Service  
Published for civil use by the Geological Survey  
Control by USGS, USCGS, and USCE  
Topography from aerial photographs by multiplex methods  
Aerial photographs taken 1950. Map not field checked  
Universal Transverse Mercator projection, zone 3  
1927 North American datum  
Unchecked elevations are shown in brown

TRUE NORTH  
MAGNETIC NORTH  
APPROXIMATE MEAN  
DECLINATION, 1950



ROAD CLASSIFICATION

ALL WEATHER ROADS	DRY WEATHER ROADS
Hard-surface .....	None
Other .....	None
Trails .....	None

BENDELEBEN (B-6), ALASKA  
N6515-W16430/15x30  
1950

FOR SALE BY U. S. GEOLOGICAL SURVEY  
FAIRBANKS, ALASKA FEDERAL CENTER, DENVER, COLORADO WASHINGTON 25, D. C.  
A FOLDER DESCRIBING TOPOGRAPHIC MAPS AND SYMBOLS IS AVAILABLE ON REQUEST

DEC 22 1955

2115