

(BENDELEBEN D-6)

(BENDELEBEN B-6)

UNITED STATES  
DEPARTMENT OF THE INTERIOR  
GEOLOGICAL SURVEY

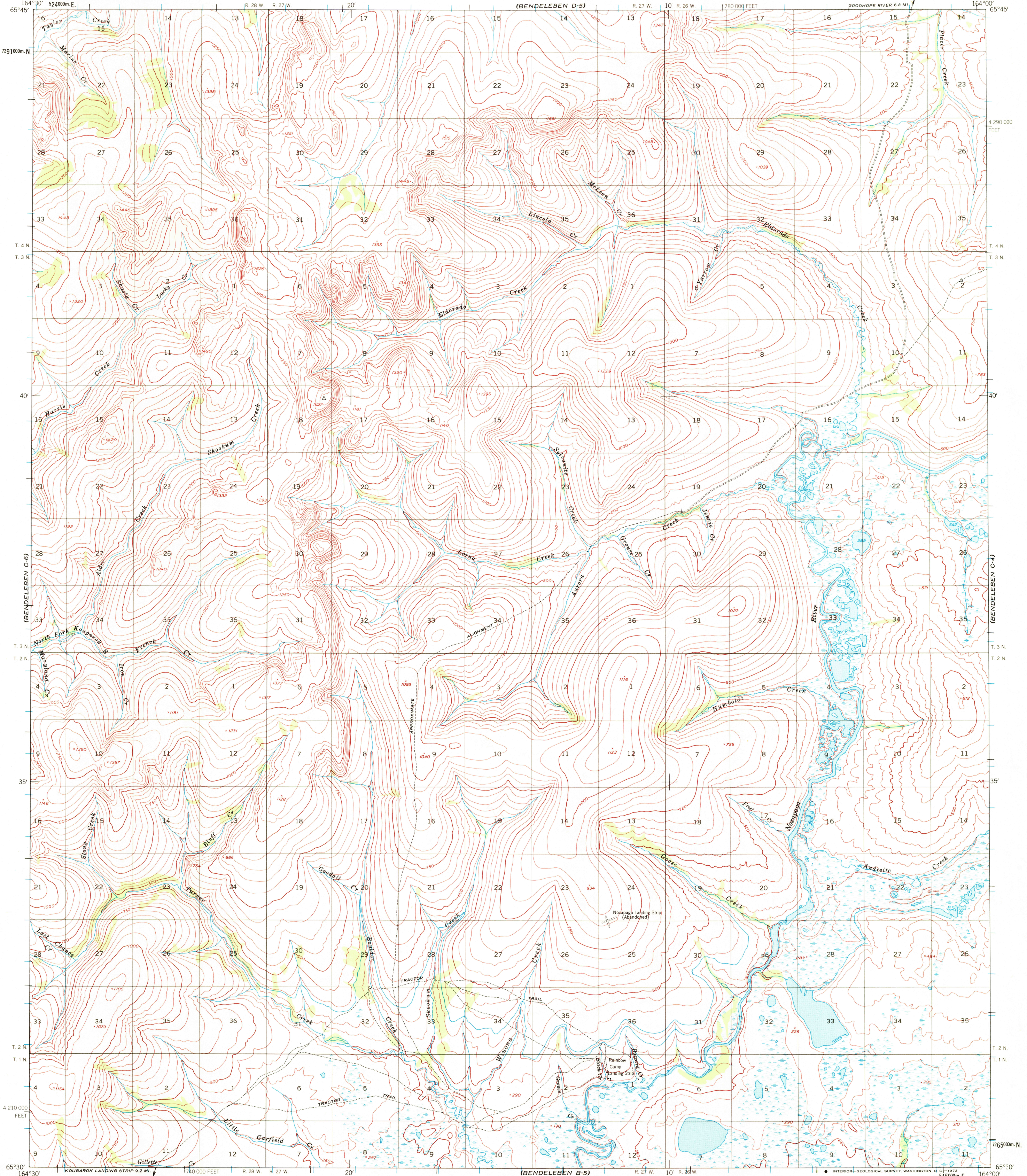
UNITED STATES  
DEPARTMENT OF THE ARMY  
CORPS OF ENGINEERS

BENDELEBEN (C-5) QUADRANGLE  
ALASKA  
1:63 360 SERIES (TOPOGRAPHIC)

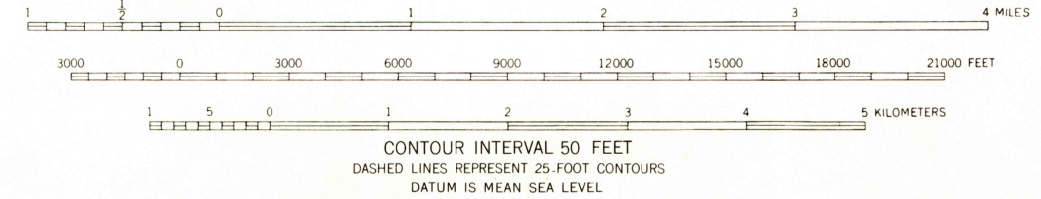
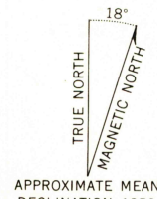
(BENDELEBEN D-4)

(BENDELEBEN C-4)

(BENDELEBEN B-4)



Maped by the Army Map Service  
Published for civil use by the Geological Survey  
Control by USGS, USC&GS, and USCE  
Topography by photogrammetric methods from aerial photographs  
taken 1950. Map not field checked  
Universal Transverse Mercator projection. 1927 North American datum  
10,000-foot grid based on Alaska coordinate system, zone 8  
1000 meter Universal Transverse Mercator grid ticks,  
zone 3, shown in blue  
Land lines represent unsurveyed and unmarked locations  
predetermined by the Bureau of Land Management  
Folio K-6, Kotel River Meridian



ROAD CLASSIFICATION  
Unimproved dirt =-----

FOR SALE BY U. S. GEOLOGICAL SURVEY  
FAIRBANKS, ALASKA 99701, DENVER, COLORADO 80225, OR WASHINGTON, D. C. 20242  
A FOLDER DESCRIBING TOPOGRAPHIC MAPS AND SYMBOLS IS AVAILABLE ON REQUEST

BENDELEBEN (C-5), ALASKA  
N6530-W16400/15x30

1950  
MINOR REVISIONS 1971

1815  
NOV 8 1972

USGS  
HISTORICAL FILE  
FUNCTION