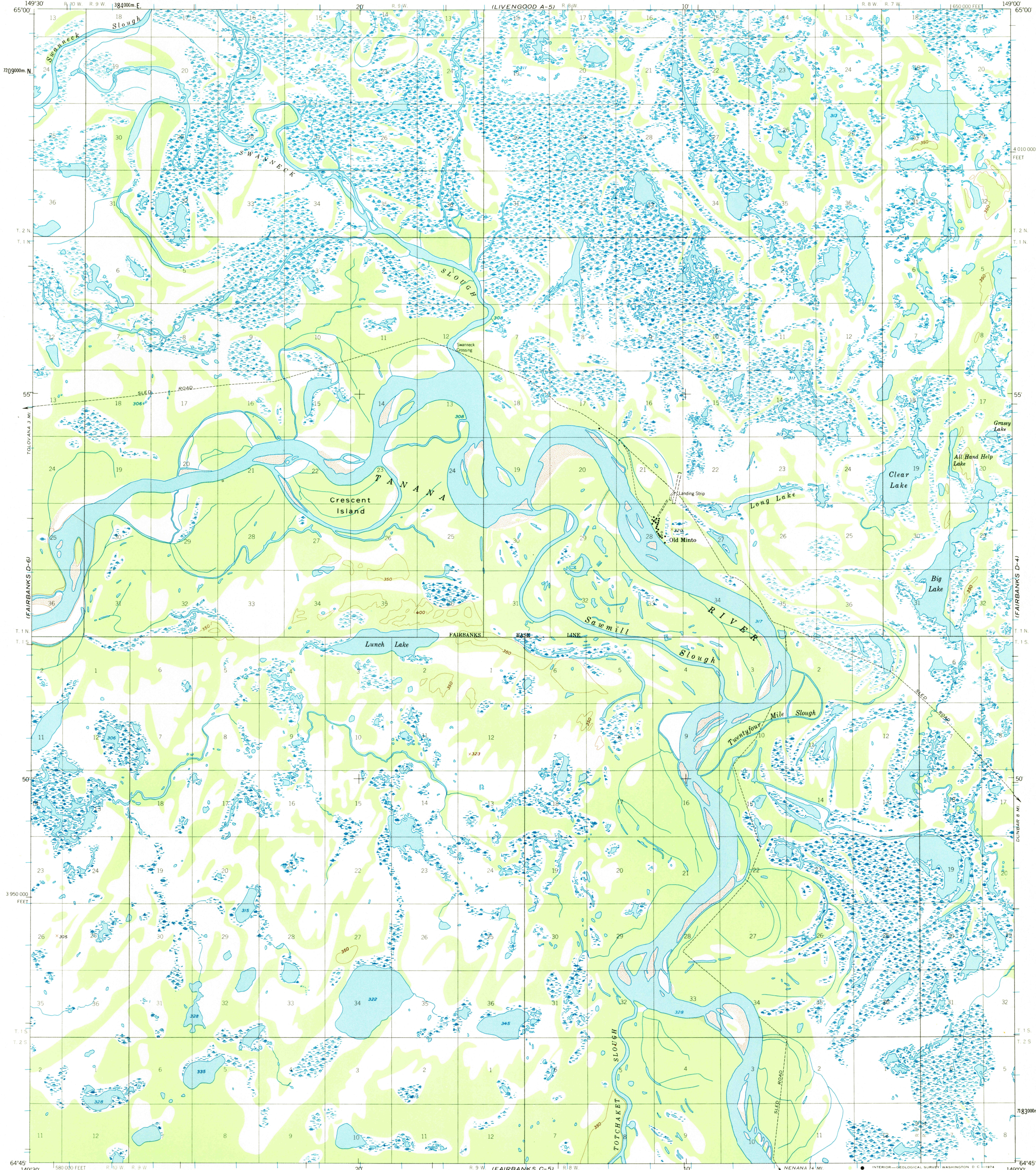
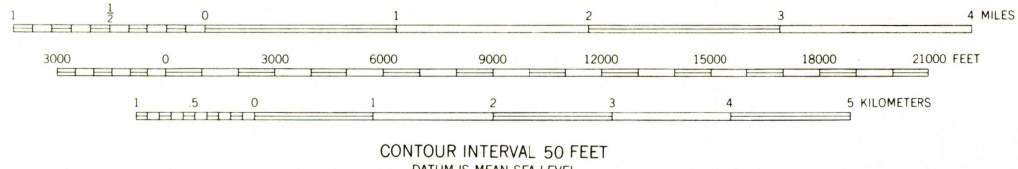
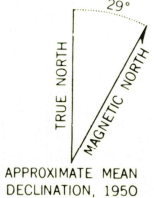


UNITED STATES  
DEPARTMENT OF THE INTERIOR  
GEOLOGICAL SURVEY

FAIRBANKS (D-5) QUADRANGLE  
ALASKA  
1:63 360 SERIES (TOPOGRAPHIC)



Mapped, edited, and published by the Geological Survey  
Control by USGS  
Topography by photogrammetric methods from aerial photographs  
taken 1949, field annotated 1950. Map not field checked  
Universal Transverse Mercator projection, 1927 North American Datum  
10,000-foot grid based on Alaska coordinate system, zone 4  
1000-meter Universal Transverse Mercator grid ticks,  
zone 6, shown in blue  
Land lines represent unsurveyed and unmarked locations  
predetermined by the Bureau of Land Management  
Folios F-6 and F-10, Fairbanks Meridian  
Swamps, as portrayed, indicate only the wetter areas,  
usually of low relief, as interpreted from aerial photographs



FOR SALE BY U. S. GEOLOGICAL SURVEY  
FAIRBANKS, ALASKA 99701, DENVER, COLORADO 80225 OR WASHINGTON, D. C. 20242  
A FOLDER DESCRIBING TOPOGRAPHIC MAPS AND SYMBOLS IS AVAILABLE ON REQUEST



ROAD CLASSIFICATION  
Unimproved dirt .....

JAN 07 1974

FAIRBANKS (D-5), ALASKA  
N6445-W14900/15X30

1950  
MINOR REVISIONS 1963

USGS  
Historical File  
Topographic Division

1965