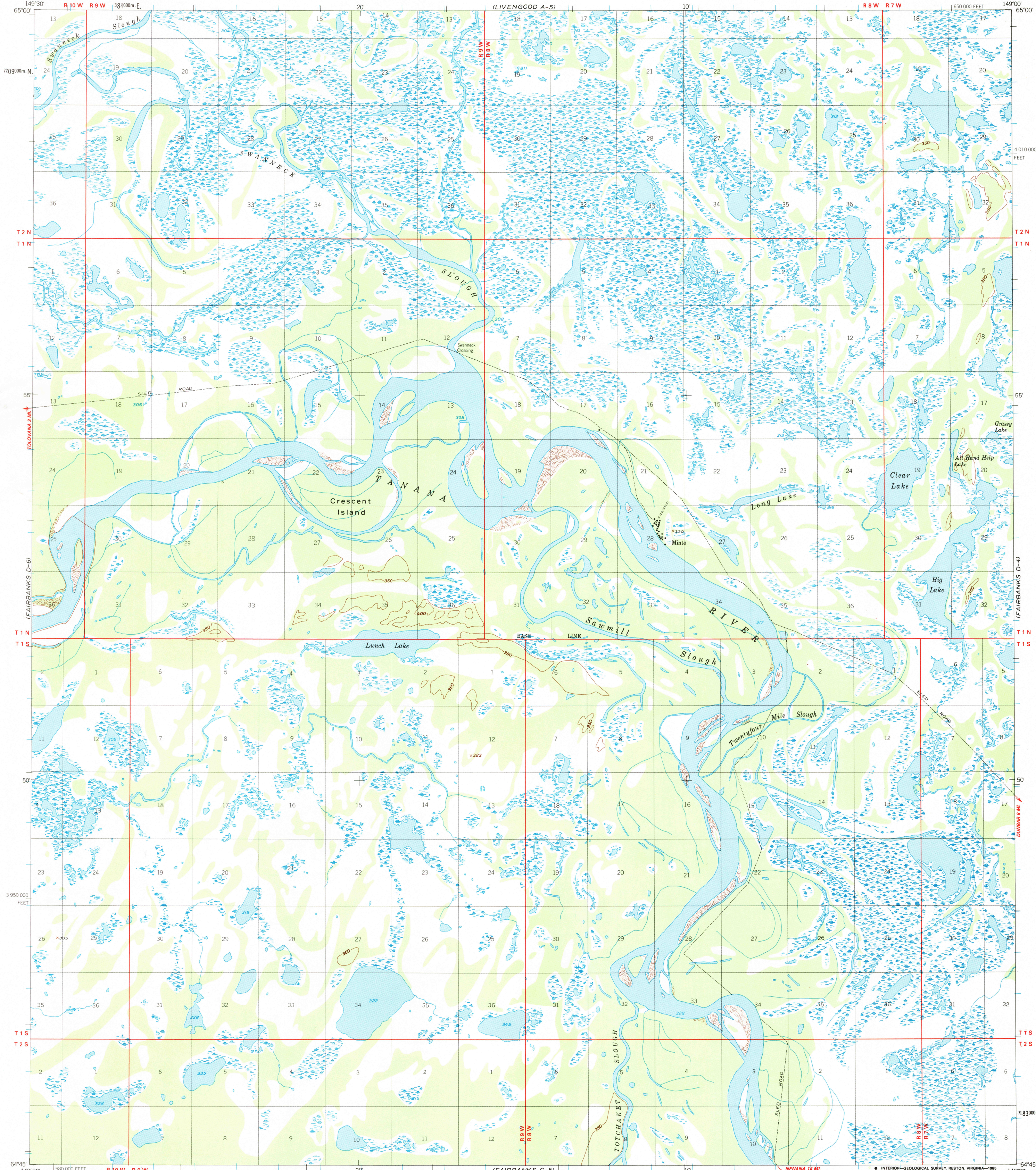
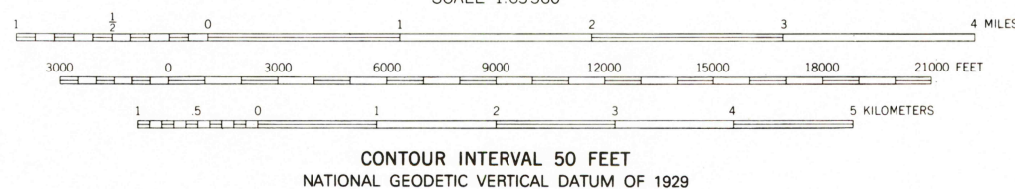
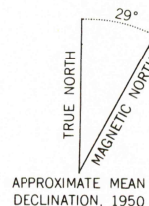


UNITED STATES
DEPARTMENT OF THE INTERIOR
GEOLOGICAL SURVEY

FAIRBANKS (D-5) QUADRANGLE
ALASKA
1:63 360 SERIES (TOPOGRAPHIC)



Mapped, edited, and published by the Geological Survey
Control by USGS
Topography by photogrammetric methods from aerial photographs
taken 1949, field annotated 1950. Map not field checked.
Projection and 1000-meter grid ticks shown in blue:
Universal Transverse Mercator, zone 6
10,000-foot grid ticks based on Alaska coordinate
system, zone 4. 1927 North American Datum
To place on the predicted North American Datum 1983 move
the projection lines 53 meters north and 117 meters east
Gray land lines represent unsurveyed and unmarked locations
predetermined by the Bureau of Land Management
Folios F-6 and F-10, Fairbanks Meridian
Swamps, as portrayed, indicate only the wetter areas,
usually of low relief, as interpreted from aerial photographs



CONTOUR INTERVAL 50 FEET
NATIONAL GEODETTIC VERTICAL DATUM OF 1929

FOR SALE BY U. S. GEOLOGICAL SURVEY
FAIRBANKS, ALASKA 99701, DENVER, COLORADO 80225, OR RESTON, VIRGINIA 22092
A FOLDER DESCRIBING TOPOGRAPHIC MAPS AND SYMBOLS IS AVAILABLE ON REQUEST

ROAD CLASSIFICATION
Unimproved dirt



FAIRBANKS (D-5), ALASKA
N6445-W14900/15X30
1950
MINOR REVISION 1985

RETURN TO:
USGS NHD HISTORICAL MAP ARCHIVES