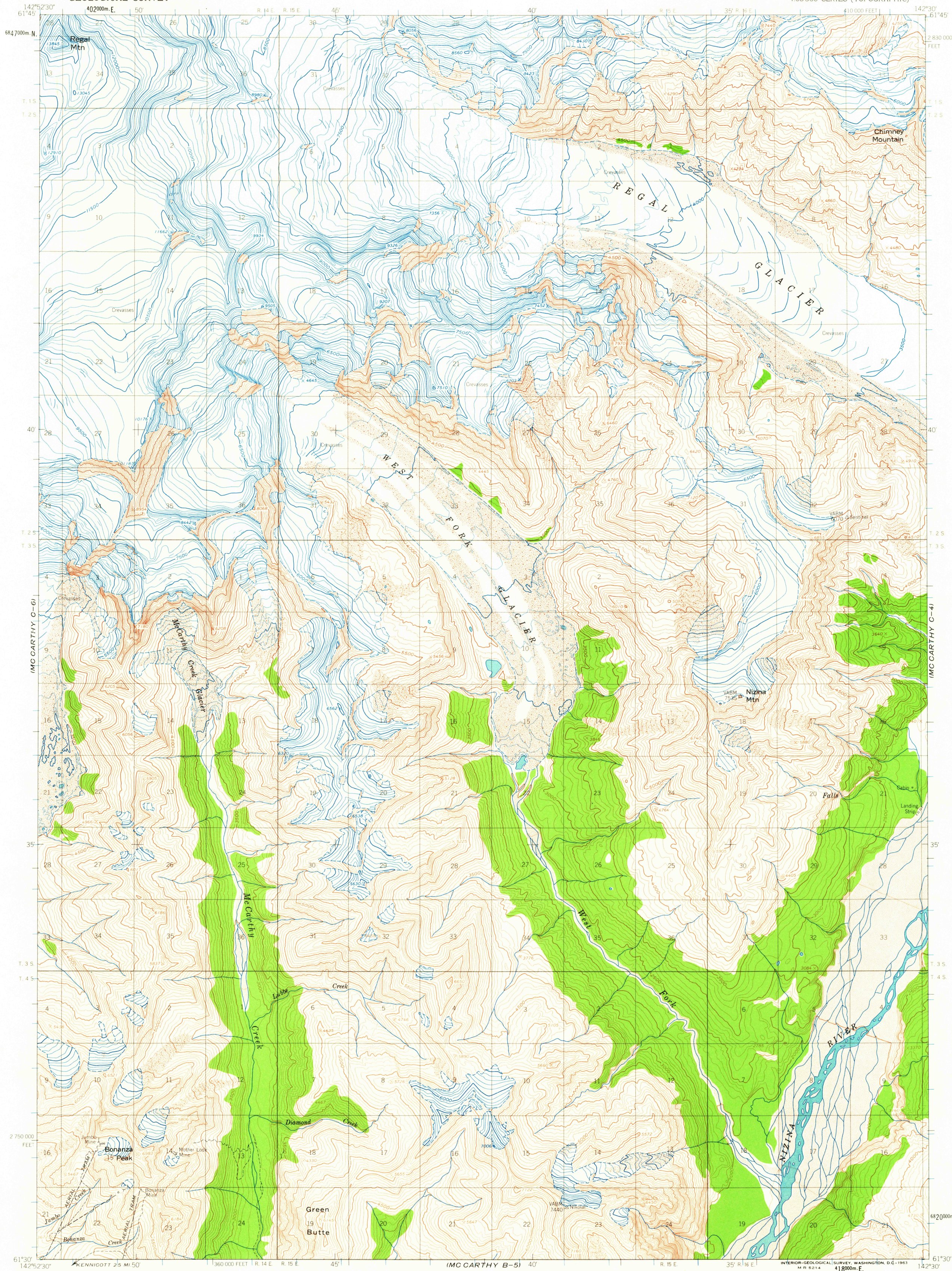


UNITED STATES  
DEPARTMENT OF THE INTERIOR  
GEOLOGICAL SURVEY

MC CARTHY (C-5) QUADRANGLE  
ALASKA  
1:63,360 SERIES (TOPOGRAPHIC)



USGS  
Historical File  
Topographic Division

Mapped, edited, and published by the Geological Survey  
Control by USGS, USC&GS, and International Boundary Commission  
Topography by photogrammetric methods from aerial photographs  
taken 1957, field annotated 1959. Map not field checked  
Universal Transverse Mercator projection, 1927 North American datum  
10,000-foot grid based on Alaska coordinate system, zone 2  
1000-meter Universal Transverse Mercator grid ticks,  
zone 7, shown in blue  
Land lines represent unsurveyed and unmarked locations  
predetermined by the Bureau of Land Management  
Folio CR 6, Copper River Meridian

TRUE NORTH  
MAGNETIC NORTH  
APPROXIMATE MEAN  
DECLINATION, 1959

FOR SALE BY U.S. GEOLOGICAL SURVEY  
FAIRBANKS, ALASKA DENVER 25, COLORADO WASHINGTON 25, D.C.  
A FOLDER DESCRIBING TOPOGRAPHIC MAPS AND SYMBOLS IS AVAILABLE ON REQUEST



MC CARTHY (C-5), ALASKA  
N6130-W14230/15X22.5  
1959

APR - 8 1963

2480