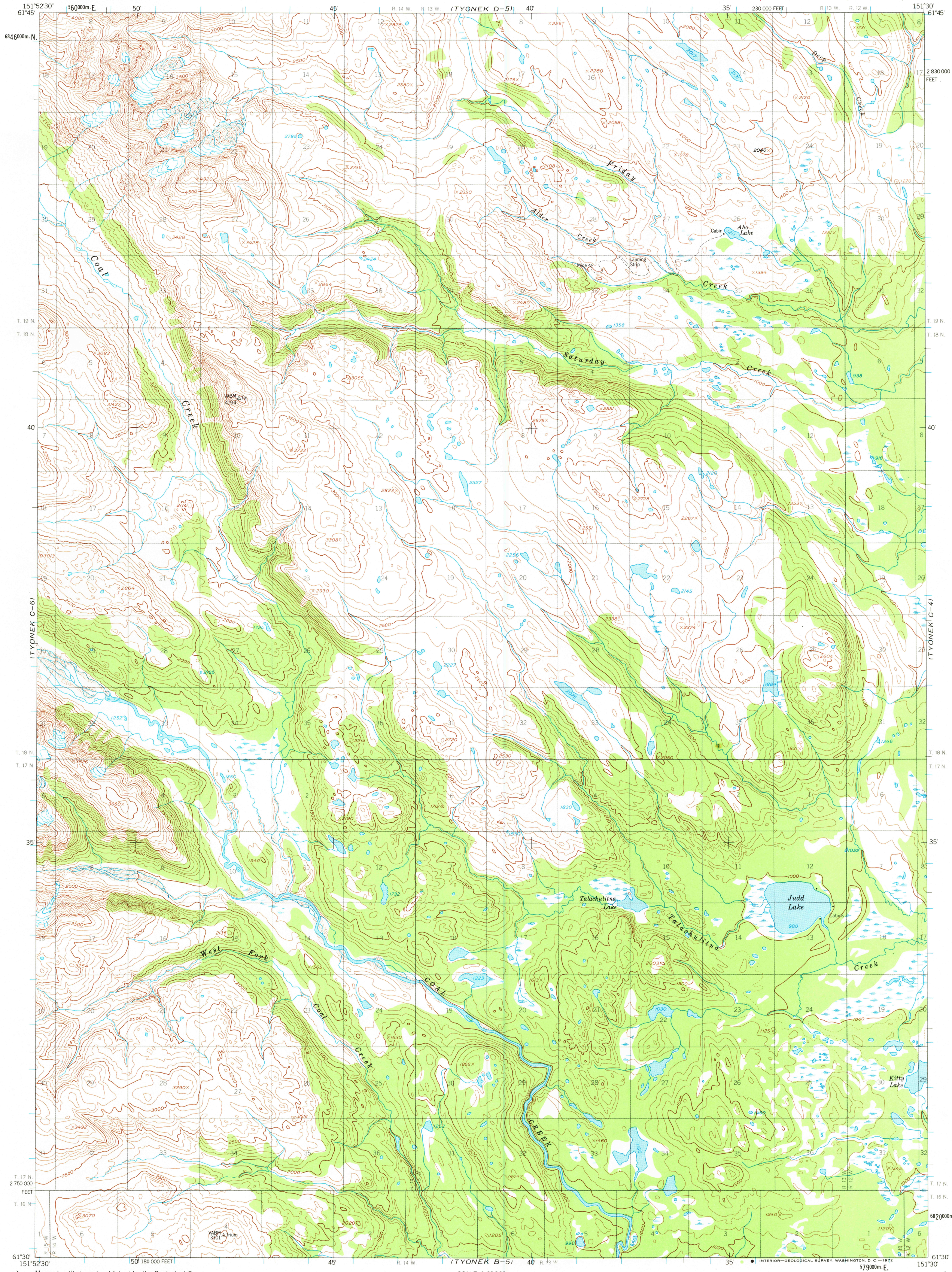


UNITED STATES  
DEPARTMENT OF THE INTERIOR  
GEOLOGICAL SURVEY

TYONEK (C-5) QUADRANGLE  
ALASKA-MATANUSKA-SUSITNA BOROUGH  
1:63 360 SERIES (TOPOGRAPHIC)



Mapped, edited, and published by the Geological Survey

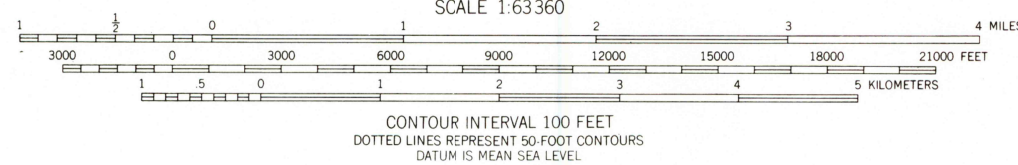
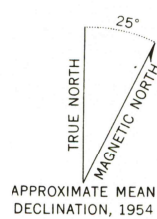
Control by USGS

Topography by photogrammetric methods from aerial  
photographs taken 1952-1953, field annotated 1954  
Map not field checked

Universal Transverse Mercator projection, 1927 North American datum  
10,000-foot grid based on Alaska coordinate system, zone 4  
1000-meter Universal Transverse Mercator grid ticks,  
zone 5, shown in blue

Land lines represent unsurveyed and unmarked locations  
predetermined by the Bureau of Land Management  
Folios S-2 and S-13, Seward Meridian

Swamps, as portrayed, indicate only the wetter areas,  
usually of low relief, as interpreted from aerial photographs



ROAD CLASSIFICATION  
Trails



FOR SALE BY U.S. GEOLOGICAL SURVEY  
FAIRBANKS, ALASKA 99701, DENVER, COLORADO 80225, OR WASHINGTON, D. C. 20242  
A FOLDER DESCRIBING TOPOGRAPHIC MAPS AND SYMBOLS IS AVAILABLE ON REQUEST

TYONEK (C-5), ALASKA  
N6130-W15130/15X22.5

1954  
MINOR REVISIONS 1971

RETURN TO:  
USGS NMD HISTORICAL MAP ARCHIVES