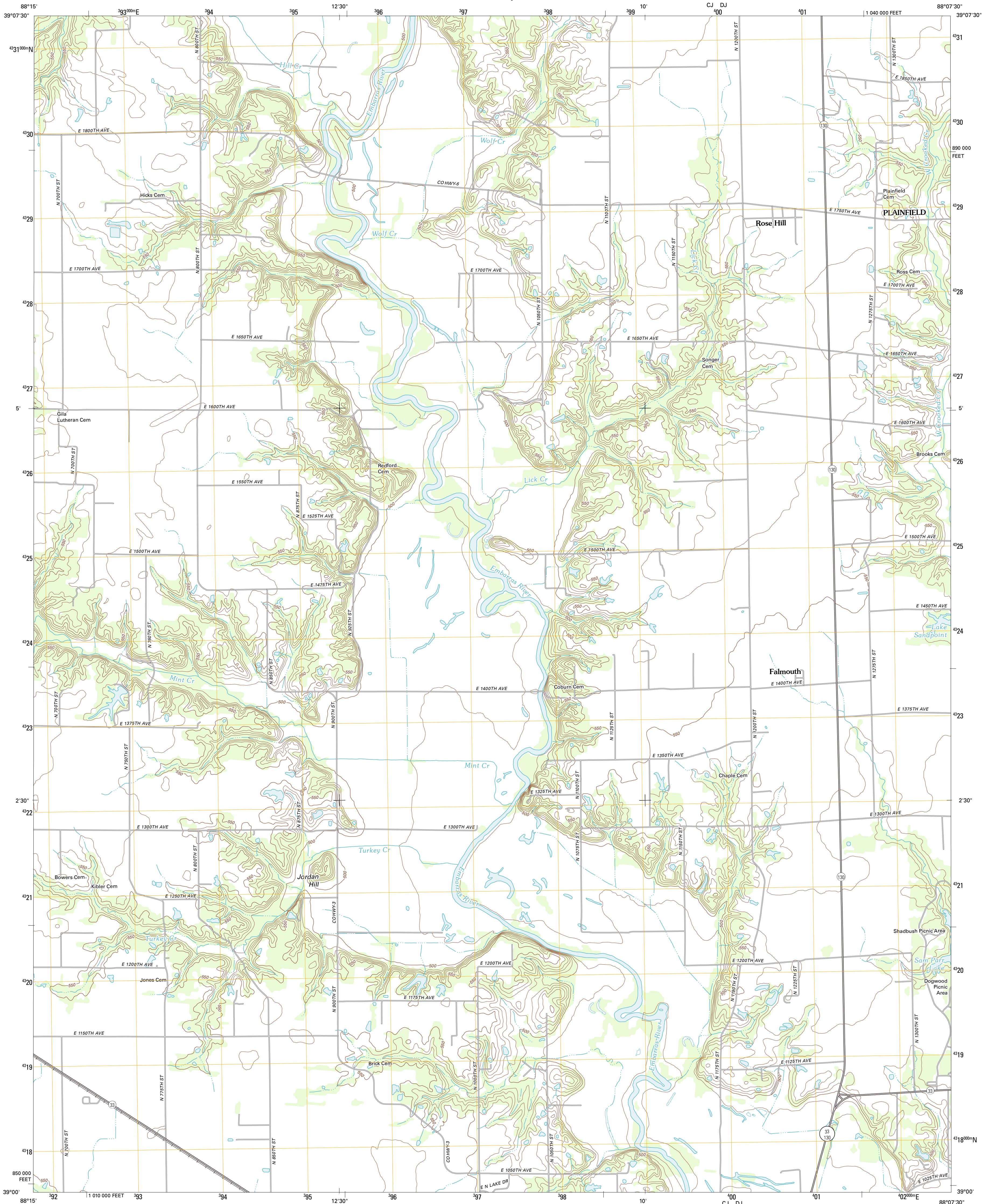




U.S. DEPARTMENT OF THE INTERIOR  
U. S. GEOLOGICAL SURVEY



ROSE HILL QUADRANGLE  
ILLINOIS-JASPER CO.  
7.5-MINUTE SERIES



Produced by the United States Geological Survey  
North American Datum of 1983 (NAD83)  
World Geodetic System of 1984 (WGS84). Projection and  
1 000-meter grid: Universal Transverse Mercator, Zone 16S  
10 000-foot ticks: Illinois Coordinate System of 1983 (east  
zone)

Imagery.....NAIP, August 2011  
Roads.....©2006-2011 TomTom  
Names.....GNIS, 2011  
Hydrography.....National Hydrography Dataset, 2011  
Contours.....National Elevation Dataset, 2008  
Boundaries.....Census, IBWC, IBC, USGS, 1972 - 2010

UTM GRID AND 2012 MAGNETIC NORTH  
DECLINATION AT CENTER OF SHEET

2° 41'  
48 MILS  
19 MILS

U.S. National Grid  
100,000m Square ID  
40  
CJ DJ  
Grid Zone Designation  
16S

SCALE 1:24 000

1 0.5 0 0.5 1 2  
KILOMETERS

1000 500 0 1000 2000  
METERS

1 0 1000 2000 3000 4000 5000 6000 7000 8000 9000 10000  
MILES

FEET

CONTOUR INTERVAL 10 FEET  
NORTH AMERICAN VERTICAL DATUM OF 1988

This map was produced to conform with the  
National Geospatial Program US Topo Product Standard, 2011.  
A metadata file associated with this product is draft version 0.6.3



|          |           |              |
|----------|-----------|--------------|
| Woodbury | Greemp    | Hazel Dell   |
| Wheeler  | Rose Hill | Yale         |
| Latona   | Newton    | Sainte Marie |

ADJOINING 7.5' QUADRANGLES

ROAD CLASSIFICATION

Interstate Route  
US Route  
Ramp

State Route  
Local Road  
4WD

Interstate Route  
US Route  
State Route

ROSE HILL, IL  
2012