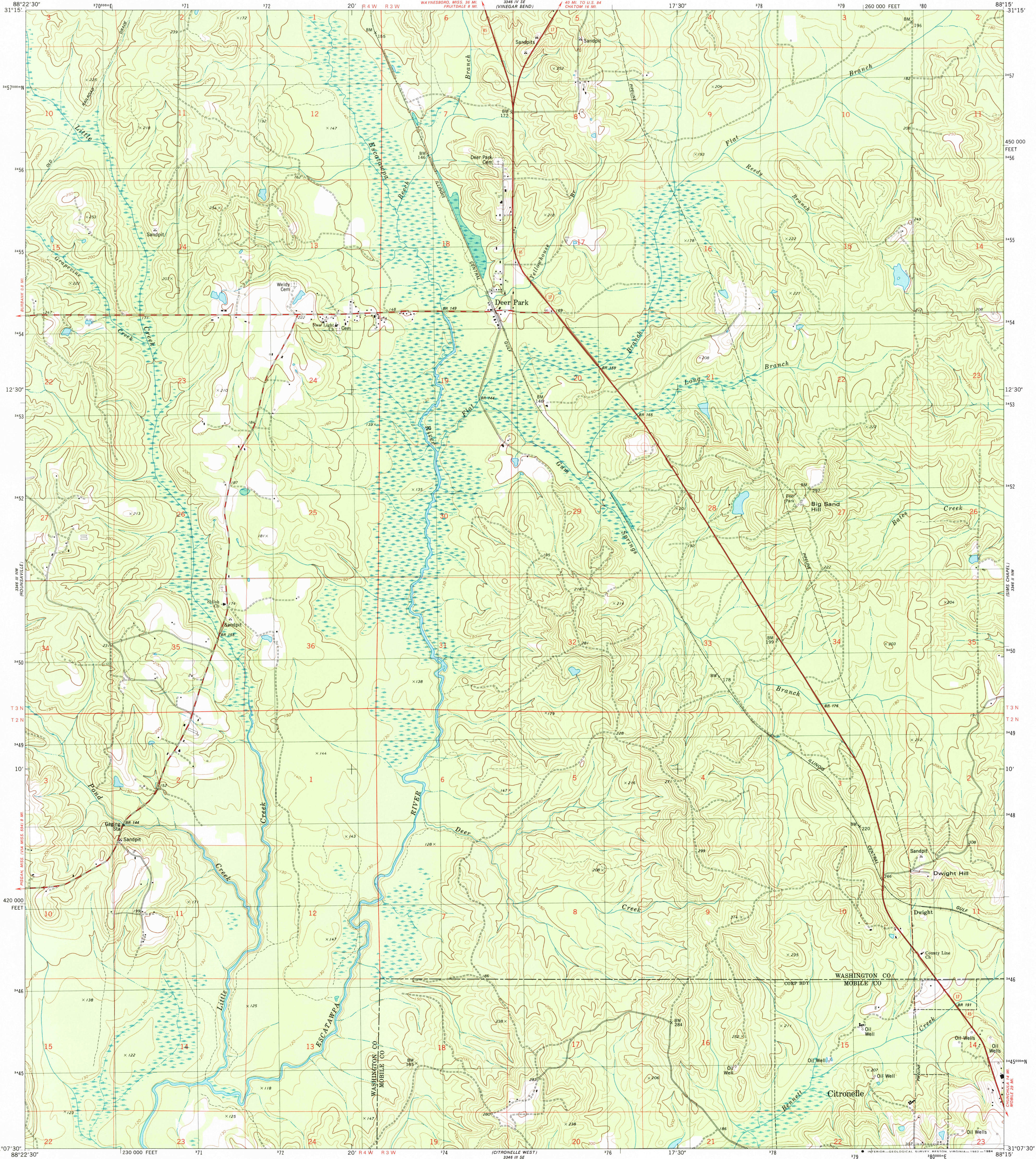
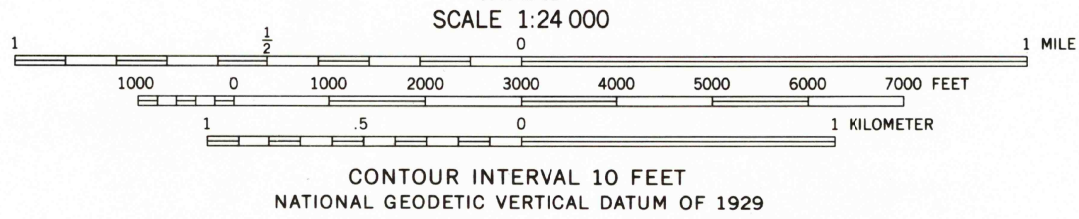
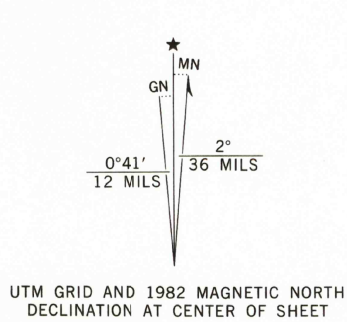


UNITED STATES  
DEPARTMENT OF THE INTERIOR  
GEOLOGICAL SURVEY

DEER PARK QUADRANGLE  
ALABAMA  
7.5 MINUTE SERIES (TOPOGRAPHIC)  
NE/4 DEER PARK 15' QUADRANGLE



Mapped, edited, and published by the Geological Survey  
Control by USGS and NOS/NOAA  
Topography by photogrammetric methods from aerial photographs taken 1976. Field checked 1978. Map edited 1982  
Projection and 10,000-foot grid ticks: Alabama coordinate system, west zone (transverse Mercator)  
1000-meter Universal Transverse Mercator grid, zone 16  
1927 North American Datum  
To place on the predicted North American Datum 1983 move the projection lines 16 meters south and 2 meters east as shown by dashed corner ticks  
Fine red dashed lines indicate selected fence and field lines where generally visible on aerial photographs. This information is unchecked



ROAD CLASSIFICATION  
Primary highway, hard surface  
Secondary highway, hard surface  
Light-duty road, hard or improved surface  
Unimproved road  
Interstate Route  
U. S. Route  
State Route

DEER PARK, ALA.  
NE/4 DEER PARK 15' QUADRANGLE  
N3107.5-W8815/7.5

1982

DMA 3346 III NE-SERIES V844

RETURN TO:  
NHD HISTORICAL MAP ARCHIVES  
USGS NATIONAL CENTER, MS-522  
RESTON, VA 22092

THIS MAP COMPLIES WITH NATIONAL MAP ACCURACY STANDARDS  
FOR SALE BY U. S. GEOLOGICAL SURVEY, RESTON, VIRGINIA 22092  
A FOLDER DESCRIBING TOPOGRAPHIC MAPS AND SYMBOLS IS AVAILABLE ON REQUEST