

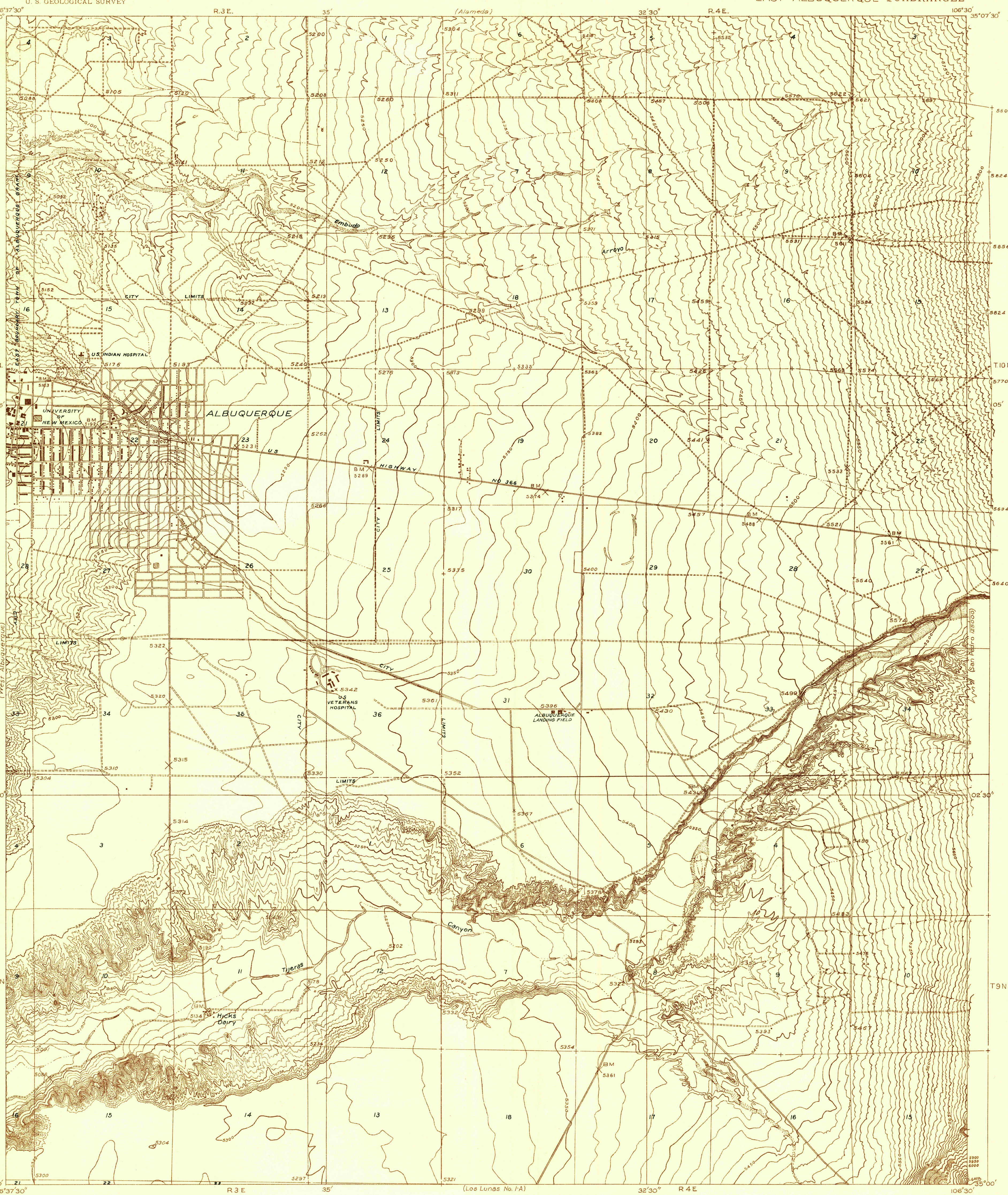
Advance
Subject to

NEW MEXICO
(BERNALILLO COUNTY)
EAST ALBUQUERQUE QUADRANGLE

(San Pedro 125000)

(Grege)

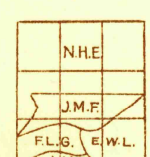
DEPARTMENT OF THE INTERIOR
U. S. GEOLOGICAL SURVEY



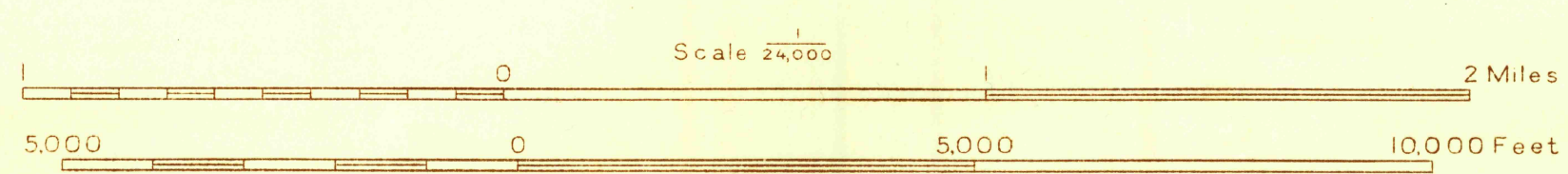
Glenn S. Smith, Division Engineer
Topography by N.H. Epps, E.L. Gregg, E.W. Lighton and J.M. Forgotson

Control by U. S. Geological Survey, U. S. Coast and Geodetic Survey
and U. S. Forest Service

Surveyed in 1934
Surveyed as a County
Emergency Relief project



APPROXIMATE MEAN
DECLINATION, 1954



Contour interval 10 feet
Datum is mean sea level

USGS
Historical File
Topographic Division

EAST ALBUQUERQUE, N.MEX.