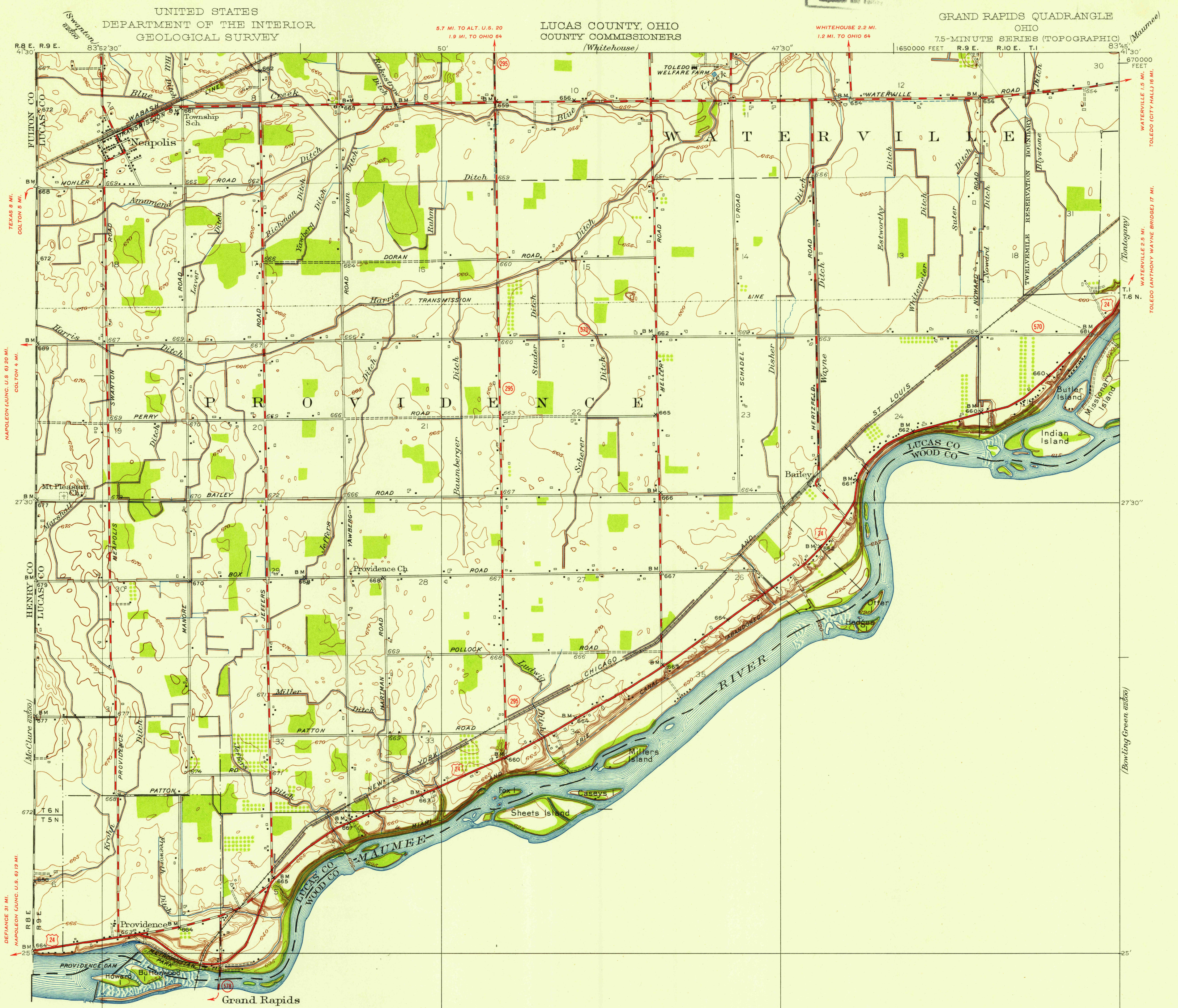
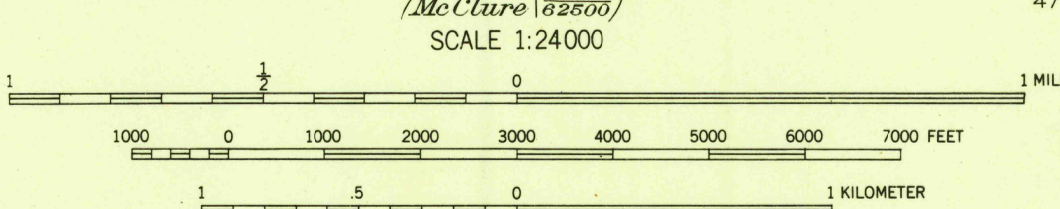


FILE COPY
Inspection and Editing



THIS AREA IS SHOWN ON THE MAP OF MCCLURE
QUADRANGLE, SURVEYED IN 1906-1907, SCALE 1:62,500

Map edited and published by the Geological Survey
Surveyed in 1935. Revised in 1952
Polyconic projection, 1927 North American datum
10000-foot grid based on Ohio coordinate system,
north zone



Contour interval 5 feet
Datum is mean sea level

FOR SALE BY U. S. GEOLOGICAL SURVEY, WASHINGTON 25, D. C.
A FOLDER DESCRIBING TOPOGRAPHIC MAPS AND SYMBOLS IS AVAILABLE ON REQUEST

USGS
Historical File
Topographic Division

ROAD CLASSIFICATION
Heavy-duty... 4 LANE 16 LANE Light-duty...
Medium-duty... 4 LANE 16 LANE Unimproved dirt...
U. S. Route State Route

FILE COPY
Inspection and Editing

GRAND RAPIDS, OHIO
N 41225-W 8345/75

1952

JAN 6 1954