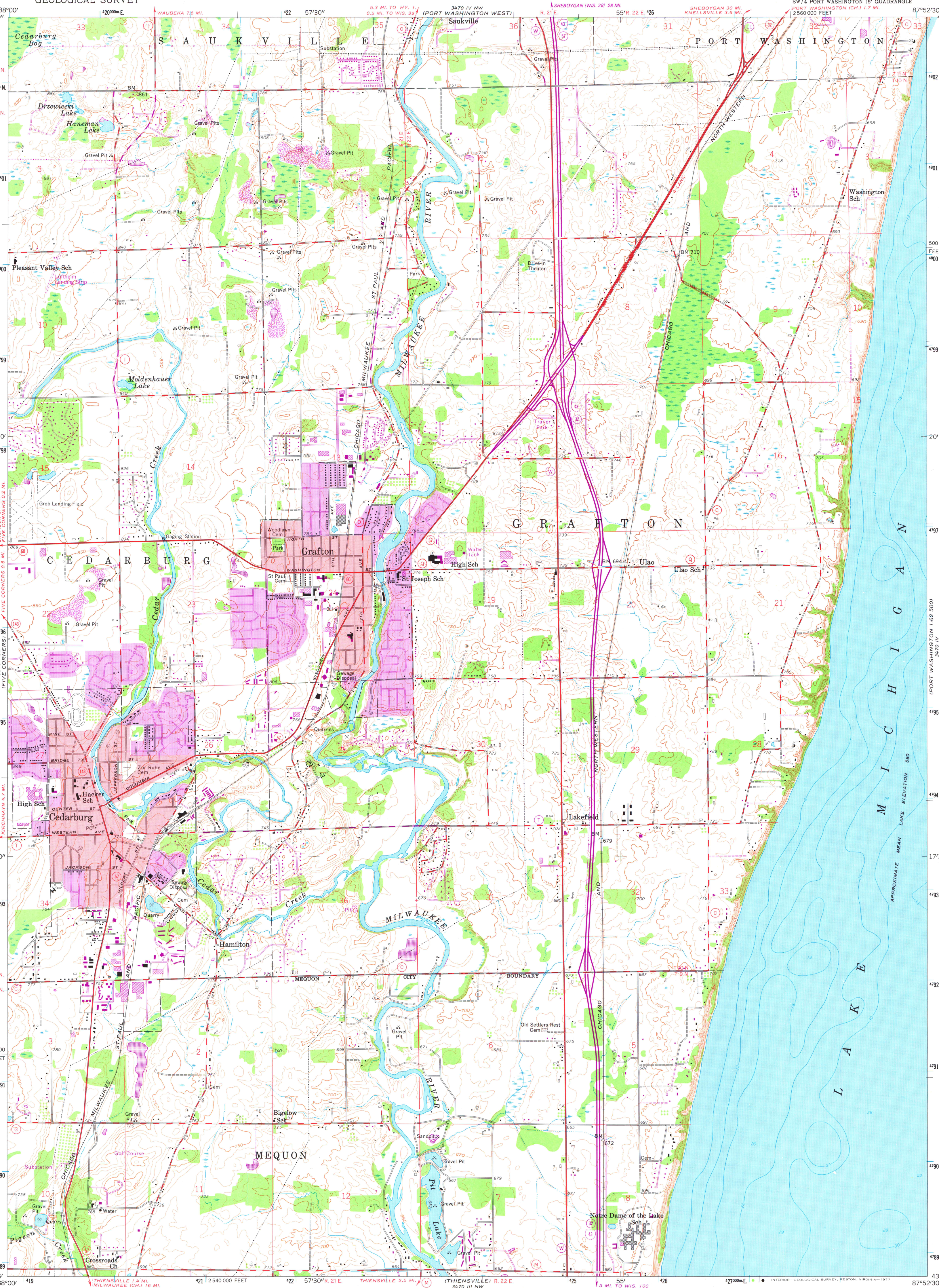


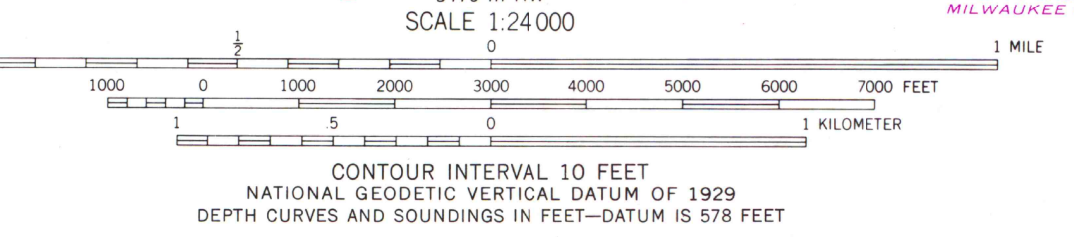
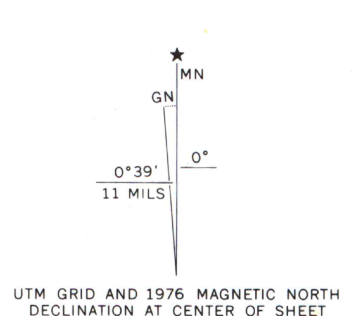
UNITED STATES  
DEPARTMENT OF THE INTERIOR  
GEOLOGICAL SURVEY

CEDARBURG QUADRANGLE  
WISCONSIN—OZAUKEE CO.  
7.5 MINUTE SERIES (TOPOGRAPHIC)  
SW 1/4 PORT WASHINGTON 15' QUADRANGLE  
PORT WASHINGTON 15' QUADRANGLE  
2560 000 FEET



MAP AND AIR PHOTO  
LIBRARY  
NOV 7 - 1978  
University of Wisconsin  
Madison

Maped, edited, and published by the Geological Survey  
Control by USGS and USC&GS  
Topography from aerial photographs by photogrammetric methods  
Aerial photographs taken 1955. Field check 1959  
Hydrography compiled from U.S. Lake Survey chart 74 (1957)  
Polyconic projection. 1927 North American datum  
10,000-foot grid based on Wisconsin coordinate system, south zone  
1000-meter Universal Transverse Mercator grid ticks,  
zone 16, shown in blue  
Red tint indicates areas in which only landmark buildings are shown  
Revisions shown in purple compiled from aerial photographs  
taken 1971 and 1976. This information not field checked  
Purple tint indicates extension of urban areas



ROAD CLASSIFICATION  
Primary highway, hard surface  
Secondary highway, hard surface  
Unimproved road  
Interstate Route  
U. S. Route  
State Route  
Light duty road, hard or improved surface  
Unimproved road

CEDARBURG, WIS.  
SW 1/4 PORT WASHINGTON 15' QUADRANGLE  
N4315—W8752.5/7.5  
1959  
PHOTOREVISED 1971 AND 1976  
AMS 3470 IV SW—SERIES V861

1976  
copy  
1-1