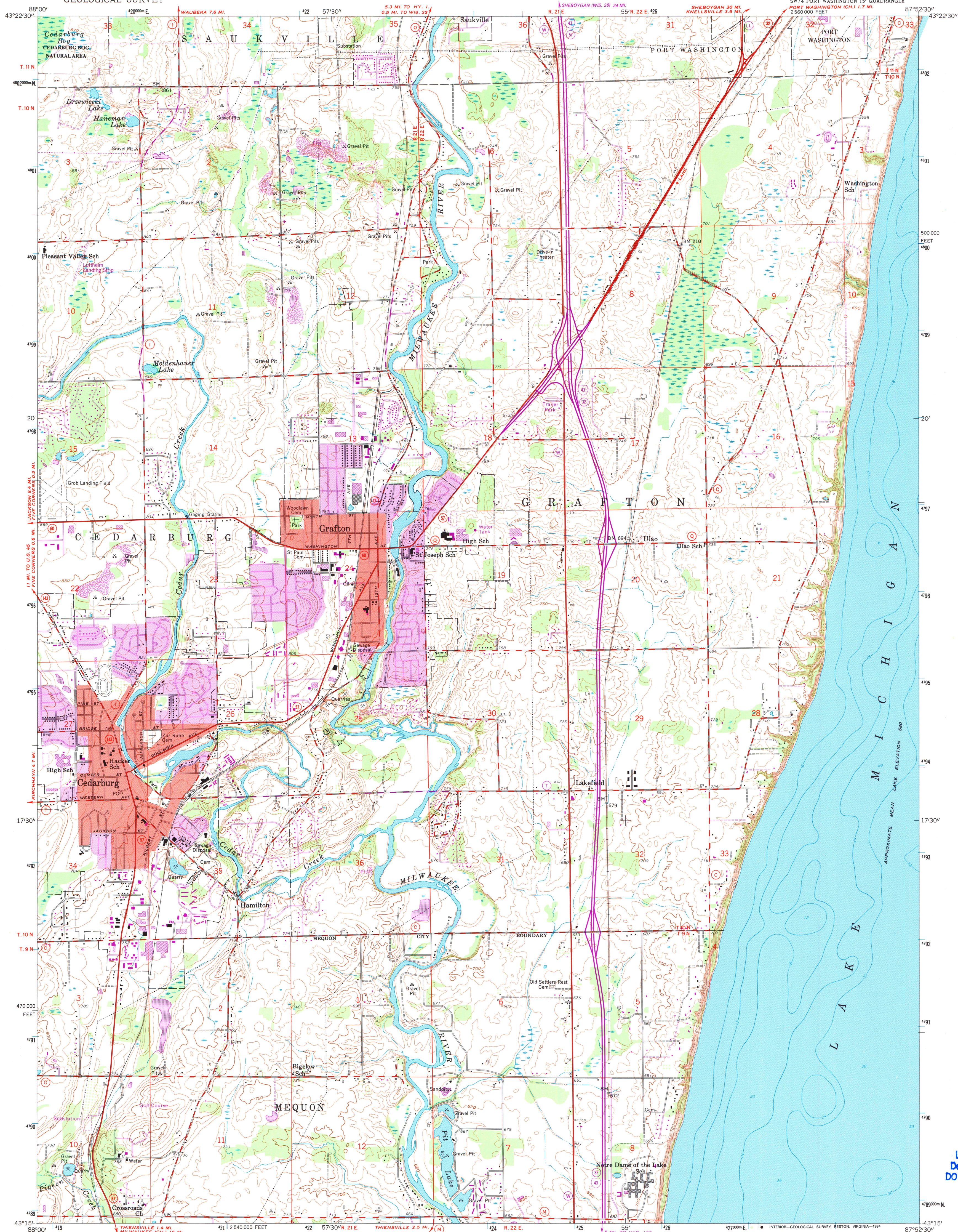


UNITED STATES
DEPARTMENT OF THE INTERIOR
GEOLOGICAL SURVEY

CEDARBURG QUADRANGLE
WISCONSIN—OZAUKEE CO.
7.5 MINUTE SERIES (TOPOGRAPHIC)



Produced by the U. S. Geological Survey
Control by USGS and NOS/NOAA
Topography by photogrammetric methods from aerial photographs
taken 1955. Field checked 1959
Hydrography compiled from U. S. Lake Survey chart 74 (1957)
Projection and 10,000-foot grid ticks: Wisconsin coordinate
system, south zone (Lambert conformal conic)
1000-meter Universal Transverse Mercator grid ticks, zone 16, shown in blue
1927 North American Datum (NAD 27)
North American Datum of 1983 (NAD 83) is shown by dashed corner ticks
The values of the shift between NAD 27 and NAD 83 for 7.5-minute
intersections are given in USGS Bulletin 1875
There may be private inholdings within the boundaries of
the National or State reservations shown on this map
Red tint indicates areas in which only landmark buildings are shown
Photorevised from 1992 source; no major culture or drainage
changes observed. Boundaries and names revised 1994

Revisions shown in purple compiled from aerial photographs
taken 1971 and 1976. This information not field checked
Purple tint indicates extension of urban areas

SCALE 1:24,000
CONTOUR INTERVAL 10 FEET
SEA LEVEL DATUM OF 1929
DEPTH CURVES AND SOUNDINGS IN FEET—DATUM IS 578 FEET

THIS MAP COMPLIES WITH NATIONAL MAP ACCURACY STANDARDS
FOR SALE BY U.S. GEOLOGICAL SURVEY, DENVER, COLORADO 80225, OR RESTON, VIRGINIA 22092
AND WISCONSIN GEOLOGICAL AND NATURAL HISTORY SURVEY, MADISON, WISCONSIN 53706
A FOLDER DESCRIBING TOPOGRAPHIC MAPS AND SYMBOLS IS AVAILABLE ON REQUEST

1	2	3
4	5	6
7	8	

ADJOINING 7.5' QUADRANGLE NAMES

ROAD CLASSIFICATION
Primary highway, hard surface
Secondary highway, hard surface
Interstate Route
U. S. Route
State Route
Light-duty road, hard or improved surface
Unimproved road

CEDARBURG, WIS.
SW 1/4 PORT WASHINGTON 15' QUADRANGLE
43087-C8-TF-024
1959
PHOTOREVISED 1971 AND 1976
MINOR REVISION 1994
DMA 3470 IV SW—SERIES V861

A.H. ROBINSON
MAP LIBRARY
AUG 25 1994
University of Wisconsin
Madison

U.S. Regional
Depository Copy
DO NOT DISCARD

1994
copy
1-1
X