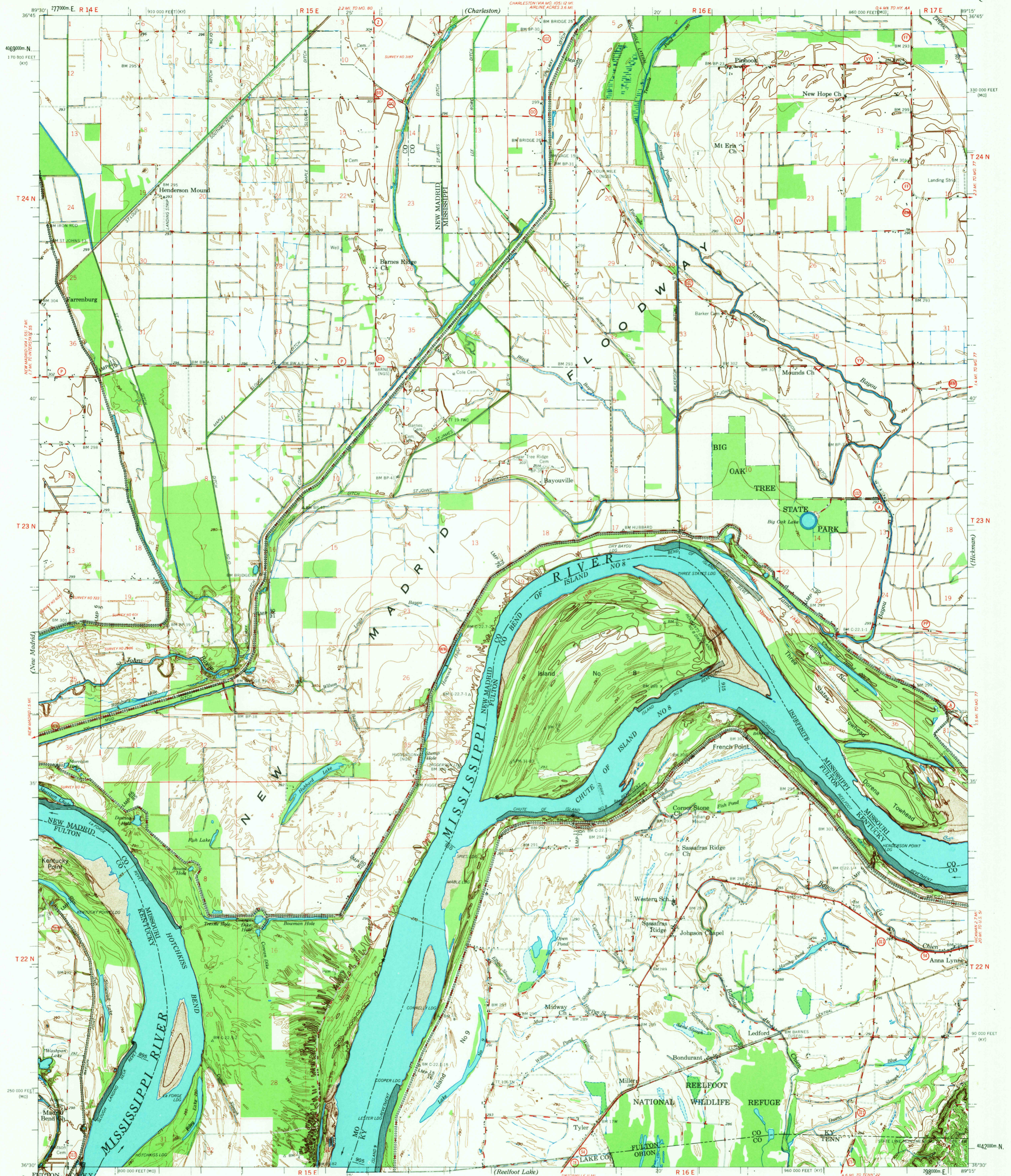


(Skeaton)

U.S. ARMY
CORPS OF ENGINEERS

BAYOUVILLE QUADRANGLE
MO.-KY.-TENN.

(Wickliffe)



Mapped, edited and published under the direction of the President, Mississippi River Commission, by the U.S. Army Engineer District, Memphis, Corps of Engineers.
Compiled in 1971 from U.S.G.S. 7.5 minute 1969 quadrangles. Henderson Mound, Bayouville, Hubbard Lake and Bonduant. Scale 1:24,000.
Planimetry by photogrammetric methods from aerial photographs taken 1950-1967
Topography by planimetric surveys 1951-1969. Field checked 1969
Control by National Geodetic Survey, U.S. Geological Survey and the U.S. Army Engineer District, Memphis, Corps of Engineers.
Polyconic Projection 1927 North American Datum.
Descriptions, elevations and Geodetic positions of permanent survey marks may be obtained from the U.S. Army Engineer District, Memphis, Corps of Engineers, Memphis, Tennessee.
Political boundaries are shown according to best available information.
Work under Flood Control Act shown as of 1971
This map complies with National Map Accuracy Standards.

Scale 1:62,500
0 1 2 3 4 Miles
0 3000 6000 9000 12000 15000 18000 21000 Feet
0 1 2 3 4 5 Kilometers
Datum is Mean Sea Level
ONE THOUSAND METER UNIVERSAL TRANSVERSE MERCATOR GRID, ZONE 16, IS INDICATED BY TICKS OUTSIDE OF THE NEATLINE.
TEN THOUSAND FOOT MISSOURI STATE GRID, EAST ZONE, IS INDICATED BY DASH DOT DASH TICKS OUTSIDE OF THE NEATLINE.
TEN THOUSAND FOOT KENTUCKY STATE GRID, SOUTH ZONE, IS INDICATED BY DOTTED TICKS OUTSIDE OF THE NEATLINE.
Additional copies may be procured from
U.S. Army Engineer District, Vicksburg, Corps of Engineers,
Vicksburg, Mississippi, or
U.S. Army Engineer District, Memphis, Corps of Engineers,
Memphis, Tennessee
50 cents per copy.

LEGEND
Levee
Secondary Levee
Retard and Dikes
Revetment
Levee Mile Post
Levee Station
Towhead
Gaging Station
ROAD DATA 1969
In developed areas only through roads are classified
Hard surface, heavy duty
Hard surface, medium duty
Loose surface, graded and drained,
or narrow hard surface road
Improved dirt road or street
Unimproved dirt road, trail
Interstate Route
U.S. Route
State Route
This area is also covered by U.S.G.S. 7.5 minute quadrangles, Henderson Mound, Bayouville, Hubbard Lake and Bonduant. Scale 1:24,000
BAYOUVILLE, MO.-KY.-TENN.
Edition of 1972
N3630-8915/15