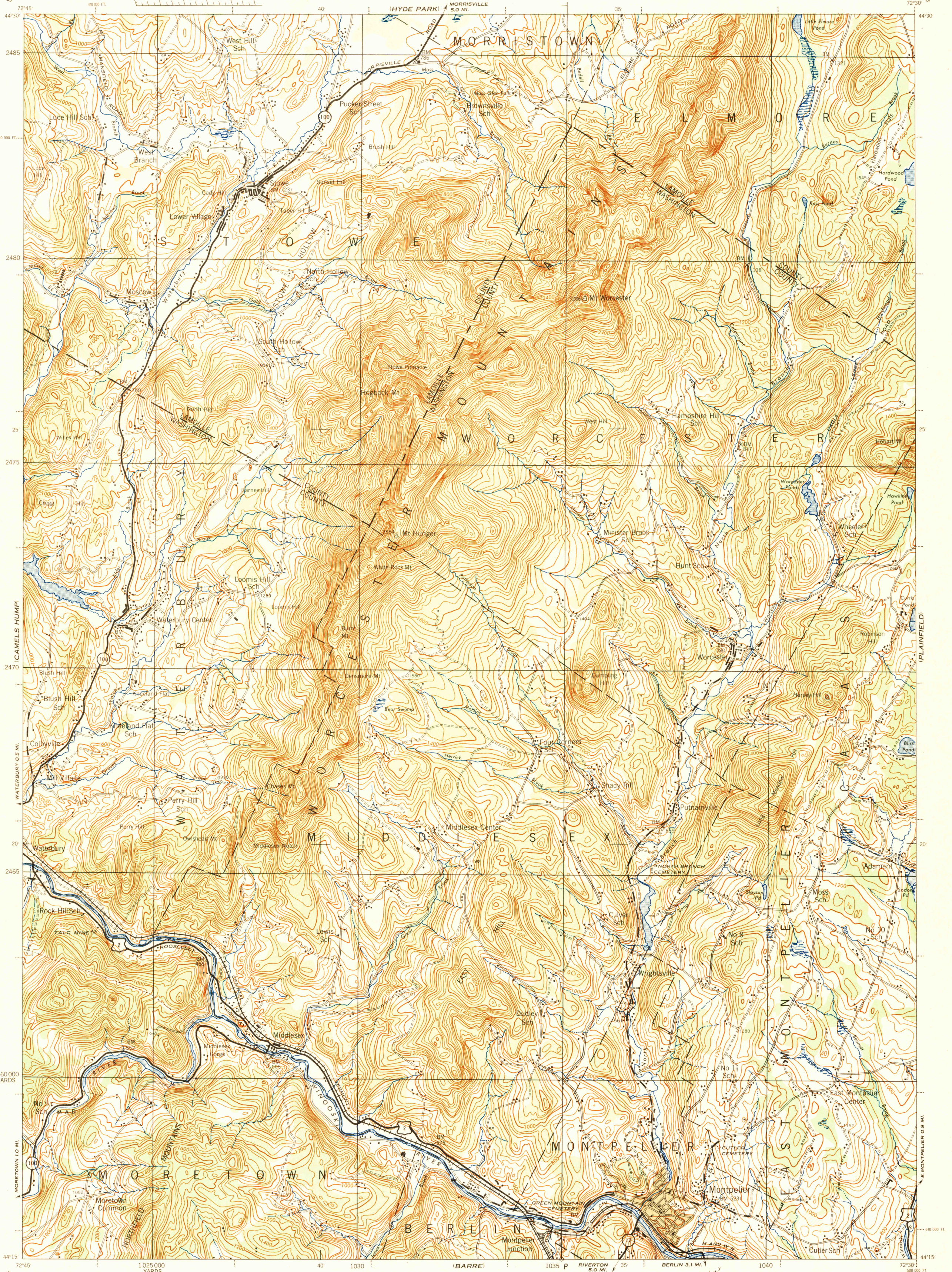


VERMONT 1:62,500

WAR DEPARTMENT  
CORPS OF ENGINEERS, U. S. ARMY

FIRST EDITION-AMS 1

MONTPELIER QUADRANGLE  
15 MINUTE SERIES



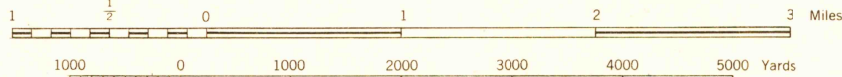
First Edition (AMS 1) 1944.

Prepared under the direction of the Chief of Engineers, U. S. Army, by the  
Army Map Service (AMS), U. S. Army, Washington, D. C., 1944.  
Based on U.S.G.S. quadrangle, Montpelier, 1:62,500 (1921).  
Control by U.S. Geological Survey.  
Surveyed in cooperation with the State of Vermont, 1919.  
Revised from controlled mosaic (L.S.) Detroit, Michigan.  
Aerial Photography by the U. S. Army Air Forces, Oct. 1941.  
Polyconic Projection, North American Datum.

ROAD CLASSIFICATION 1943

Dependable hard surface, heavy-duty road. Loose-surface graded, dry weather road. U.S. Route. Secondary, hard surface, all-weather road. Dirt road. State Route. More than two lanes indicated by note along road with tick at point of change. 3 LANE 1.4 LANE

Scale 1:62,500



CONTOUR INTERVAL 40 FEET  
DATUM IS MEAN SEA LEVEL

FIVE THOUSAND YARD GRID COMPUTED FROM GRID SYSTEM FOR PROGRESSIVE MAPS  
IN THE U. S. ZONE. A. U. S. C. & G. S. SPECIAL PUBLICATION NO. 59.  
THE LAST THREE DIGITS OF THE GRID NUMBERS ARE OMITTED.  
VERMONT STATE GRID ZONE IS INDICATED BY DOTTED TICKS  
OUTSIDE THE NEAT LINE AT 10,000 FOOT INTERVALS.

NOTE: OFFICERS USING THIS MAP WILL MARK HEREON CORRECTIONS AND ADDITIONS WHICH COME  
TO THEIR ATTENTION AND MAIL THEM TO THE CHIEF OF ENGINEERS, WASHINGTON, D. C.

LEGEND

BRUSH

MONTPELIER, VT.  
N4415W7230/15