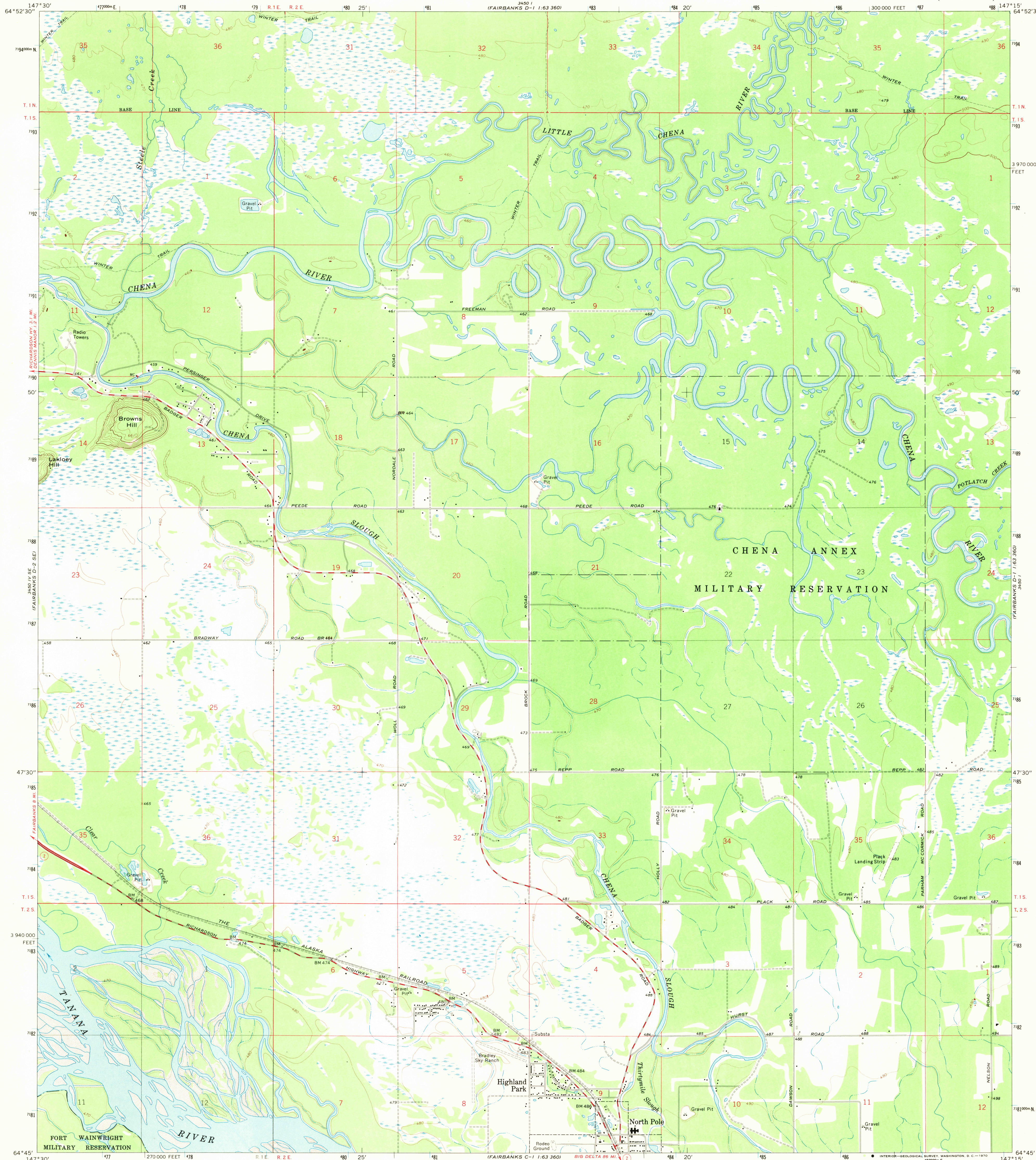


UNITED STATES  
DEPARTMENT OF THE INTERIOR  
GEOLOGICAL SURVEY

FAIRBANKS D-1 SW QUADRANGLE  
ALASKA-NORTH STAR BOROUGH  
1:24 000 SERIES (TOPOGRAPHIC)



Mapped, edited, and published by the Geological Survey

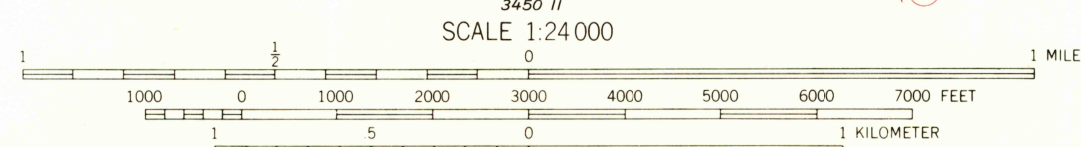
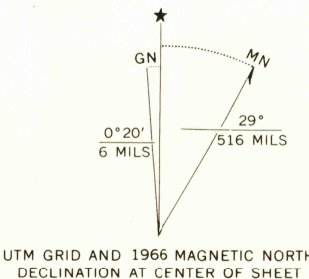
Control by USGS, USC&GS, and USCE

Topography by photogrammetric methods from aerial photographs taken 1966. Field checked 1966

Universal Transverse Mercator projection. 1927 North American datum  
10,000-foot grid based on Alaska coordinate system, zone 3  
1000-meter Universal Transverse Mercator grid ticks, zone 6, shown in blue

Gray land lines represent unsurveyed and unmarked locations predetermined by the Bureau of Land Management  
Folios F-7 and F-9, Fairbanks Meridian

Swamps, as portrayed, indicate only the wetter areas, usually of low relief, as interpreted from aerial photographs



CONTOUR INTERVAL 20 FEET  
DOTTED LINES REPRESENT 10-FOOT CONTOURS  
DATUM IS MEAN SEA LEVEL

THIS MAP COMPLIES WITH NATIONAL MAP ACCURACY STANDARDS

FOR SALE BY U. S. GEOLOGICAL SURVEY  
FAIRBANKS, ALASKA 99701, DENVER, COLORADO 80225, OR WASHINGTON, D. C. 20242  
A FOLDER DESCRIBING TOPOGRAPHIC MAPS AND SYMBOLS IS AVAILABLE ON REQUEST



U.S.G.S.  
FILE COPY  
TOPOGRAPHIC DIVISION

ROAD CLASSIFICATION  
Heavy-duty ——— Light-duty ———  
Medium-duty ——— Unimproved dirt ——— USGS  
State Route ——— Historical File  
Topographic Division

FAIRBANKS D-1 SW, ALASKA

N6445-W14715/7.5 X 15

1966

AMS 3450 I SW-SERIES Q801

MAR 5 1970