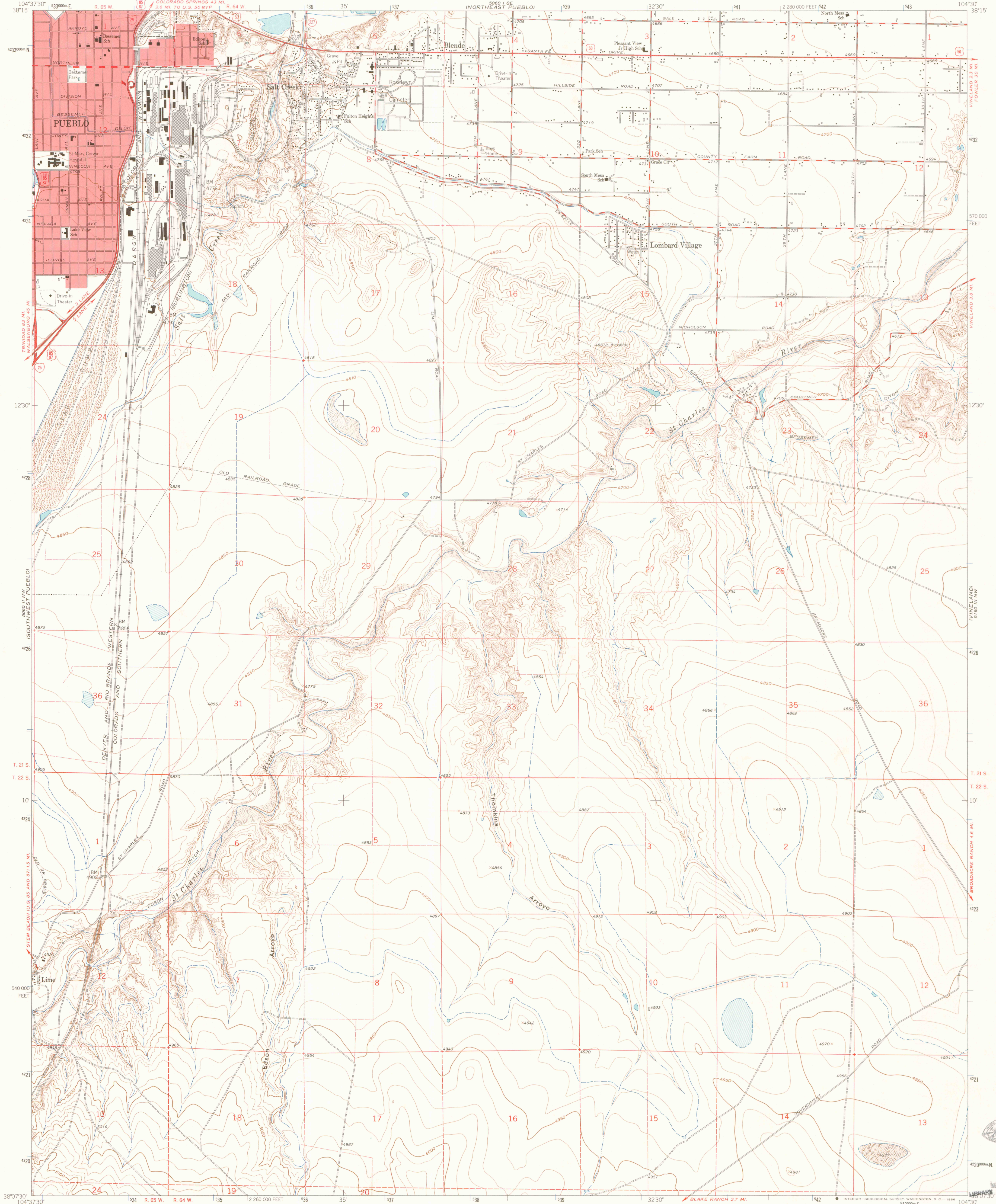


UNITED STATES
DEPARTMENT OF THE INTERIOR
GEOLOGICAL SURVEY

SOUTHEAST PUEBLO QUADRANGLE
COLORADO-PUEBLO CO.
7.5 MINUTE SERIES (TOPOGRAPHIC)



Mapped, edited, and published by the Geological Survey

Control by USGS and USC&GS

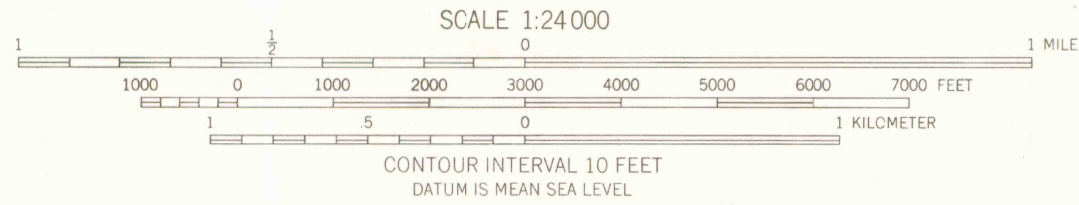
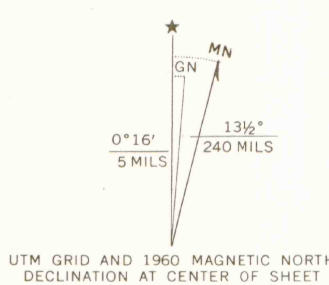
Topography by photogrammetric methods from aerial photographs taken 1954 and 1957. Field checked 1960

Polyconic projection. 1927 North American datum. 10,000-foot grid based on Colorado coordinate system, south zone

1000 meter Universal Transverse Mercator grid ticks, zone 13, shown in blue

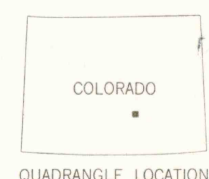
Red tint indicates areas in which only landmark buildings are shown

Fine red dashed lines indicate selected fence and field lines where generally visible on aerial photographs. This information is unchecked



THIS MAP COMPLIES WITH NATIONAL MAP ACCURACY STANDARDS
FOR SALE BY U. S. GEOLOGICAL SURVEY, DENVER, COLORADO 80225 OR WASHINGTON, D. C. 20242
A FOLDER DESCRIBING TOPOGRAPHIC MAPS AND SYMBOLS IS AVAILABLE ON REQUEST

ROAD CLASSIFICATION
Heavy-duty ——— Light-duty ———
Medium-duty ——— Unimproved dirt ———
Interstate Route ——— U.S. Route ——— State Route ———



MAY 1995
MAP ROOM
ARTHUR LAKES LIBRARY
GOLF

SOUTHEAST PUEBLO, COLO.
N3807 5 - W10430 / 7.5

1960
AMS 5080 II NE-SERIES V877



AUG 20 1997

MAP ROOM
ARTHUR LAKES LIBRARY
COLORADO SCHOOL OF MINES

LIBRARY USE ONLY