

77° 37' 30"

43° 15'

43° 15' N

12° 30'

10'

1150000 FEET

43° 07' 30"

77° 37' 30"

UNITED STATES  
DEPARTMENT OF THE INTERIOR  
GEOLOGICAL SURVEY

STATE OF NEW YORK  
DEPARTMENT OF TRANSPORTATION

ROCHESTER EAST QUADRANGLE  
NEW YORK-MONROE CO.  
7.5 MINUTE SERIES (TOPOGRAPHIC)

77° 30'

43° 15'

43° 15' N

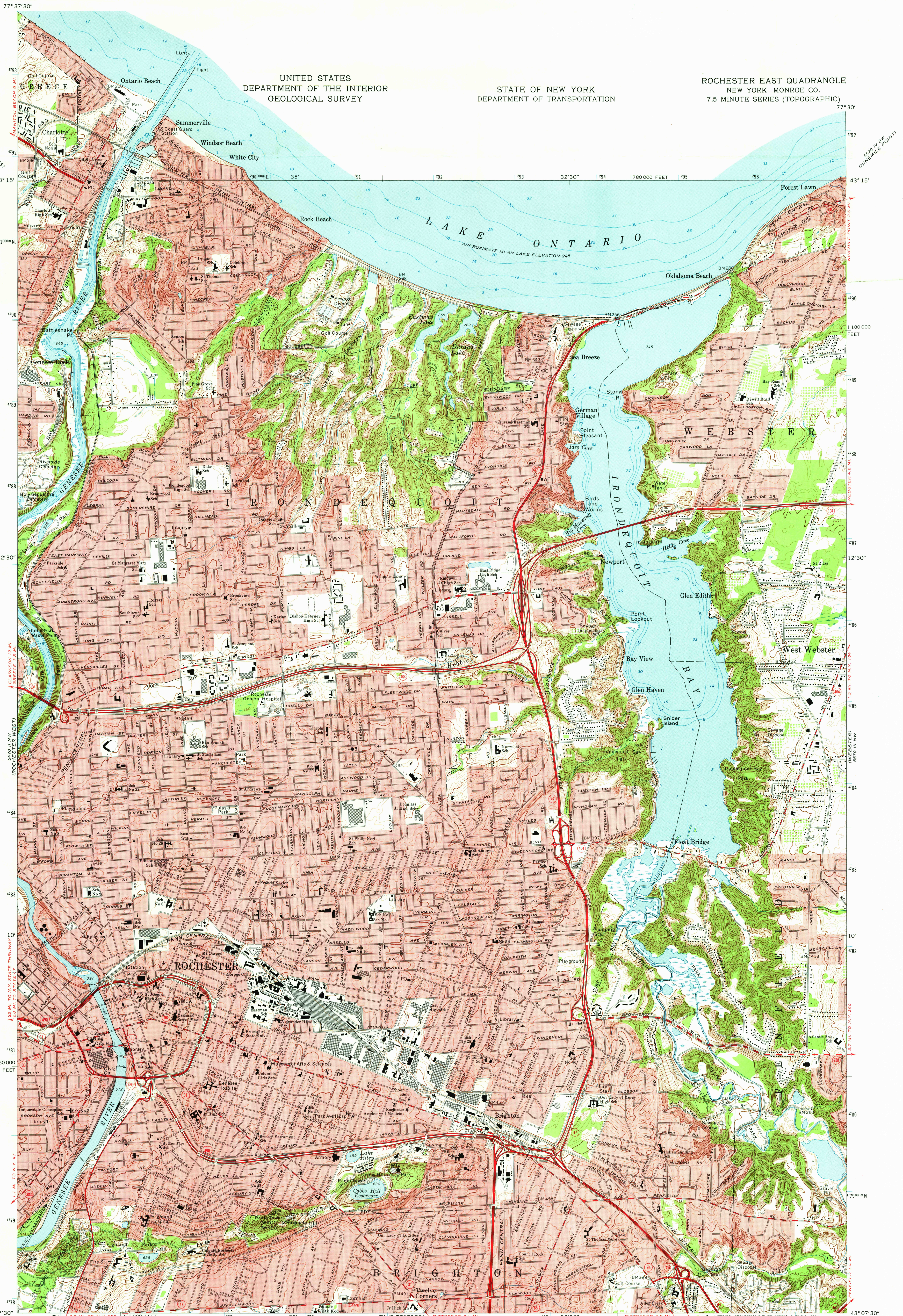
12° 30'

10'

1150000 FEET

43° 07' 30"

77° 30'



Mapped, edited, and published by the Geological Survey

Control by USGS, USC&amp;GS, and New York Geodetic Survey

Topography by photogrammetric methods from aerial

photographs taken 1971. Field checked 1971

Supersedes map dated 1952

Selected hydrographic data compiled from U. S. Lake Charts 23 and 238 (1971)

This information is not intended for navigational purposes

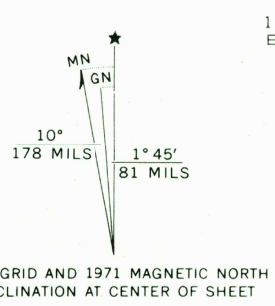
Projection and 10,000-foot grid ticks: New York coordinate

system, west zone (transverse Mercator)

1000-meter Universal Transverse Mercator grid ticks,

zone 18, shown in blue. 1927 North American datum

Red tint indicates areas in which only landmark buildings are shown



CONTOUR INTERVAL 5 FEET  
DATUM IS MEAN SEA LEVEL  
DEPTH CURVES AND SOUNDINGS IN FEET-DATUM IS LOW WATER 242.8 FEET

THIS MAP COMPLIES WITH NATIONAL MAP ACCURACY STANDARDS  
FOR SALE BY U. S. GEOLOGICAL SURVEY, RESTON, VIRGINIA 22092  
A FOLDER DESCRIBING TOPOGRAPHIC MAPS AND SYMBOLS IS AVAILABLE ON REQUEST

Primary highway  
hard surface  
Secondary highway  
hard surface  
Interstate Route  
U. S. Route  
State Route

Light-duty road, hard or  
improved surface  
Unimproved road  
State Route

USGS  
Historical File  
Topographic Division  
1971  
AMS 5470 II NE-SERIES 9821

ROCHESTER EAST, N. Y.

N4307.5-W7730/7.5

JAN 9 1975

7600