

77° 37' 30"

43° 15'

43° 15'

43° 15'

43° 15'

43° 15'

43° 15'

43° 15'

43° 15'

43° 15'

43° 15'

43° 15'

43° 15'

43° 15'

43° 15'

43° 15'

43° 15'

43° 15'

43° 15'

43° 15'

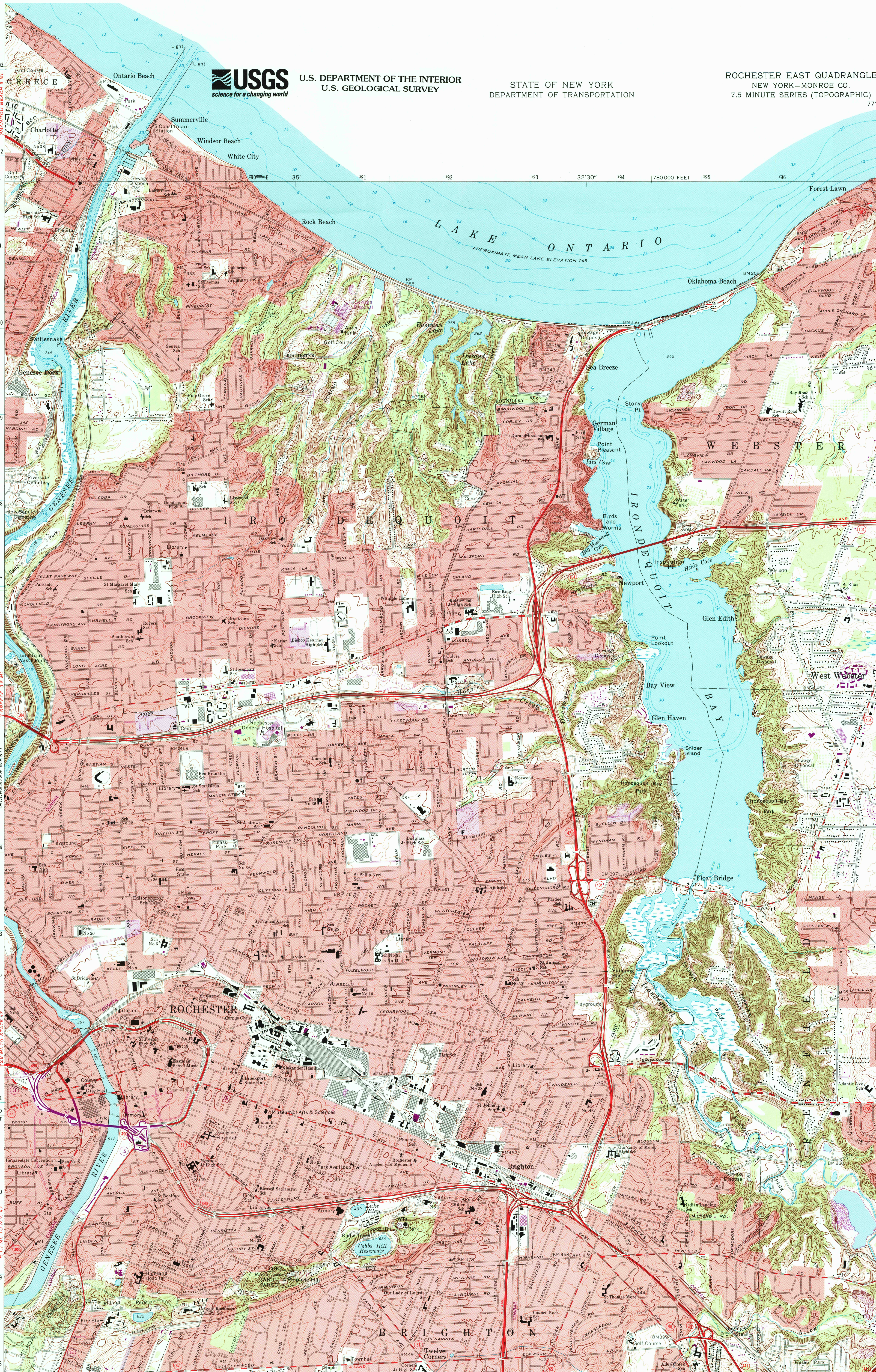
43° 15'

43° 15'

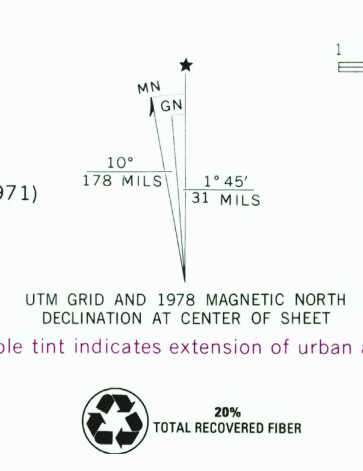
43° 15'

43° 15'

43° 15'



Mapped, edited, and published by the Geological Survey
Control by USGS, USC&GS, and New York Geodetic Survey
Topography by photogrammetric methods from aerial
photographs taken 1971. Field checked 1971
Supersedes map dated 1952
Selected hydrographic data compiled from U. S. Lake Charts 23 and 238 (1971)
This information is not intended for navigational purposes
Projection and 10,000-foot grid ticks: New York coordinate
system, west zone (transverse Mercator)
1000-meter Universal Transverse Mercator grid ticks,
zone 18, shown in blue. 1927 North American datum
Red tint indicates areas in which only landmark buildings are shown
Revisions shown in purple and woodland compiled from
aerial photographs taken 1976 and other source data.
This information not field checked. Map edited 1978



SCALE 1:24,000
CONTOUR INTERVAL 5 FEET
NATIONAL GEODETIC VERTICAL DATUM OF 1929
DEPTH CURVES AND SOUNDINGS IN FEET—DATUM IS LOW WATER 242.8 FEET
THIS MAP COMPLIES WITH NATIONAL MAP ACCURACY STANDARDS
FOR SALE BY U. S. GEOLOGICAL SURVEY, RESTON, VIRGINIA 22092
A FOLDER DESCRIBING TOPOGRAPHIC MAPS AND SYMBOLS IS AVAILABLE ON REQUEST

ROAD CLASSIFICATION
Primary highway
hard surface
Secondary highway
hard surface
Unimproved road
Interstate Route
U. S. Route
State Route
Light-duty road, hard or
improved surface
Unimproved road
Interstate Route
U. S. Route
State Route
RECEIVED ROCHESTER EAST, N. Y.
OCT 3 1 2001
N4307.5—W7730/7.5
1971
PHOTOREVISED 1978
AMS 5470 II NE—SERIES V821

