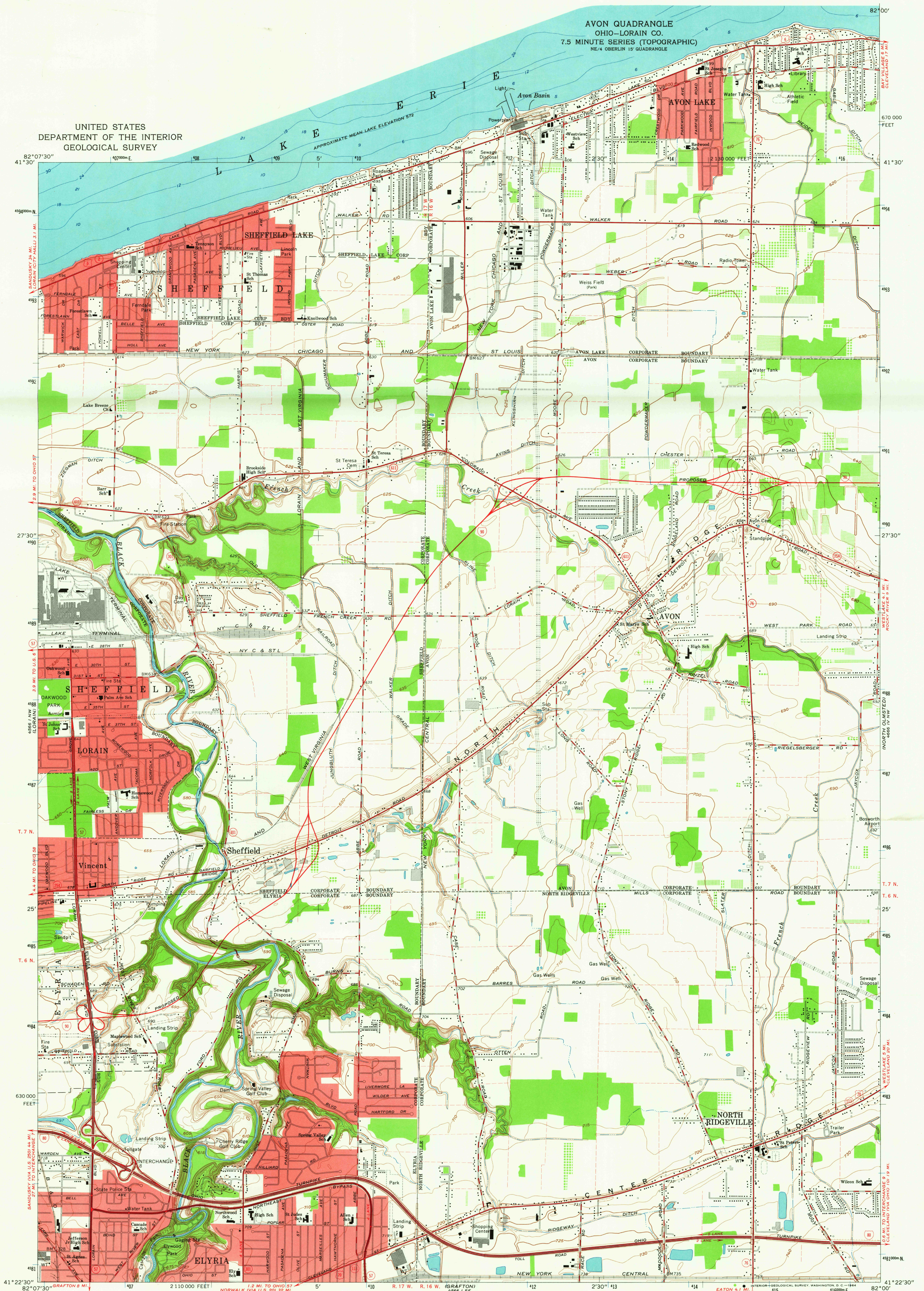
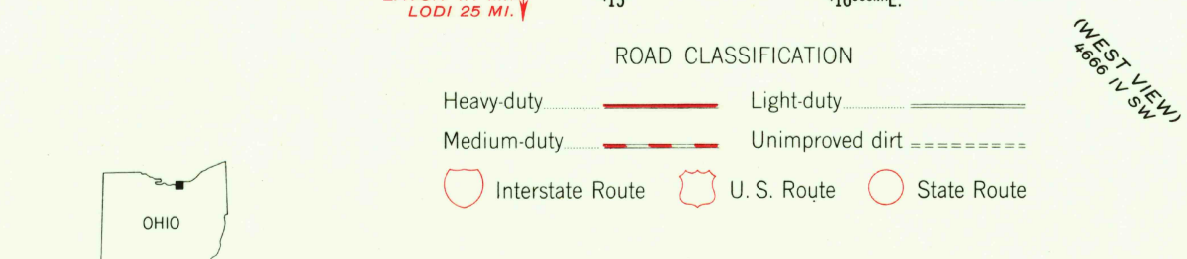
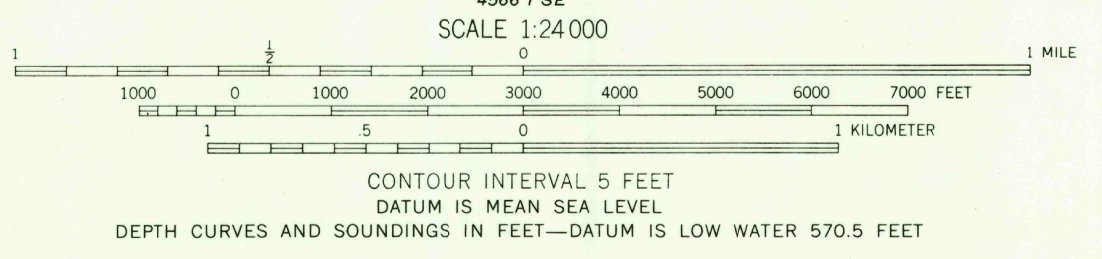


UNITED STATES  
DEPARTMENT OF THE INTERIOR  
GEOLOGICAL SURVEY

AVON QUADRANGLE  
OHIO—LORAIN CO.  
7.5 MINUTE SERIES (TOPOGRAPHIC)  
NE 1/4 OBERLIN 15' QUADRANGLE



Maped, edited, and published by the Geological Survey  
Revised in cooperation with State of Ohio agencies  
Control by USGS and USC&GS  
Planimetry by photogrammetric methods from aerial photographs  
taken 1952. Topography by planetable surveys 1953. Revised  
from aerial photographs taken 1962. Field checked 1963  
Selected hydrographic data compiled from U.S. Lake Survey Chart  
35 (1959). This information is not intended for navigational purposes  
Polyconic projection. 1927 North American datum  
10,000-foot grid based on Ohio coordinate system, north zone  
1000-meter Universal Transverse Mercator grid ticks,  
zone 17, shown in blue  
Fine red dashed lines indicate selected fence and field lines where  
generally visible on aerial photographs. This information is unchecked  
Red tint indicates areas in which only landmark buildings are shown  
Entire area lies within the Connecticut Western Reserve. Land lines  
established by private subdivision of the Connecticut Western Reserve



USGS  
Historical File  
Topographic Division  
AVON, OHIO  
NE 1/4 OBERLIN 15' QUADRANGLE  
N4122.5—W8200.7.5  
1963  
AMS 4566 1 NE—SERIES V852

OCT 20 1964  
3570