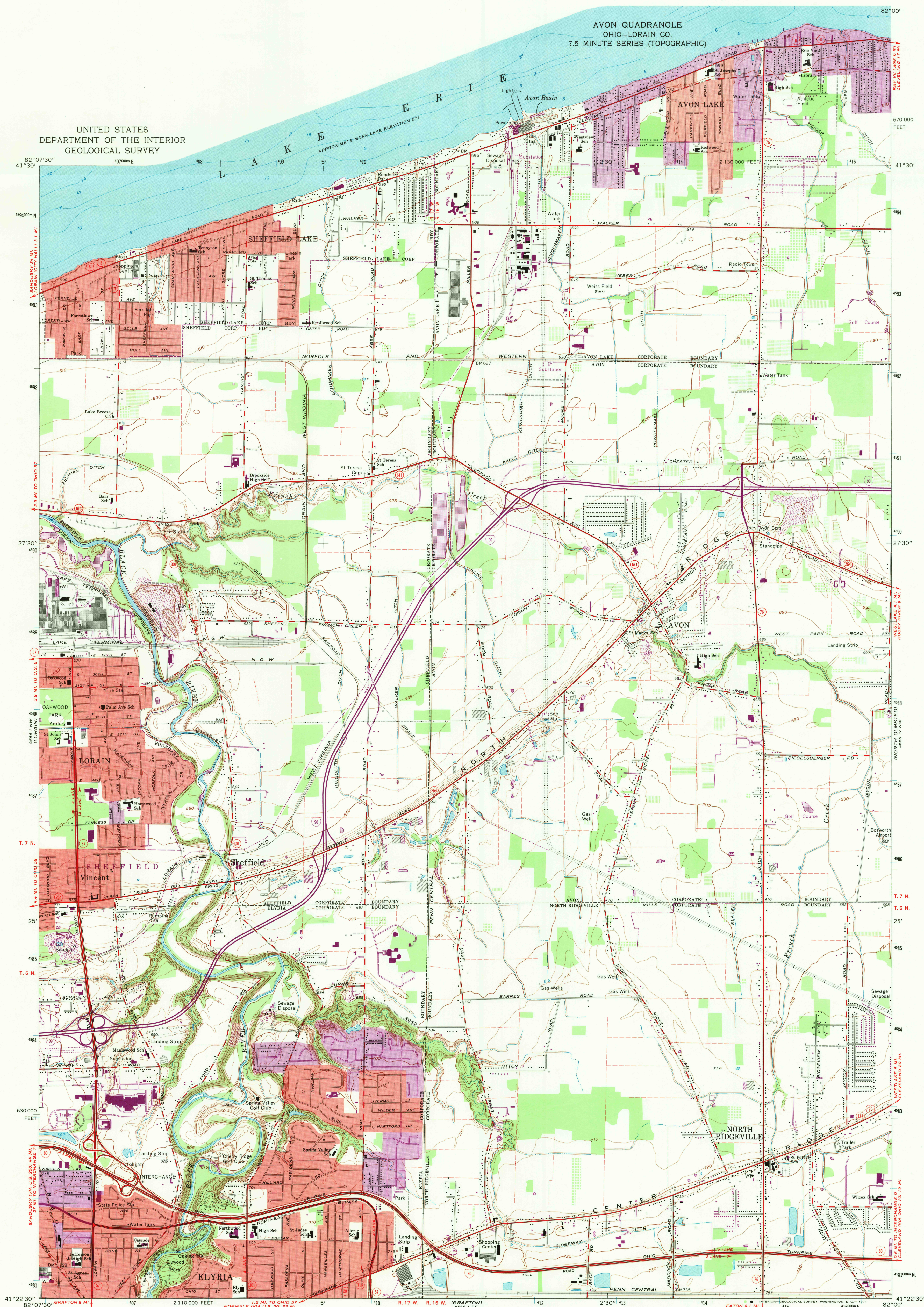


UNITED STATES
DEPARTMENT OF THE INTERIOR
GEOLOGICAL SURVEY

AVON QUADRANGLE
OHIO—LORAIN CO.
7.5 MINUTE SERIES (TOPOGRAPHIC)



Maped, edited, and published by the Geological Survey
Revised in cooperation with State of Ohio agencies
Control by USGS and USC&GS
Planimetry by photogrammetric methods from aerial photographs
taken 1952. Topography by plane-table surveys 1953. Revised
from aerial photographs taken 1962. Field checked 1963
Selected hydrographic data compiled from U. S. Lake Survey Chart
35 (1959). This information is not intended for navigational purposes
Polyconic projection. 1927 North American datum.
10,000-foot grid based on Ohio coordinate system, north zone
1000-meter Universal Transverse Mercator grid ticks,
zone 17, shown in blue
Fine red dashed lines indicate selected fence and field lines where
generally visible on aerial photographs. This information is unchecked
Red tint indicates areas in which only landmark buildings are shown
Entire area lies within the Connecticut Western Reserve. Land lines
established by private subdivision of the Connecticut Western Reserve

UTM GRID AND 1970 MAGNETIC NORTH
DECLINATION AT CENTER OF SHEET

36° 62' MILS
0° 42' 12 MILS

SCALE 1:24,000

CONTOUR INTERVAL 5 FEET
DATUM IS MEAN SEA LEVEL

DEPTH CURVES AND SOUNDINGS IN FEET—DATUM IS LOW WATER 570.5 FEET

THIS MAP COMPLIES WITH NATIONAL MAP ACCURACY STANDARDS.
FOR SALE BY U. S. GEOLOGICAL SURVEY, WASHINGTON, D. C. 20542
A FOLDER DESCRIBING TOPOGRAPHIC MAPS AND SYMBOLS IS AVAILABLE ON REQUEST

USGS
Historical File
Topographic Division

ROAD CLASSIFICATION

Heavy-duty ——— Light-duty ———
Medium-duty ——— Unimproved dirt ———
Interstate Route ——— U. S. Route ——— State Route ———

AVON, OHIO

N4122.5—W8200/7.5

1963
PHOTOREVISED 1970
AMS 4566 I NE—SERIES V852

FILE COPY
TOPOGRAPHIC DIVISION
3255

JUL 27 1971